

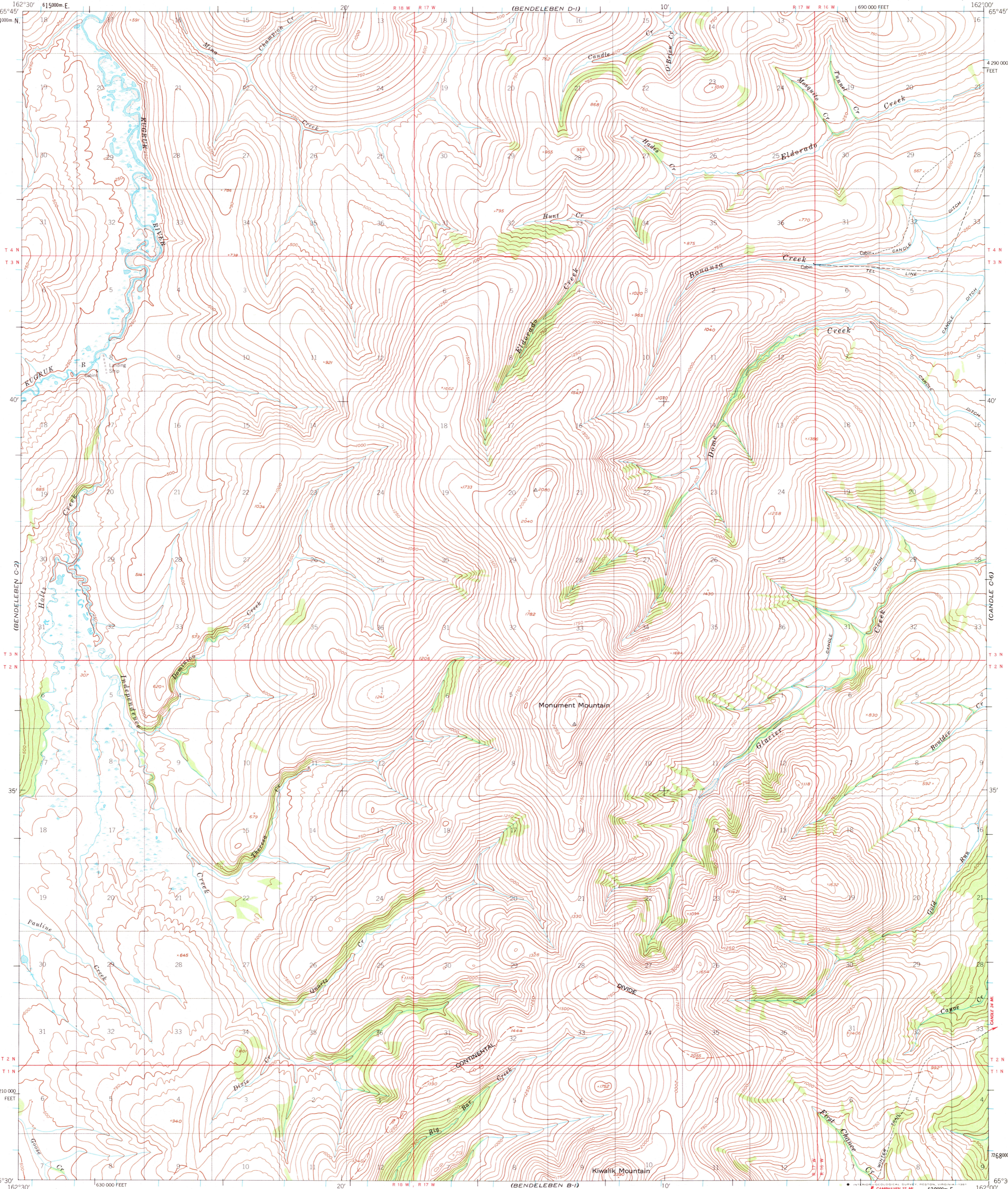
(BENDELEBEN D-2)

UNITED STATES
DEPARTMENT OF THE INTERIOR
GEOLOGICAL SURVEY

UNITED STATES
DEPARTMENT OF THE ARMY
CORPS OF ENGINEERS

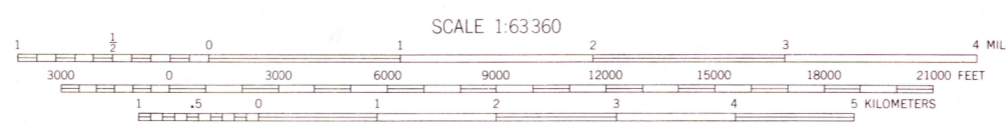
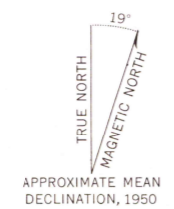
BENDELEBEN (C-1) QUADRANGLE
ALASKA
1:63 360 SERIES (TOPOGRAPHIC)

(CANDLE D-6)



(BENDELEBEN B-2)

Map by the Army Map Service
Published for civil use by the Geological Survey
Control by USGS, USC&GS, and USCE
Topography by photogrammetric methods from aerial photographs
taken 1950. Map not field checked
Universal Transverse Mercator projection, 1927 North American datum
10,000 foot grid based on Alaska coordinate system, zone 7
1000 meter Universal Transverse Mercator grid ticks,
zone 3, shown in blue
Gray land lines represent unsurveyed and unmarked locations
predetermined by the Bureau of Land Management
Folios K-6 and K-7, Kasiluk River Meridian
To place on the predicted North American Datum 1983 move
the projection lines 79 meters north and 127 meters east



CONTOUR INTERVAL 50 FEET
DASHED LINES REPRESENT 25-FOOT CONTOURS
NATIONAL GEODETIC VERTICAL DATUM OF 1929
FOR SALE BY U. S. GEOLOGICAL SURVEY
FAIRBANKS, ALASKA 99701, DENVER, COLORADO 80225, OR RESTON, VIRGINIA 22092
A FOLDER DESCRIBING TOPOGRAPHIC MAPS AND SYMBOLS IS AVAILABLE ON REQUEST



BENDELEBEN (C-1), ALASKA
N6530-W16200/15x30
1950
MINOR REVISIONS 1981

ROAD CLASSIFICATION
Trails

DEC 17 1981

1500