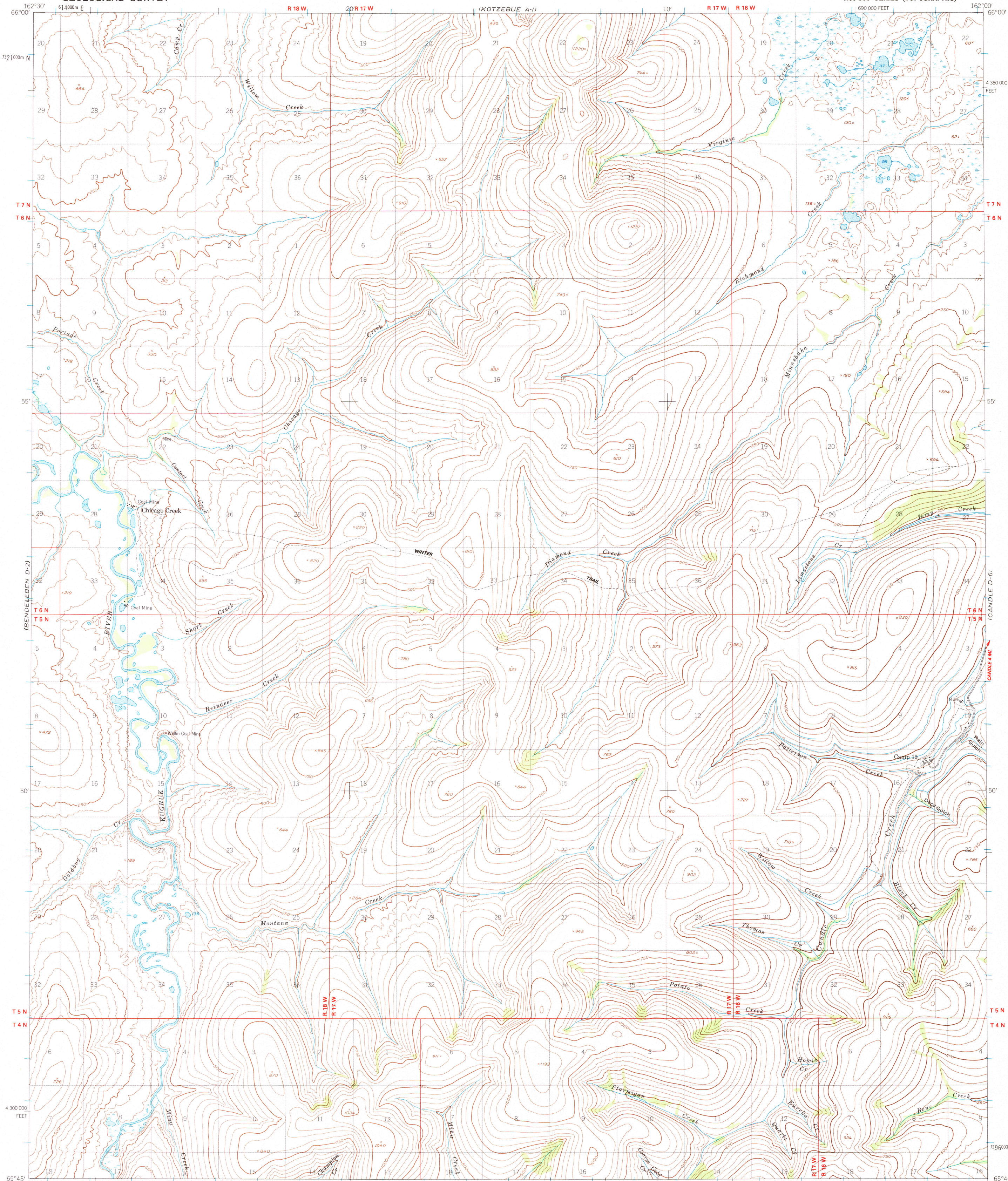
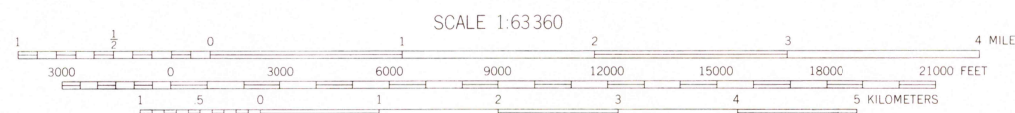


UNITED STATES  
DEPARTMENT OF THE INTERIOR  
GEOLOGICAL SURVEY

BENDELEBEN (D-1) QUADRANGLE  
ALASKA-NORTHWEST ARCTIC BOROUGH  
1:63 360 SERIES (TOPOGRAPHIC)



Mapped by the Defense Mapping Agency  
Edited and published by the Geological Survey  
Control by USGS, NOS/NOAA and USCE  
Topography by photogrammetric methods from aerial photographs  
taken 1950. Map not field checked  
Projection and 1000-meter grid ticks shown in blue:  
Universal Transverse Mercator, zone 3  
10,000-foot grid ticks based on Alaska coordinate  
system, zone 7, 1927 North American Datum  
To place on the predicted North American Datum 1983 move  
the projection lines 78 meters north and 126 meters east  
Gray land lines represent unsurveyed and unmarked locations  
predetermined by the Bureau of Land Management  
Folios K-6 and K-7, Katel River Meridian  
Swamps, as portrayed, indicate only the wetter areas,  
usually of low relief, as interpreted from aerial photographs



CONTOUR INTERVAL 50 FEET  
DASHED LINES REPRESENT 25-FOOT CONTOURS  
NATIONAL GEODETIC VERTICAL DATUM OF 1929

FOR SALE BY U. S. GEOLOGICAL SURVEY  
FAIRBANKS, ALASKA 99701, DENVER, COLORADO 80225, OR RESTON, VIRGINIA 22092  
A FOLDER DESCRIBING TOPOGRAPHIC MAPS AND SYMBOLS IS AVAILABLE ON REQUEST



ROAD CLASSIFICATION  
Light-duty

BENDELEBEN (D-1), ALASKA  
65162-G1-TF-063

1950  
MINOR REVISION 1988

USGS NMD HISTORICAL

APR 10 1988

REC'D FILE COPY