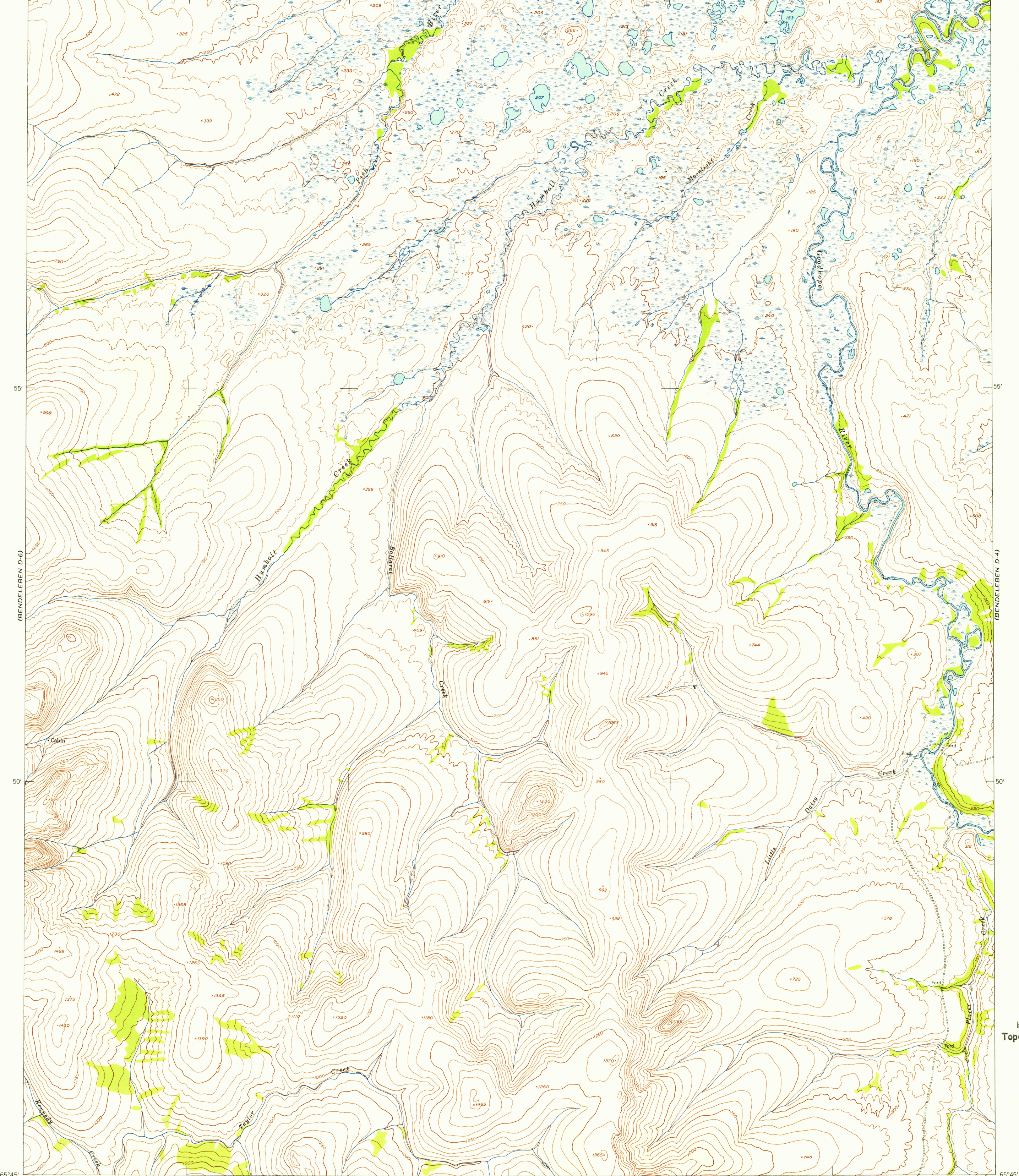


164°30' 25' 20' 15' (KOTZEBUE A-5) 10' 5' 164°00' 66°00'

U.S.G.S.  
FILE COPY  
TOPOGRAPHIC DIVISION



USGS  
Historical File  
Topographic Division

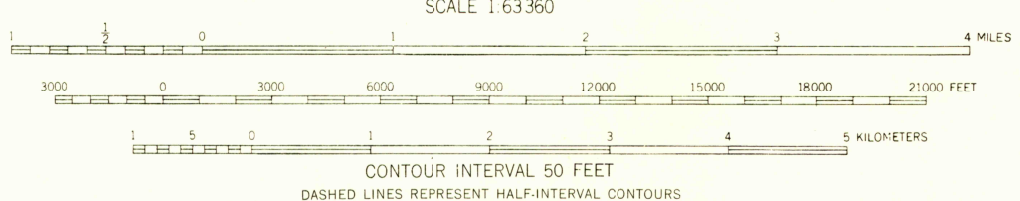
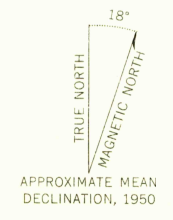
U.S.G.S.  
FILE COPY  
TOPOGRAPHIC DIVISION

HISTORICAL

65°45' 164°30' 25' 20' 15' (BENDELEBEN C-5) 10' 5' 164°00' 65°45' INTERIOR-GEOLOGICAL SURVEY WASHINGTON, D. C.—1956 RAINBOW CAMP AIRSTRIP 23 MI. M R-0618

(BENDELEBEN C-4)

Mapped by the Army Map Service  
Published for civil use by the Geological Survey  
Control by USGS, USC&GS, and USCE  
Topography from aerial photographs by photogrammetric methods  
Aerial photographs taken 1950. Map not field checked  
Universal Transverse Mercator projection, zone 3  
1927 North American datum  
Unchecked elevations are shown in brown



ROAD CLASSIFICATION

ALL WEATHER ROADS		DRY WEATHER ROADS	
Hard-surface	None	Improved dirt	None
Other	None	Unimproved dirt	None
		Trails	None

FOR SALE BY U. S. GEOLOGICAL SURVEY  
FAIRBANKS, ALASKA FEDERAL CENTER, DENVER, COLORADO WASHINGTON 25, D. C.  
A FOLDER DESCRIBING TOPOGRAPHIC MAPS AND SYMBOLS IS AVAILABLE ON REQUEST

BENDELEBEN (D-5), ALASKA  
N6545-W16400/15x30  
1950

JAN 13 1956  
2140