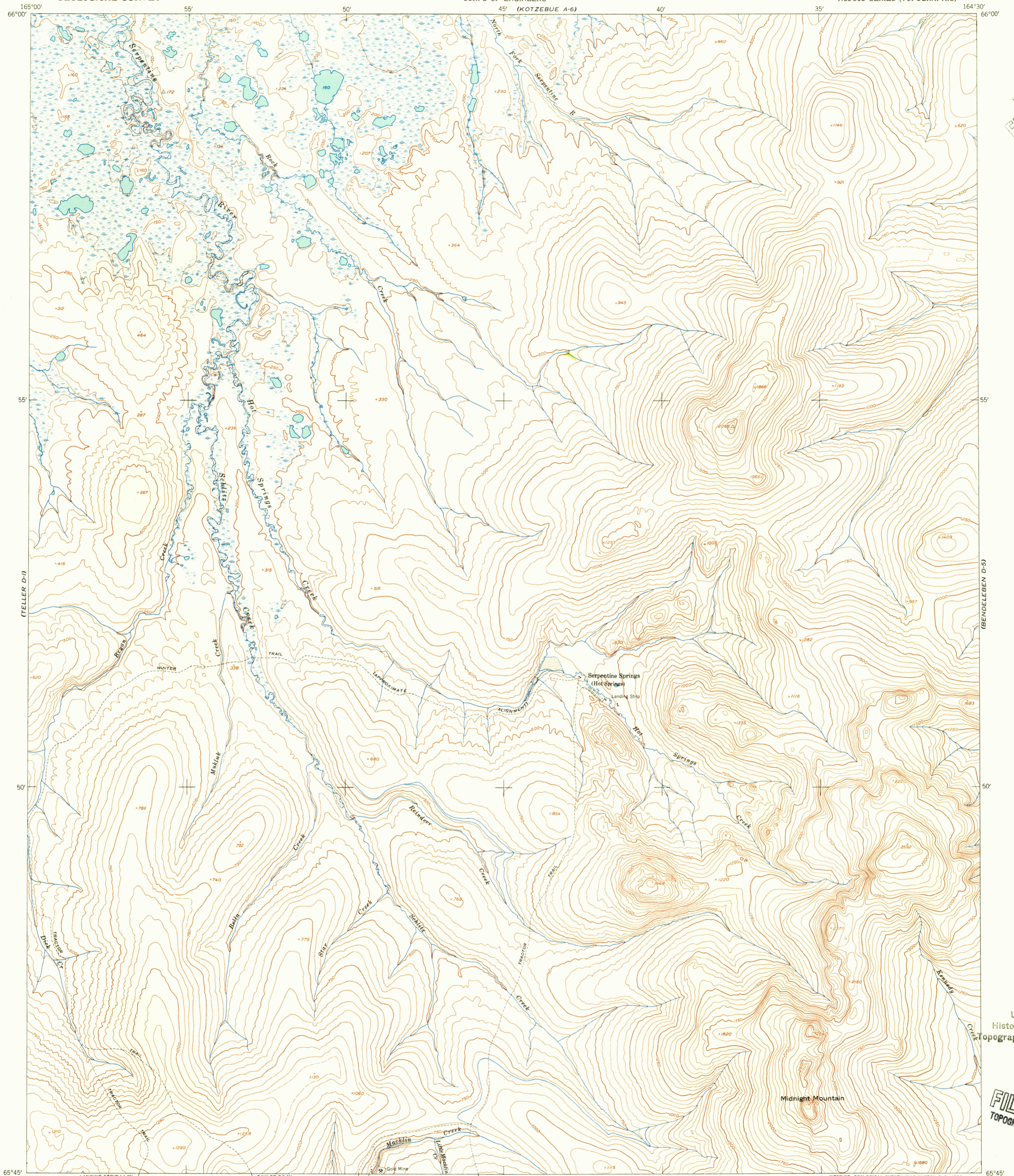


(SHUSHMAREF A-4)

(KOTZEBUE A-5)



U.S.G.S.
FILE COPY
TOPOGRAPHIC DIVISION

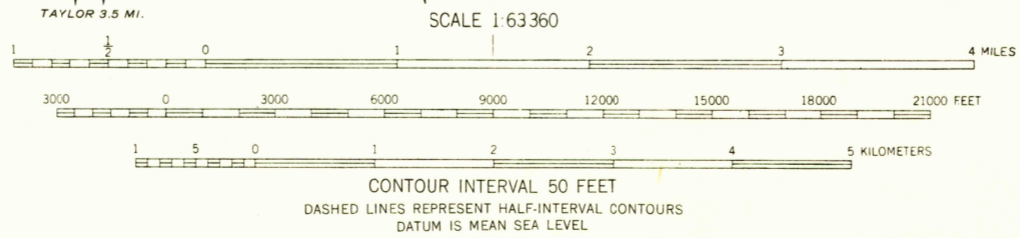
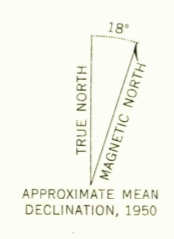
USGS
Historical File
Topographic Division

U.S.G.S.
FILE COPY
TOPOGRAPHIC DIVISION

HISTORICAL

(BENDELEBEN C-5)

Maped by the Army Map Service
Published for civil use by the Geological Survey
Control by USGS, USCG&S, and USCE
Topography from aerial photographs by photogrammetric methods
Aerial photographs taken 1950. Map not field checked
Universal Transverse Mercator projection, zone 3
1927 North American datum
Unchecked elevations are shown in brown



ROAD CLASSIFICATION

ALL WEATHER ROADS	DRY WEATHER ROADS
Hand-surfaced	None
Improved dirt	None
Other	None
Unimproved dirt	None
Trails	None

FOR SALE BY U. S. GEOLOGICAL SURVEY
FAIRBANKS, ALASKA FEDERAL CENTER, DENVER, COLORADO WASHINGTON 25, D. C.
A FOLDER DESCRIBING TOPOGRAPHIC MAPS AND SYMBOLS IS AVAILABLE ON REQUEST

BENDELEBEN (D-6), ALASKA
N6545-W16430/15x30
1950

JAN 13 1956