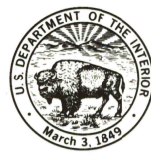


(GHISHMAREF A-1)

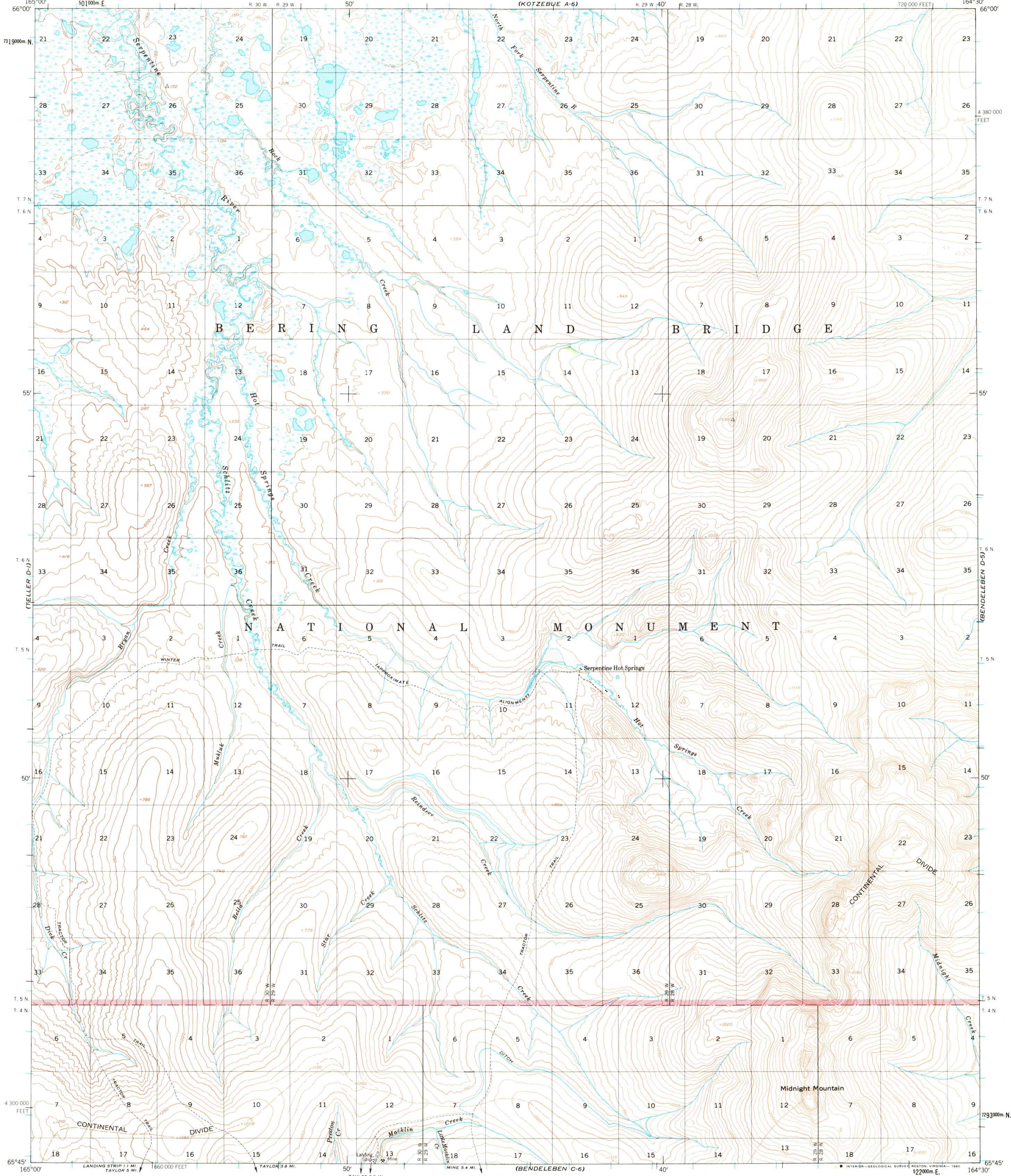
UNITED STATES  
DEPARTMENT OF THE INTERIOR  
GEOLOGICAL SURVEY



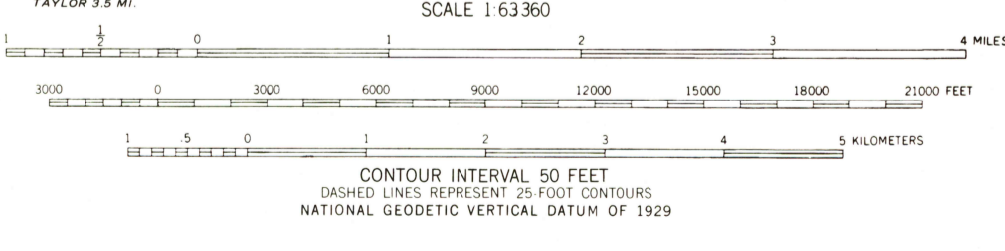
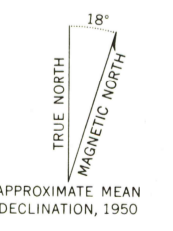
UNITED STATES  
DEPARTMENT OF THE ARMY  
CORPS OF ENGINEERS

BENDELEBEN (D-6) QUADRANGLE  
ALASKA  
1:63 360 SERIES (TOPOGRAPHIC)

(KOTZEBUE A-5)



Map by the Army Map Service  
Published for civil use by the Geological Survey  
Control by USGS, USC&GS, and USCE  
Topography by photogrammetric methods from aerial photographs  
taken 1950. Map not field checked  
Universal Transverse Mercator projection. 1927 North American datum  
10,000-foot grid based on Alaska coordinate system, zone 8  
1000 meter Universal Transverse Mercator grid ticks,  
zone 3, shown in blue  
Land lines represent unsurveyed and unmarked locations  
determined by the Bureau of Land Management  
Folio K. 6, Kateel River Meridian  
Swamps, as portrayed, indicate only the wetter areas,  
usually of low relief, as interpreted from aerial photographs  
There may be private inholdings within the boundaries of  
the Bering Land Bridge National Monument shown on this map



ROAD CLASSIFICATION  
Trails

FOR SALE BY U.S. GEOLOGICAL SURVEY  
FAIRBANKS, ALASKA 99701, DENVER, COLORADO 80225 OR RESTON, VIRGINIA 22092  
A FOLDER DESCRIBING TOPOGRAPHIC MAPS AND SYMBOLS IS AVAILABLE ON REQUEST

BENDELEBEN (D-6), ALASKA  
N6545-W16430/15x30  
1950  
MINOR REVISIONS 1978  
USGS  
Historical File  
Topographic Division  
2900  
MAY - 5 1980