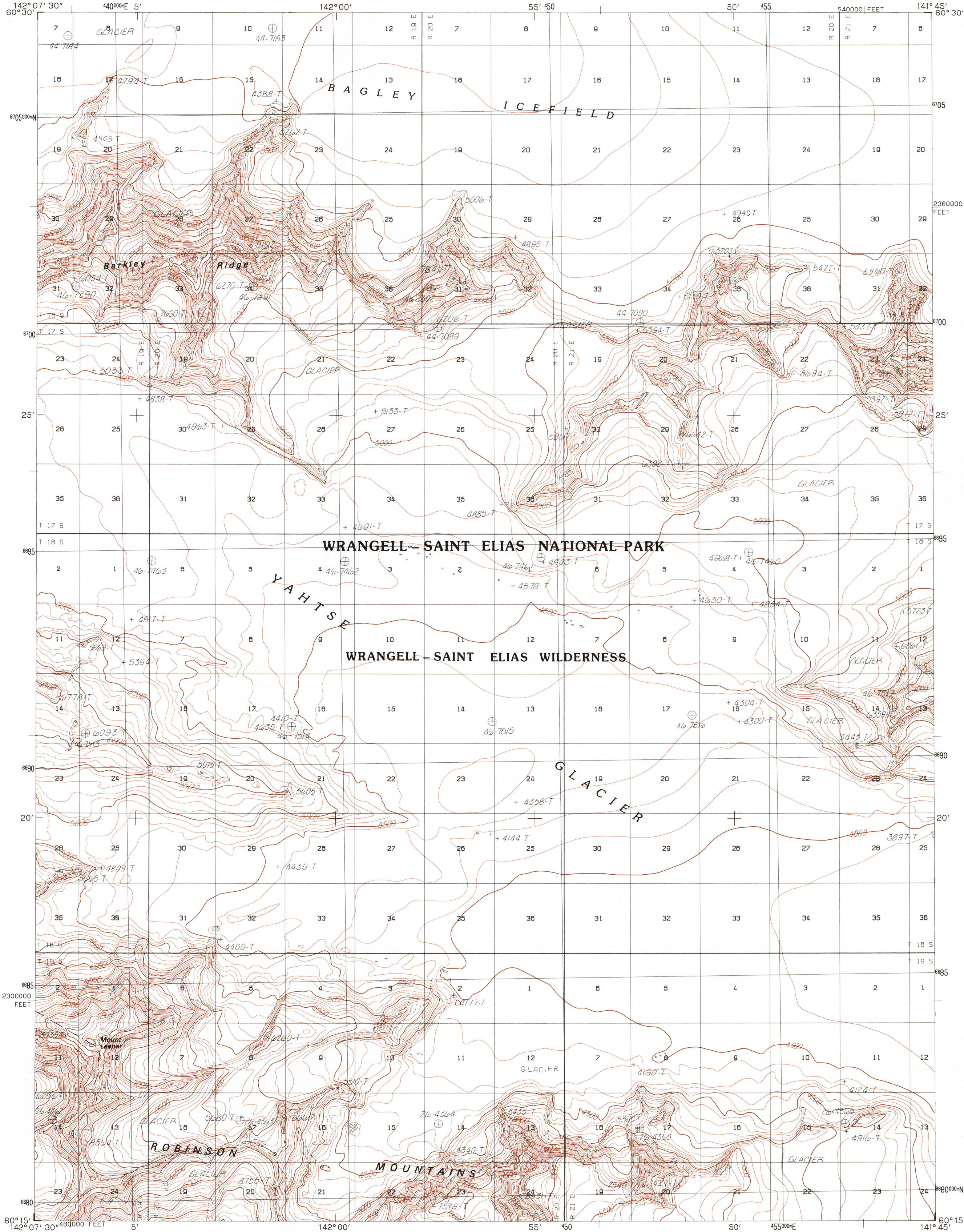


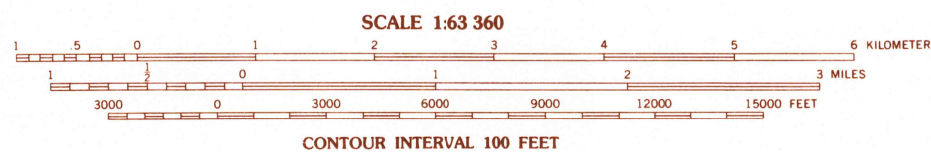
UNITED STATES
DEPARTMENT OF THE INTERIOR
GEOLOGICAL SURVEY

BERING GLACIER (B-3) QUADRANGLE
ALASKA
1:63 360 SERIES (TOPOGRAPHIC)



PRODUCED BY THE UNITED STATES GEOLOGICAL SURVEY
CONTROL BY USGS, NOS NOAA
COMPILED FROM AERIAL PHOTOGRAPHS TAKEN 1972 AND 1973
MAP NOT FIELD CHECKED. MAP EDITED 1985
PROJECTION UNIVERSAL TRANSVERSE MERCATOR
GRID 5000-METER UNIVERSAL TRANSVERSE MERCATOR ZONE 7
20,000-FOOT STATE GRID TICS ALASKA, ZONE 2
UTM GRID DECLINATION 0°49' EAST
1985 MAGNETIC NORTH DECLINATION 27°30' EAST
VERTICAL DATUM NATIONAL GEODETIC VERTICAL DATUM OF 1929
HORIZONTAL DATUM 1927 NORTH AMERICAN DATUM
To place on the predicted North American Datum of 1983, move the
projection lines 46 meters north and 107 meters east.
Land lines represent unsurveyed and unmarked locations predeter-
mined by the Bureau of Land Management, Folios CR-7 and CR-9,
Copper River Meridian.
There may be private inholdings within the boundaries of any Federal
and State reservations shown on this map.
Federal reservations boundaries established by the Alaska National
Interest Lands Conservation Act, PL 96-487, Dec. 2, 1980, are
shown as compiled by the administering agencies.
All streams and lakes are perennial.

PROVISIONAL MAP
Produced from original
manuscript drawings. Infor-
mation shown as of date of
photography 3



INTERIOR-GEOLOGICAL SURVEY, RESTON, VIRGINIA: 1985

ROAD LEGEND
No roads or trails in this area

1	2	3	1 Bering Glacier (C-4)
2	3	4	2 Bering Glacier (C-3)
3	4	5	3 Bering Glacier (C-2)
4	5	6	4 Bering Glacier (B-4)
5	6	7	5 Bering Glacier (B-3)
6	7	8	6 Bering Glacier (B-2)
7	8	9	7 Bering Glacier (A-3)
8	9	10	8 Bering Glacier (A-2)

ADJOINING QUADRANGLE NAMES

BERING GLACIER (B-3), ALASKA
PROVISIONAL EDITION 1985

N6015-W14145/15X22.5

FOR SALE BY U.S. GEOLOGICAL SURVEY, FAIRBANKS, ALASKA 99701
DENVER COLORADO 80225, OR RESTON, VIRGINIA 22092

RETURN TO:
USGS AND HISTORICAL MAP ARCHIVES