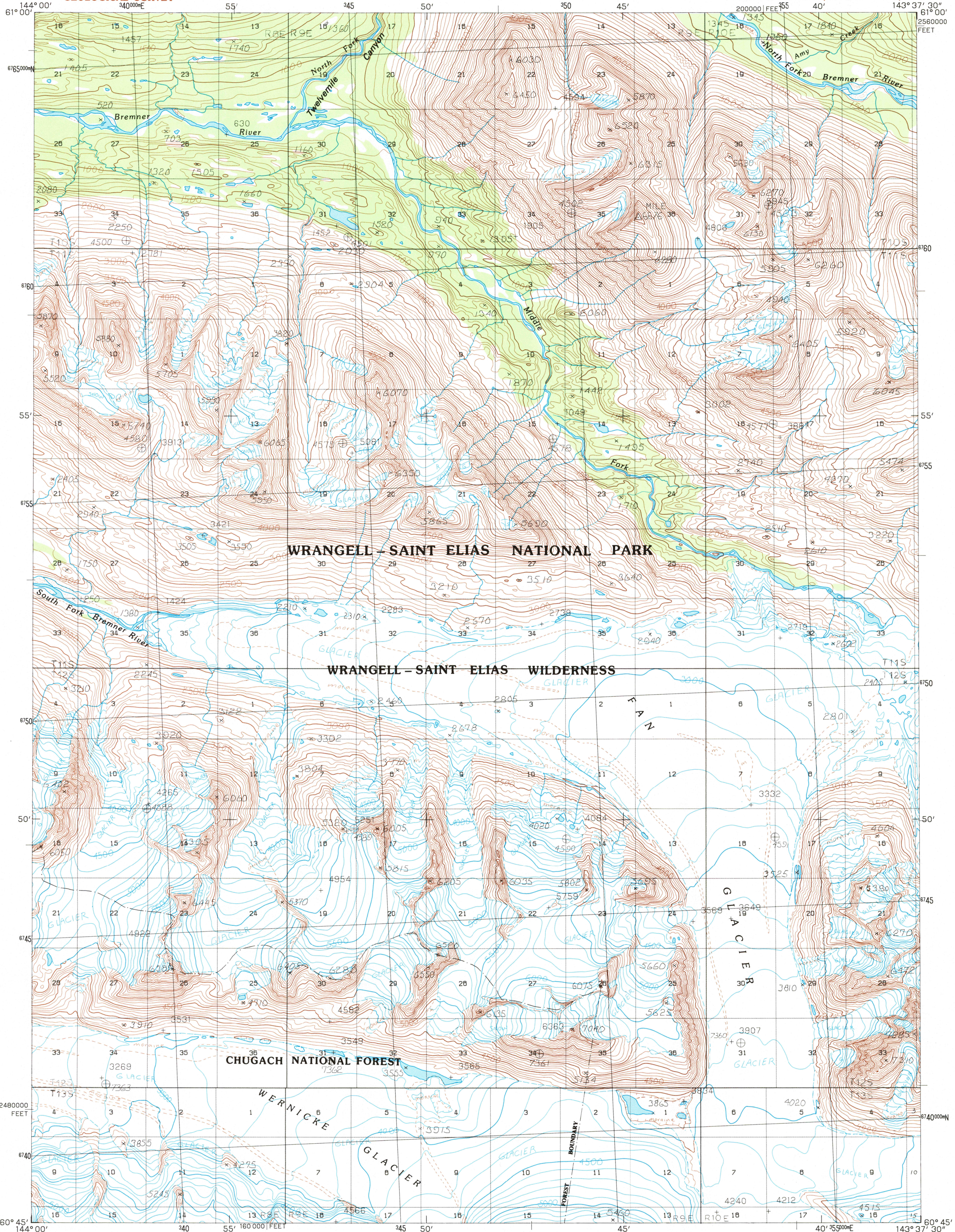


UNITED STATES  
DEPARTMENT OF THE INTERIOR  
GEOLOGICAL SURVEY

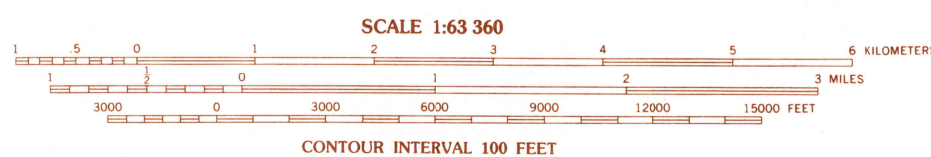
BERING GLACIER (D-8) QUADRANGLE  
ALASKA

1:63 360 SERIES (TOPOGRAPHIC)



PRODUCED BY THE UNITED STATES GEOLOGICAL SURVEY  
CONTROL BY ..... USGS, NOS/NOAA  
COMPILED FROM AERIAL PHOTOGRAPHS TAKEN ..... 1972  
MAP NOT FIELD CHECKED ..... MAP EDITED ..... 1984  
PROJECTION ..... UNIVERSAL TRANSVERSE MERCATOR  
GRID: 5 000-METER UNIVERSAL TRANSVERSE MERCATOR ..... ZONE 7  
20 000-FOOT STATE GRID TICKS ..... ALASKA, ZONE 2  
UTM GRID DECLINATION ..... 227 WEST  
1984 MAGNETIC NORTH DECLINATION ..... 28 EAST  
VERTICAL DATUM ..... NATIONAL GEODETIC VERTICAL DATUM OF 1929  
HORIZONTAL DATUM ..... 1927 NORTH AMERICAN DATUM  
To place on the predicted North American Datum of 1983, move the  
projection lines 53 meters north and 111 meters east.  
Land lines represent unsurveyed and unmarked locations prede-  
termined by the Bureau of Land Management, Folio CR-6, Copper River  
Meridian  
There may be private inholdings within the boundaries of any Federal  
and State Reservations shown on this map  
Federal reservation boundaries established by the Alaska National  
Interest Lands Conservation Act, PL 96-487, Dec. 2, 1980, are shown  
as compiled by the administering agencies

**PROVISIONAL MAP**  
Produced from original  
manuscript drawings. Infor-  
mation shown as of date of  
photography 2



ROAD LEGEND  
No roads or trails in this area

1	2	3	1 Valdez (A-1)
4	5	6	2 Mc Carthy (A-8)
7	8	9	3 Mc Carthy (A-7)
10	11	12	4 Cordova (D-1)
13	14	15	5 Bering Glacier (D-7)
16	17	18	6 Cordova (C-1)
19	20	21	7 Bering Glacier (C-8)
22	23	24	8 Bering Glacier (C-7)

BERING GLACIER (D-8), ALASKA  
PROVISIONAL EDITION 1984  
60143-G6-TF-063

FOR SALE BY U.S. GEOLOGICAL SURVEY, FAIRBANKS, ALASKA 99701  
DENVER COLORADO 80225, OR RESTON, VIRGINIA 22092

