

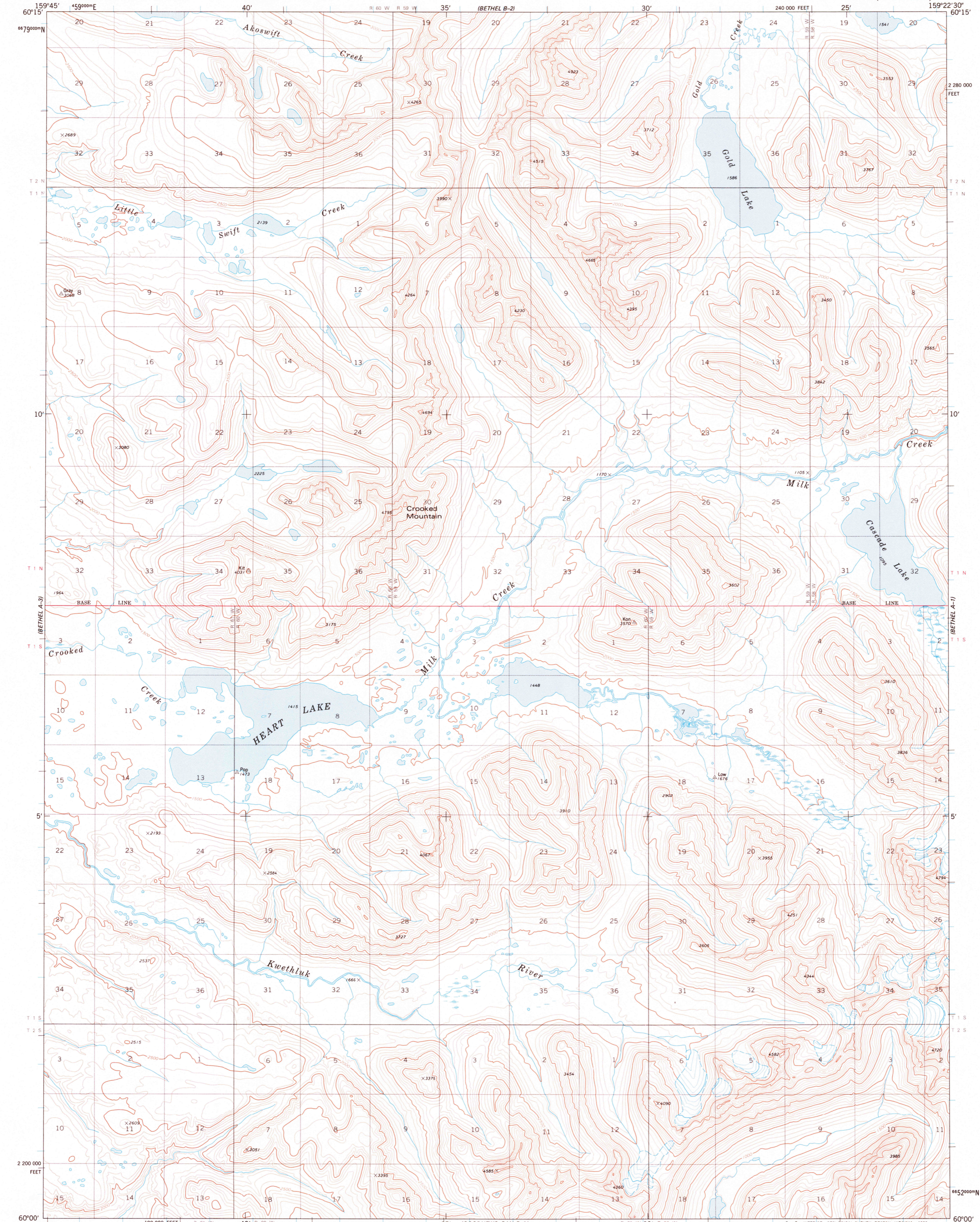
UNITED STATES  
DEPARTMENT OF THE INTERIOR  
GEOLOGICAL SURVEY



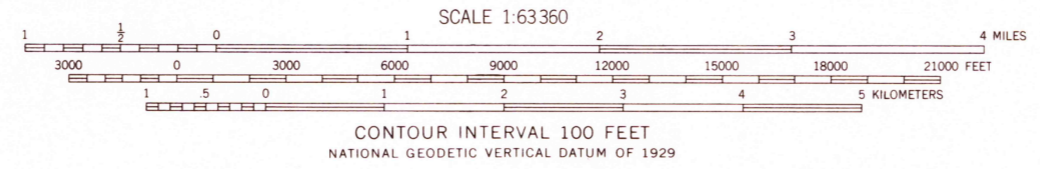
BETHEL (A-2) QUADRANGLE

ALASKA

1:63 360 SERIES (TOPOGRAPHIC)



Mapped, edited, and published by the Geological Survey  
Control by USGS, NOS/NOAA, and USCE  
Topography by photogrammetric methods from aerial photographs  
taken 1973. Field annotated 1976. Map not field checked  
Map edited 1979  
Projection and 1000-meter grid ticks: Universal  
Transverse Mercator, Zone 4  
10,000-foot grid ticks based on Alaska coordinate  
system, zone 6. 1927 North American datum  
Gray land lines represent unsurveyed and unmarked locations  
pre-determined by the Bureau of Land Management  
Folios S-10 and S-19, Seward Meridian  
Swamps as portrayed, indicate only the wetter areas,  
usually of low relief, as interpreted from aerial photographs



ROAD CLASSIFICATION  
No roads or trails in this area

FOR SALE BY U.S. GEOLOGICAL SURVEY  
FAIRBANKS, ALASKA 99701, DENVER, COLORADO 80225 OR RESTON, VIRGINIA 22092  
A FOLDER DESCRIBING TOPOGRAPHIC MAPS AND SYMBOLS IS AVAILABLE ON REQUEST

BETHEL (A-2), ALASKA  
N6000-W15922.5/15 X 22.5

SEP 18 1979

USGS  
Historical File  
Topographic Division

1979

2250