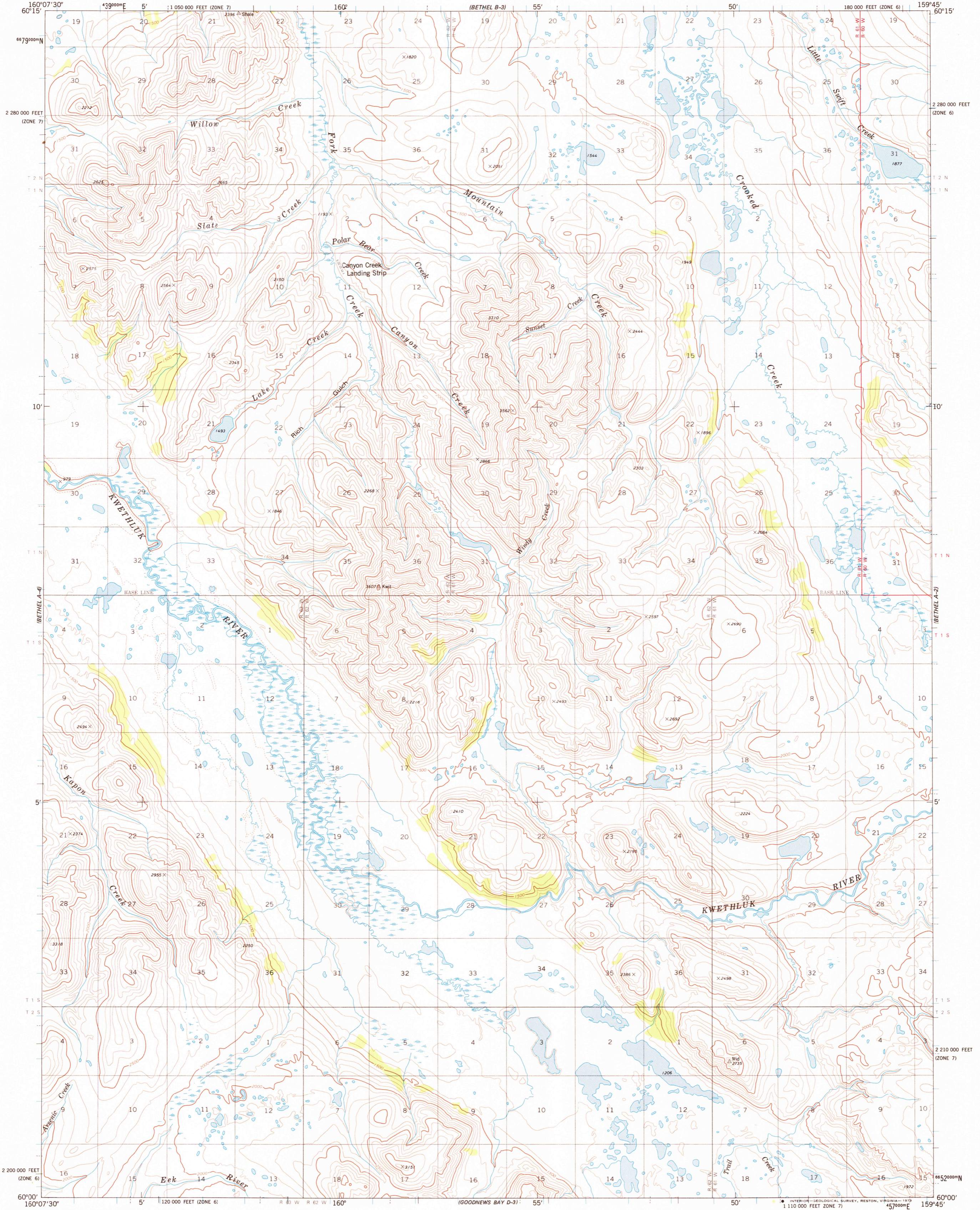


UNITED STATES
DEPARTMENT OF THE INTERIOR
GEOLOGICAL SURVEY



BETHEL (A-3) QUADRANGLE
ALASKA
1:63 360 SERIES (TOPOGRAPHIC)



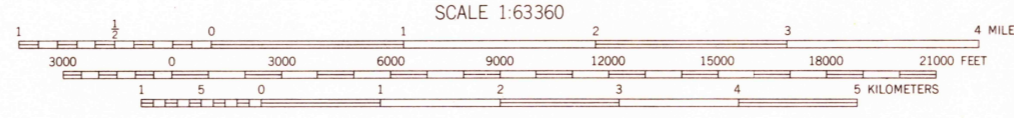
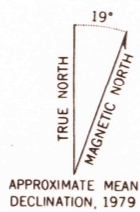
Mapped, edited, and published by the Geological Survey
Control by USGS, NOS/NOAA, and USCE

Topography by photogrammetric methods from aerial photographs
taken 1973. Field annotated 1976. Map not field checked.
Map edited 1979

Projection and 1000-meter grid ticks: Universal
Transverse Mercator, zone 4, shown in blue
10,000-foot grid ticks based on Alaska coordinate
system, zones 6 and 7. 1927 North American datum

Gray land lines represent unsurveyed and unmarked
locations predetermined by the Bureau of Land Management.
Folios S-10 and S-19, Seward Meridian

Swamps as portrayed, indicate only the wetter areas,
usually of low relief, as interpreted from aerial photographs



CONTOUR INTERVAL 100 FEET
DOTTED LINES REPRESENT 50-FOOT CONTOURS
NATIONAL GEODETIC VERTICAL DATUM OF 1929



ROAD CLASSIFICATION
No roads or trails in this area

FOR SALE BY U. S. GEOLOGICAL SURVEY
FAIRBANKS, ALASKA 99701, DENVER, COLORADO 80225, OR RESTON, VIRGINIA 22092
A FOLDER DESCRIBING TOPOGRAPHIC MAPS AND SYMBOLS IS AVAILABLE ON REQUEST

BETHEL (A-3), ALASKA
N6000-W15945/15 X 22.5
1979

USGS
Historical File
Topographic Division

NOV - 7 1979

2250