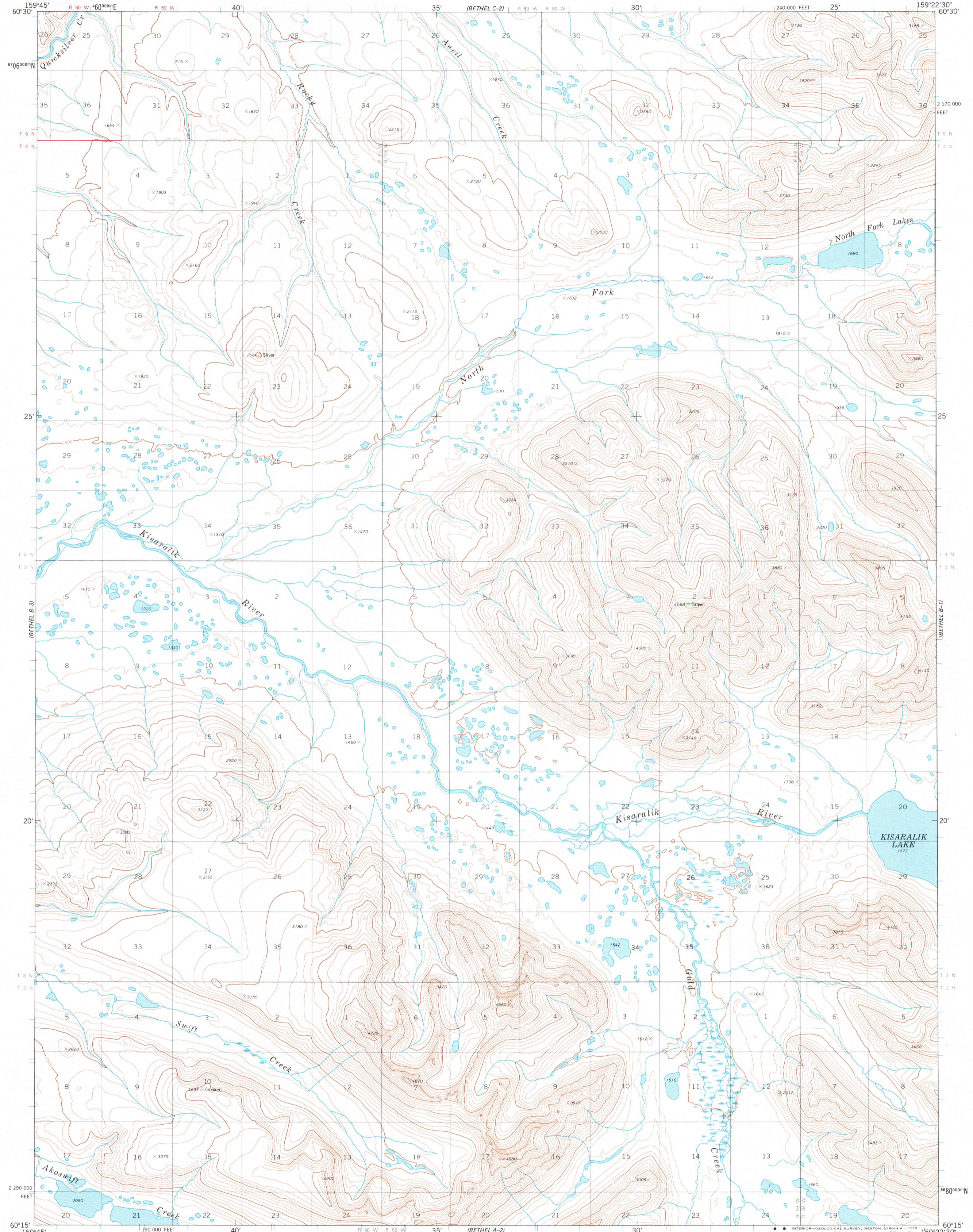


(BETHEL C-3)

UNITED STATES  
DEPARTMENT OF THE INTERIOR  
GEOLOGICAL SURVEY

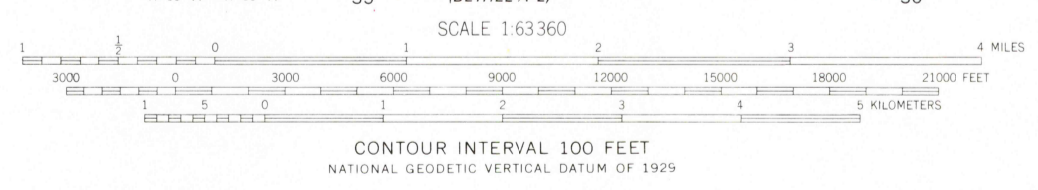
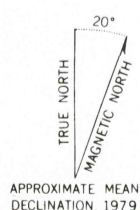
BETHEL (B-2) QUADRANGLE  
ALASKA  
1:63 360 SERIES (TOPOGRAPHIC)

(BETHEL C-1)



(BETHEL A-3)

Mapped, edited, and published by the Geological Survey  
Control by USGS, NOS/NOAA, and USCE  
Topography by photogrammetric methods from aerial photographs  
taken 1973. Field annotated 1976. Map not field checked.  
Map edited 1979  
Projection and 1000-meter grid ticks: Universal  
Transverse Mercator, zone 4, shown in blue  
10,000-foot grid ticks based on Alaska coordinate  
system, zone 6. 1927 North American datum  
Gray land lines represent unsurveyed and unmarked  
locations predetermined by the Bureau of Land Management.  
Folio S-10 Seward Meridian  
Swamps as portrayed, indicate only the wetter areas,  
usually of low relief, as interpreted from aerial photographs



FOR SALE BY U.S. GEOLOGICAL SURVEY  
FAIRBANKS, ALASKA 99701, DENVER, COLORADO 80225 OR RESTON, VIRGINIA 22092  
A FOLDER DESCRIBING TOPOGRAPHIC MAPS AND SYMBOLS IS AVAILABLE ON REQUEST

ROAD CLASSIFICATION  
No roads or trails in this area

BETHEL (B-2), ALASKA  
N6015-W15922.5/15 X 22.5  
1979

NOV 9 1981

RETURN TO:  
NHD HISTORICAL MAP ARCHIVES  
USGS NATIONAL CENTER, MS-522  
RESTON, VA 22092  
Sep. 18, 1979

5102