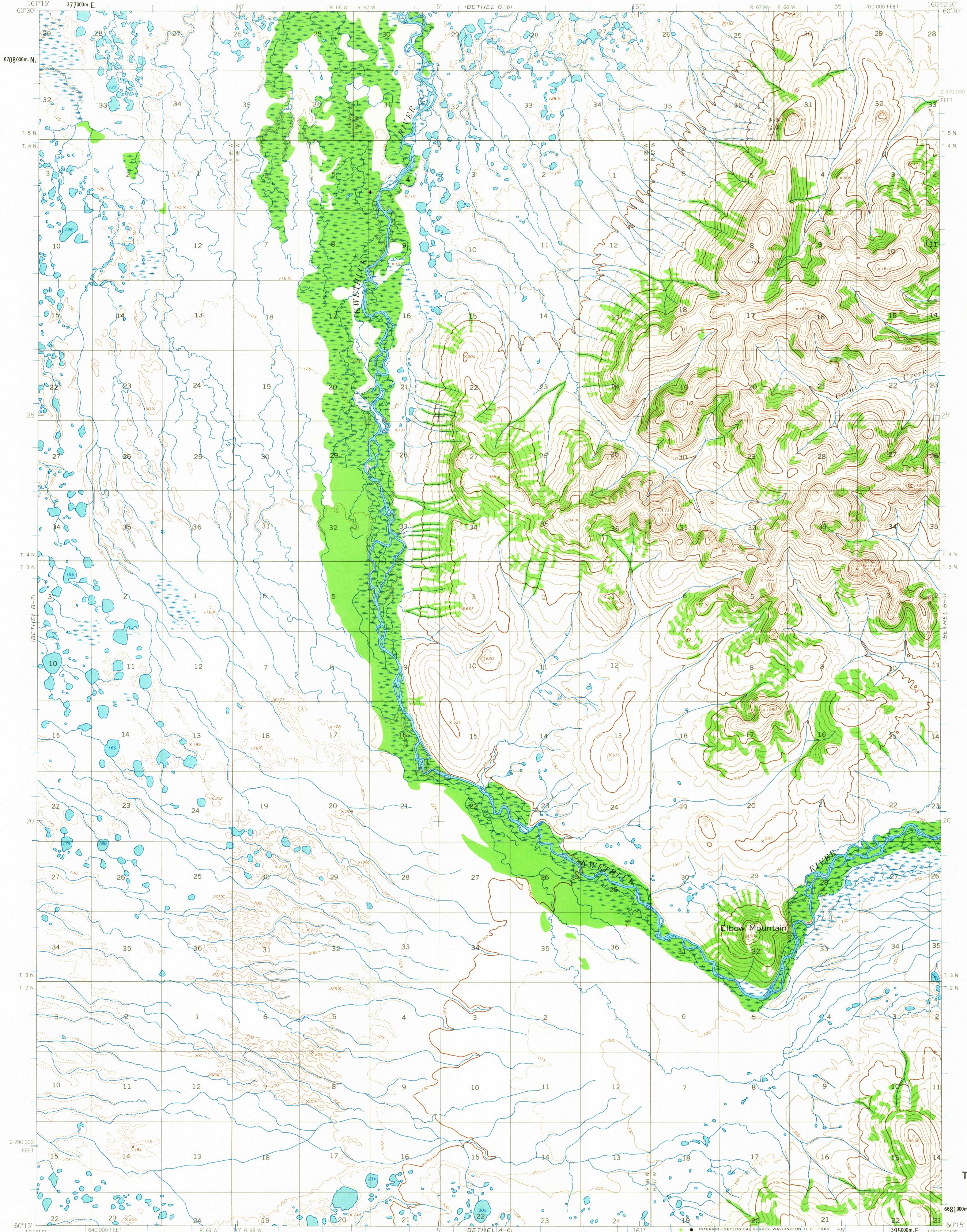


UNITED STATES
DEPARTMENT OF THE INTERIOR
GEOLOGICAL SURVEY

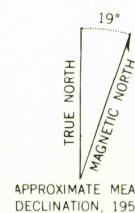
BETHEL (B-6) QUADRANGLE
ALASKA
1:63 360 SERIES (TOPOGRAPHIC)



Mapped by the Army Map Service
Edited and published by the Geological Survey
Control by USGS and USGS

Topography by photogrammetric methods from aerial photographs
taken 1957, field annotated 1954. Map not field checked.
Universal Transverse Mercator projection, 1927 North American datum
10 000 foot grid based on Alaska coordinate system, zone 7
1000 meter Universal Transverse Mercator grid ticks,
zone 4, shown in blue.

Land lines represent unsurveyed and unmarked locations
predetermined by the Bureau of Land Management
Folio S 9, Seward Meridian



CONTOUR INTERVAL 50 FEET
DOTTED LINES REPRESENT 25-FOOT CONTOURS
DATUM IS MEAN SEA LEVEL



ROAD CLASSIFICATION
No roads or trails in this area

FOR SALE BY U.S. GEOLOGICAL SURVEY
FAIRBANKS, ALASKA, DENVER 25, COLORADO OR WASHINGTON 25, D.C.
A FOLDER DESCRIBING TOPOGRAPHIC MAPS AND SYMBOLS IS AVAILABLE ON REQUEST

BETHEL (B-6), ALASKA
N6015-W16052.5/15X22.5

1954

USGS
Historical File
Topographic Division

MAR 17 1965

MAR 17 1965

1885 HISTORICAL

FILE COPY
TOPOGRAPHIC DIVISION