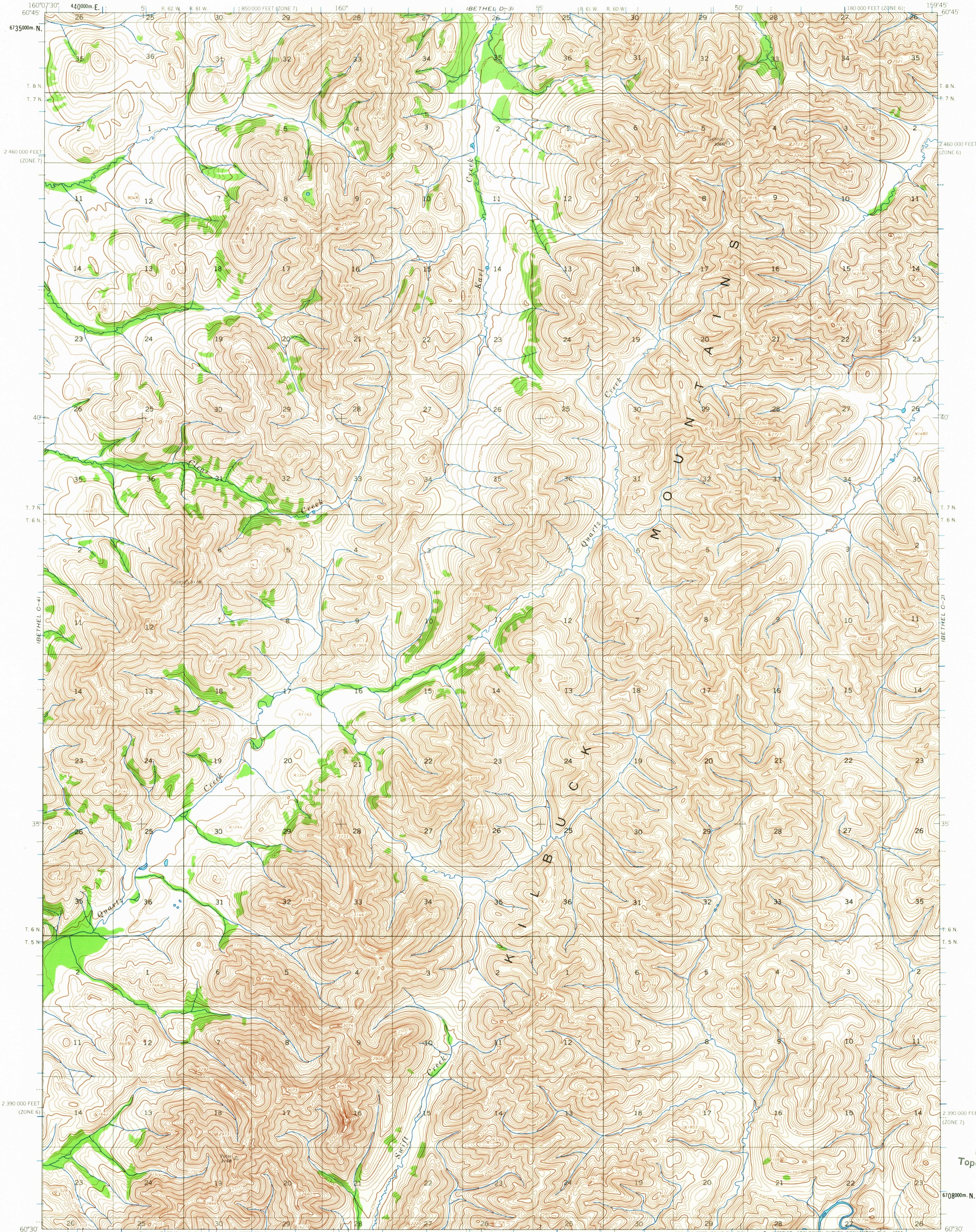
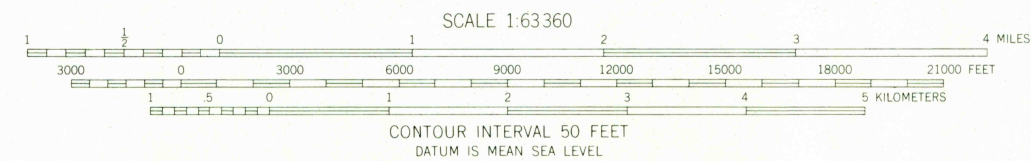
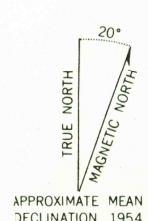


UNITED STATES  
DEPARTMENT OF THE INTERIOR  
GEOLOGICAL SURVEY

BETHEL (C-3) QUADRANGLE  
ALASKA  
1:63 360 SERIES (TOPOGRAPHIC)



Mapped by the Army Map Service  
Edited and published by the Geological Survey  
Control by USCGS and USCE  
Topography by photogrammetric methods from aerial photographs  
taken 1957, field annotated 1954. Map not field checked.  
Universal Transverse Mercator projection, 1927 North American datum  
10,000 foot grids based on Alaska coordinate system, zones 6 and 7  
1000 meter Universal Transverse Mercator grid ticks,  
zone 4, shown in blue  
Land lines represent unsurveyed and unmarked locations  
predetermined by the Bureau of Land Management  
Folio S-10, Seward Meridian



ROAD CLASSIFICATION  
No roads or trails in this area

FOR SALE BY U.S. GEOLOGICAL SURVEY  
FAIRBANKS, ALASKA, DENVER 25, COLORADO OR WASHINGTON 25, D. C.  
A FOLDER DESCRIBING TOPOGRAPHIC MAPS AND SYMBOLS IS AVAILABLE ON REQUEST

BETHEL (C-3), ALASKA  
N6303-W15945/15X22.5  
1954

USGS  
Historical File  
Topographic Division

MAR 17 1965

U.S.G.S. 2250  
FILE COPY  
TOPOGRAPHIC DIVISION  
HISTORICAL