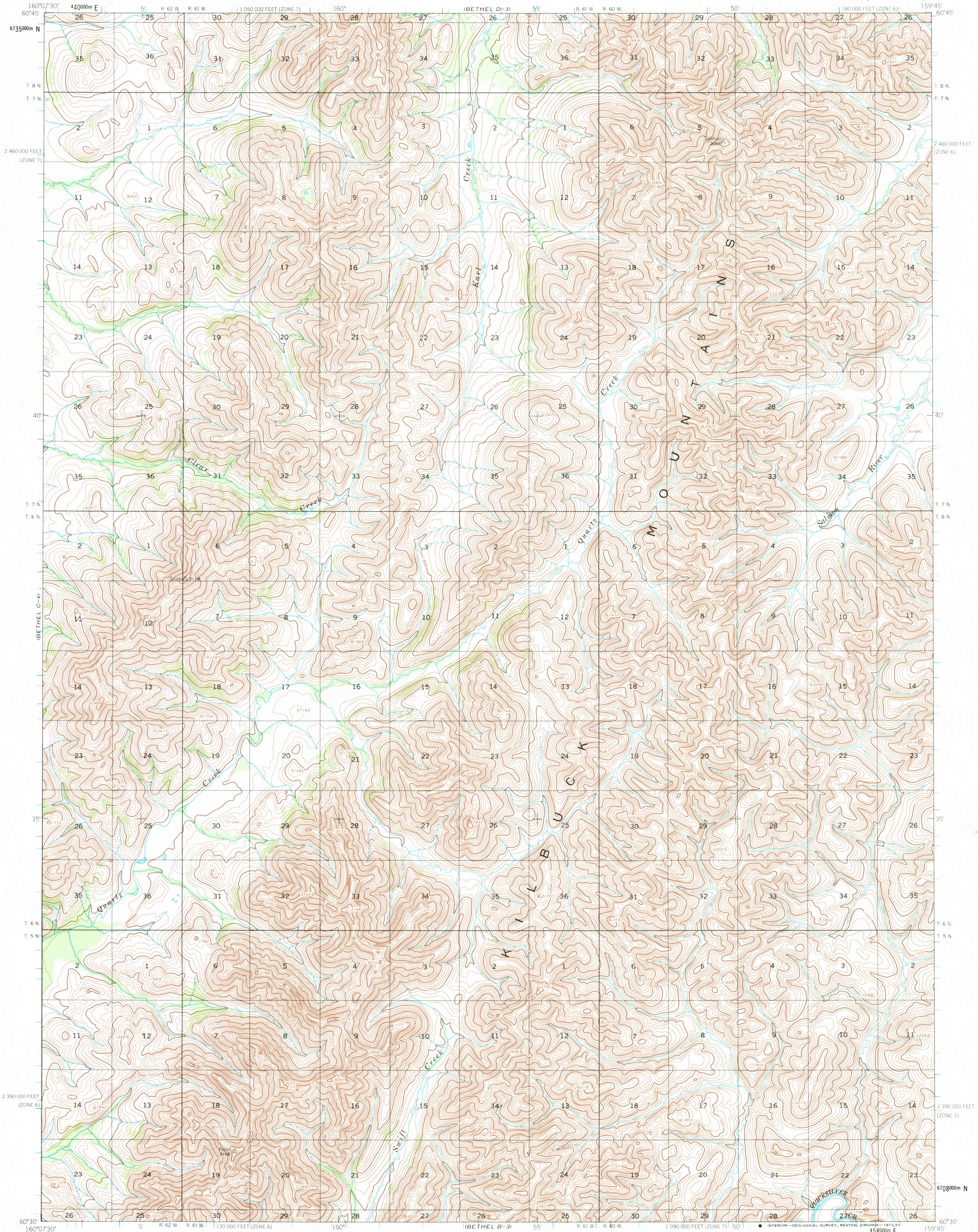


UNITED STATES
DEPARTMENT OF THE INTERIOR
GEOLOGICAL SURVEY

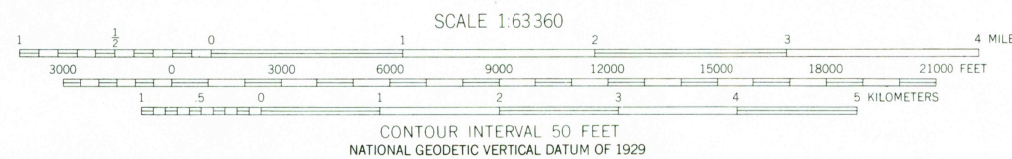
BETHEL (C-3) QUADRANGLE
ALASKA
1:63 360 SERIES (TOPOGRAPHIC)



Maped by the Army Map Service
Edited and published by the Geological Survey
Control by USCGS and USCE

Topography by photogrammetric methods from aerial photographs
taken 1957, field annotated 1954. Map not field checked.
Universal Transverse Mercator projection, 1927 North American datum
10,000 foot grids based on Alaska coordinate system, zones 6 and 7
1000 meter Universal Transverse Mercator grid ticks,
zone 4, shown in blue

Land lines represent unsurveyed and unmarked locations
predetermined by the Bureau of Land Management
Folio S10, Seward Meridian



FOR SALE BY U. S. GEOLOGICAL SURVEY
FAIRBANKS, ALASKA 99701, DENVER, COLORADO 80225, OR RESTON, VIRGINIA 22092
A FOLDER DESCRIBING TOPOGRAPHIC MAPS AND SYMBOLS IS AVAILABLE ON REQUEST



ROAD CLASSIFICATION
No roads or trails in this area

BETHEL (C-3), ALASKA
N6030-W15945/15X22.5
1954

RETURN TO:
NWD HISTORICAL MAP ARCHIVES
USGS NATIONAL CENTER, MS-522
RESTON, VA 22092