

UNITED STATES
DEPARTMENT OF THE INTERIOR
GEOLOGICAL SURVEY

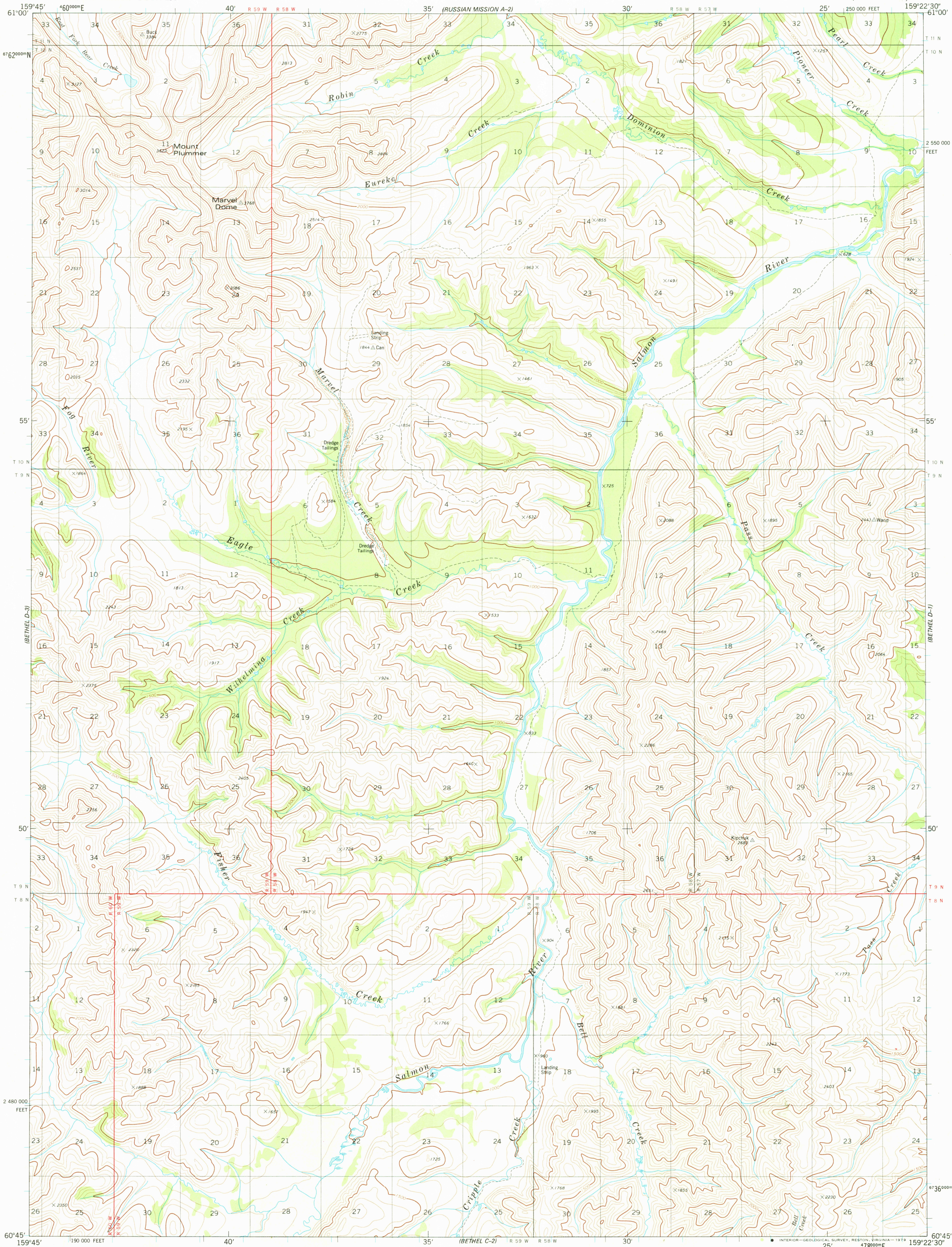


BETHEL (D-2) QUADRANGLE

ALASKA

1:63 360 SERIES (TOPOGRAPHIC)

250 000 FEET



Mapped, edited, and published by the Geological Survey

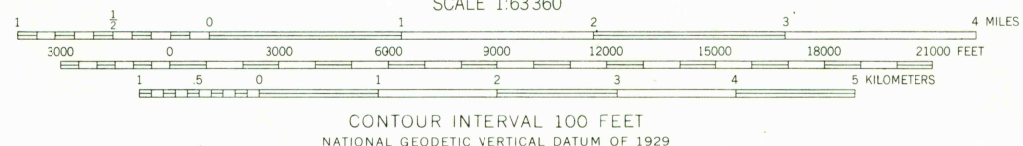
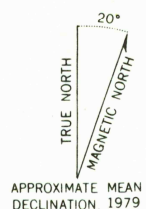
Control by USGS, NOS/NOAA and USCE

Topography by photogrammetric methods from aerial photographs
taken 1973. Field annotated 1976. Map not field checked
Map edited 1979

Projection and 1000-meter grid ticks: Universal
Transverse Mercator, zone 4
10,000-foot grid ticks based on Alaska coordinate
system, zone 6. 1927 North American datum

Gray land lines represent unsurveyed and unmarked locations
predetermined by the Bureau of Land Management
Folio S-10, Seward Meridian

Swamps as portrayed, indicate only the wetter areas,
usually of low relief, as interpreted from aerial photographs



FOR SALE BY U. S. GEOLOGICAL SURVEY
FAIRBANKS, ALASKA 99701, DENVER, COLORADO 80225, OR RESTON, VIRGINIA 22092
A FOLDER DESCRIBING TOPOGRAPHIC MAPS AND SYMBOLS IS AVAILABLE ON REQUEST



BETHEL (D-2), ALASKA
N6045 W15922.5/15 X 22.5

1979

USGS
Historical File
Topographic Division

MAY 0 1 1979

2350