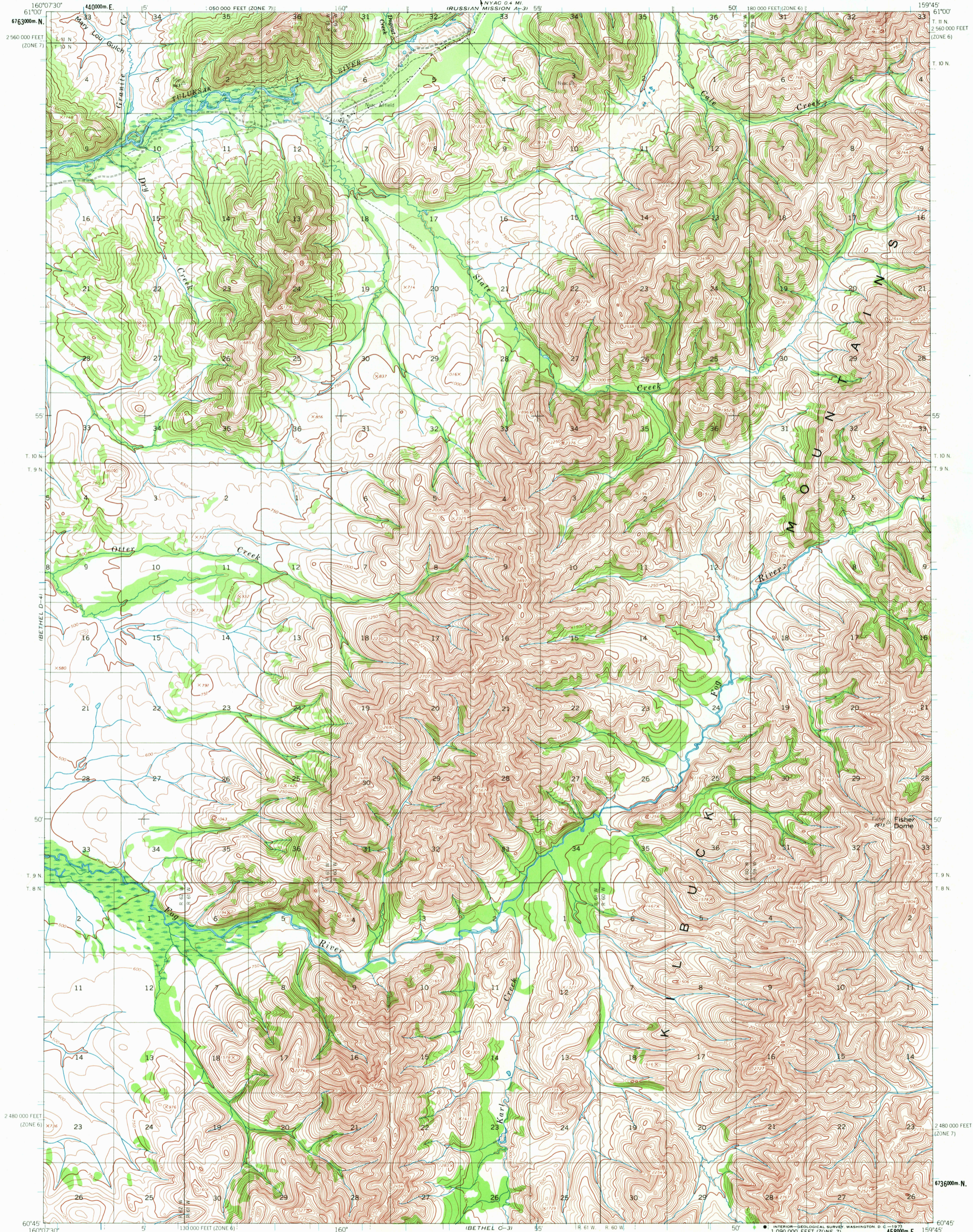


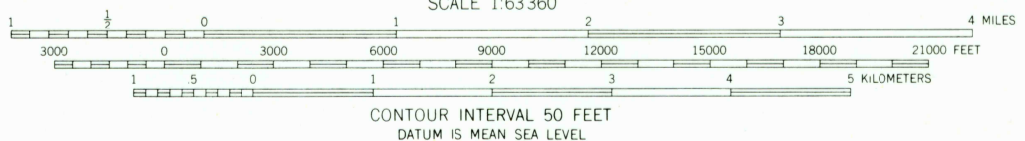
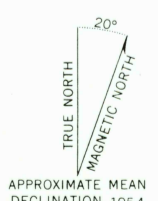
UNITED STATES
DEPARTMENT OF THE INTERIOR
GEOLOGICAL SURVEY

BETHEL (D-3) QUADRANGLE
ALASKA
1:63 360 SERIES (TOPOGRAPHIC)

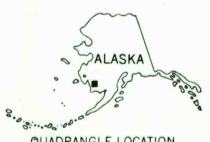


IBETHEL D-4
IBETHEL C-4
IBETHEL C-31

Map by the Army Map Service
Edited and published by the Geological Survey
Control by USC&GS and USCE
Topography by photogrammetric methods from aerial photographs
taken 1957, field annotated 1954. Map not field checked
Universal Transverse Mercator projection, 1927 North American datum
10,000-foot grids based on Alaska coordinate system, zones 6 and 7
1000 meter Universal Transverse Mercator grid ticks,
zone 4, shown in blue
Land lines represent unsurveyed and unmarked locations
predetermined by the Bureau of Land Management
Folio S 10, Seward Meridian



CONTOUR INTERVAL 50 FEET
DATUM IS MEAN SEA LEVEL



ROAD CLASSIFICATION
Unimproved dirt - - - - -

FOR SALE BY U.S. GEOLOGICAL SURVEY
FAIRBANKS, ALASKA 99701, DENVER, COLORADO 80225 OR WASHINGTON, D. C. 20242
A FOLDER DESCRIBING TOPOGRAPHIC MAPS AND SYMBOLS IS AVAILABLE ON REQUEST

BETHEL (D-3), ALASKA
N6045-W15945/15X22.5
1954
MINOR REVISIONS 1971

USGS
HISTORICAL FILE
TOPOGRAPHIC DIVISION
4125

OCT 13 1971