

BETHEL, ALASKA
1985
EXPERIMENTAL EDITION

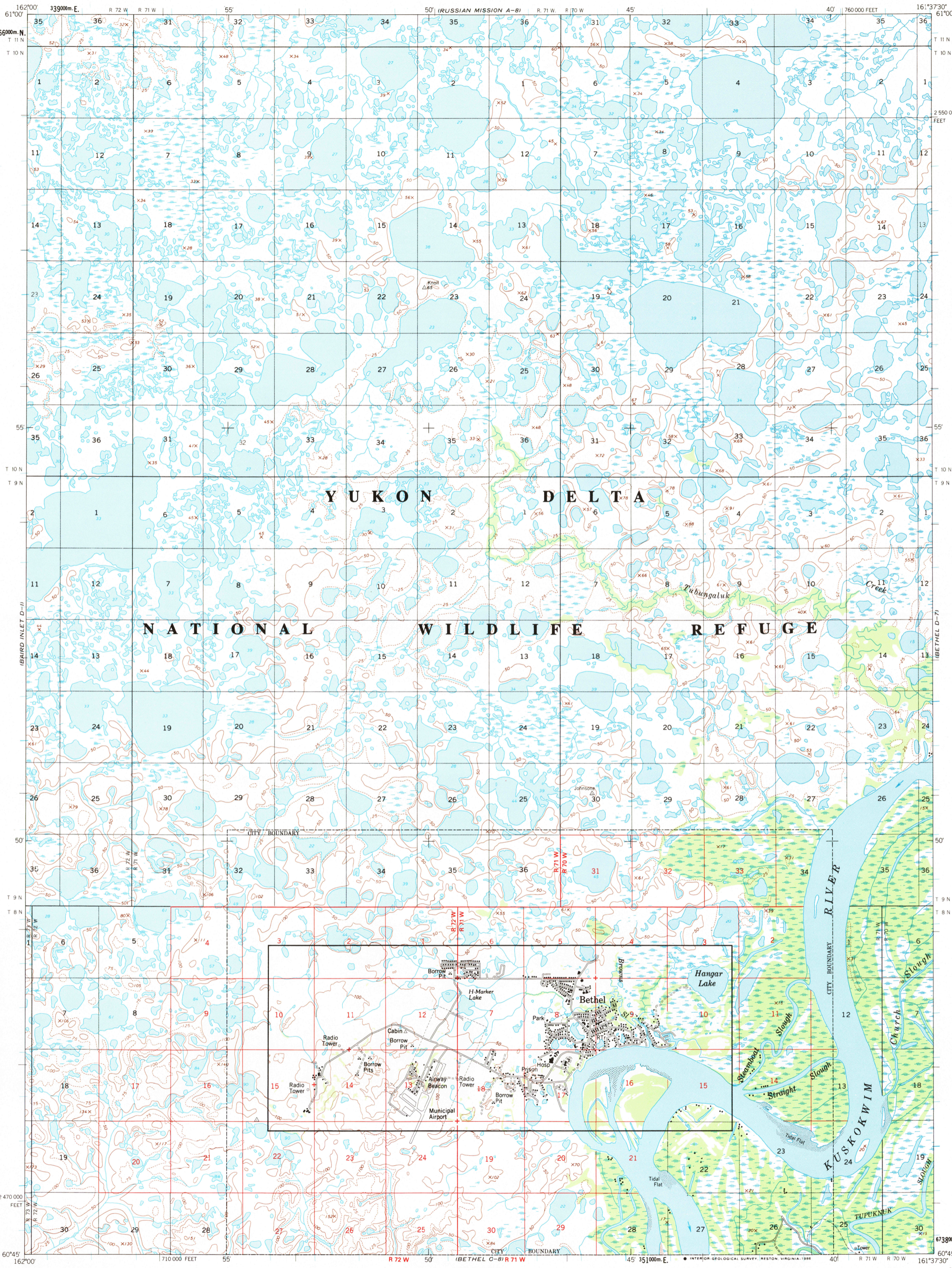


CONTOUR INTERVAL 10 FEET
THIS MAP COMPLIES WITH NATIONAL MAP ACCURACY STANDARDS

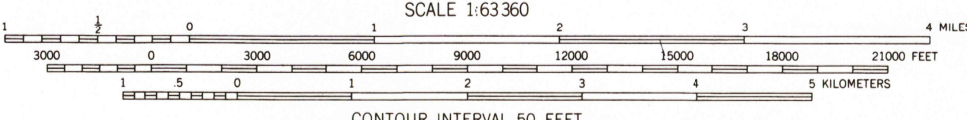
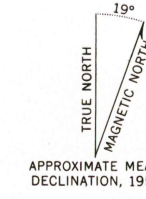
Produced by the United States Geological Survey
Topography by photogrammetric methods from aerial photographs taken 1983. Field checked 1984. Map edited 1985
To place on the predicted North American Datum 1983 move the projection lines 87 meters north and 125 meters east as shown by dashed corner ticks

UNITED STATES
DEPARTMENT OF THE INTERIOR
GEOLOGICAL SURVEY

BETHEL (D-8) QUADRANGLE
ALASKA
1:63 360 SERIES (TOPOGRAPHIC)



Produced by the United States Geological Survey
Control by USGS and NOS/NOAA
Topography by photogrammetric methods from aerial photographs taken 1952 and 1957, field annotated 1954. Map not field checked
Bethel area revised from 1:25,000-scale map, 1985
Projection and 1000-meter grid ticks shown in blue:
Universal Transverse Mercator, zone 4
10,000-foot grid ticks based on Alaska coordinate system, zone 7, 1927 North American Datum
To place on the predicted North American Datum 1983 move the projection lines 87 meters north and 125 meters east
Gray land lines represent unsurveyed and unmarked locations predetermined by the Bureau of Land Management
Foto S-9, Seward Meridian
There may be private inholdings within the boundaries of the National or State reservations shown on this map



CONTOUR INTERVAL 50 FEET
DOTTED LINES REPRESENT 25 FOOT CONTOURS
NATIONAL GEODETIC VERTICAL DATUM OF 1929
SHORELINE SHOWS APPROXIMATE LINE OF MEAN HIGH WATER
THE MEAN RANGE OF TIDE IS APPROXIMATELY 1 FOOT



ROAD CLASSIFICATION
Light duty Unimproved dirt

BETHEL (D-8), ALASKA
60161-66-TF-063

1954
LIMITED REVISION 1985

OUTLINE REPRESENTS LIMITS
OF 1:25,000 SCALE MAP(S)

USGS NMD HISTORICAL MAP

APR 15 1986

REC'D FILE COPY