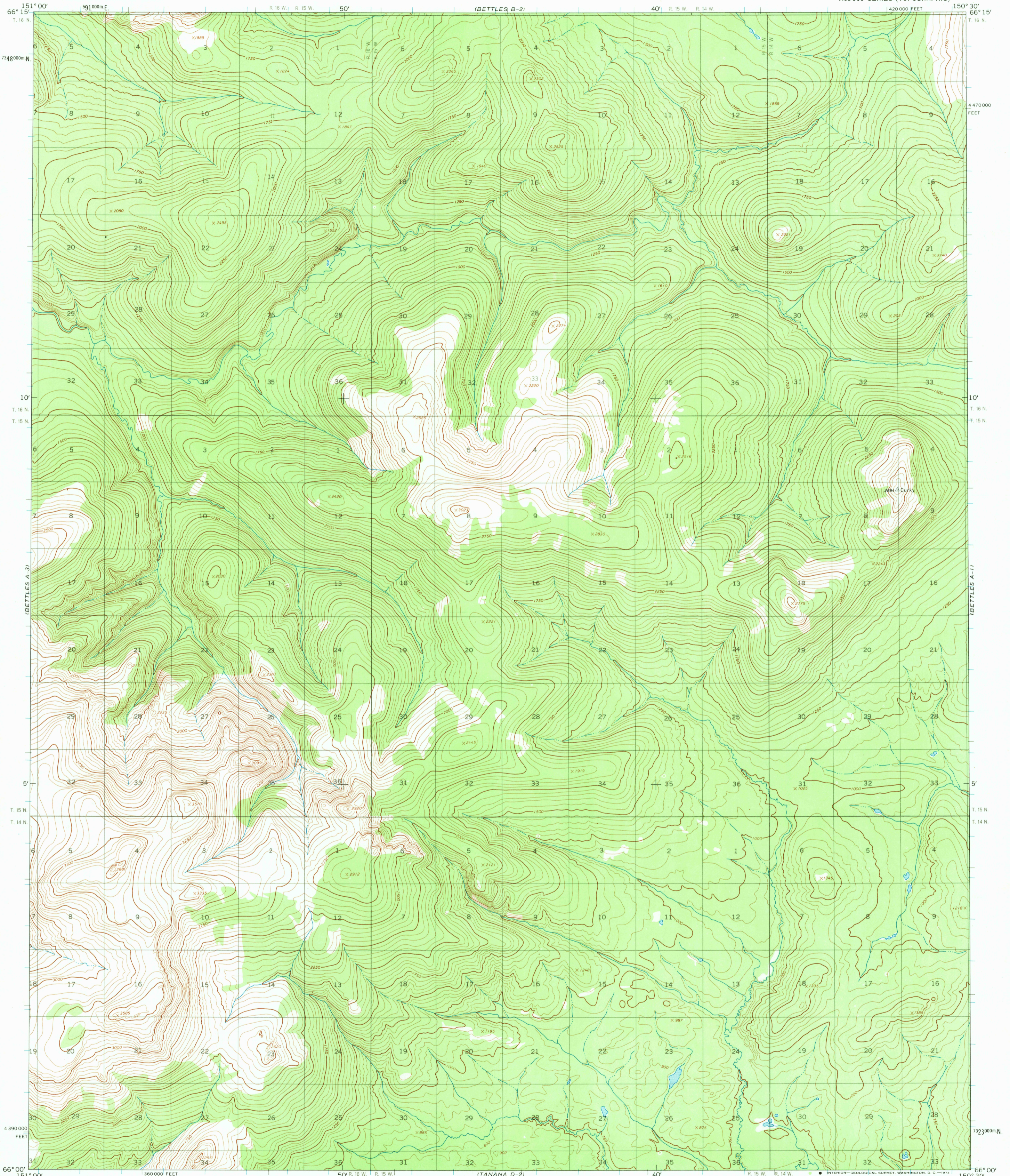


UNITED STATES
DEPARTMENT OF THE INTERIOR
GEOLOGICAL SURVEY

BETTLES (A-2) QUADRANGLE
ALASKA

1:63 360 SERIES (TOPOGRAPHIC)



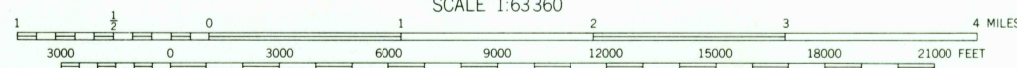
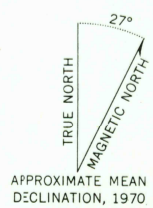
Mapped, edited, and published by the Geological Survey

Control by USGS and USC&GS

Topography by photogrammetric methods from aerial photographs taken 1970, field annotated 1970. Map not field checked

Universal Transverse Mercator projection. 1927 North American datum 10,000-foot grid based on Alaska coordinate system, zone 4 1000-meter Universal Transverse Mercator grid ticks, zone 5, shown in blue

Land lines represent unsurveyed and unmarked locations, predetermined by the Bureau of Land Management Folios F-3 and F-6, Fairbanks Meridian



CONTOUR INTERVAL 50 FEET
DATUM IS MEAN SEA LEVEL

FOR SALE BY U. S. GEOLOGICAL SURVEY
FAIRBANKS, ALASKA 99701, DENVER, COLORADO 80225, OR WASHINGTON, D. C. 20242
A FOLDER DESCRIBING TOPOGRAPHIC MAPS AND SYMBOLS IS AVAILABLE ON REQUEST



USGS
HISTORICAL FILE
TOPOGRAPHIC DIVISION

ROAD CLASSIFICATION
No roads or trails in this area

JAN 2 1973

3190

BETTLES (A-2), ALASKA
N6600-W15030/15X30

1970

#6