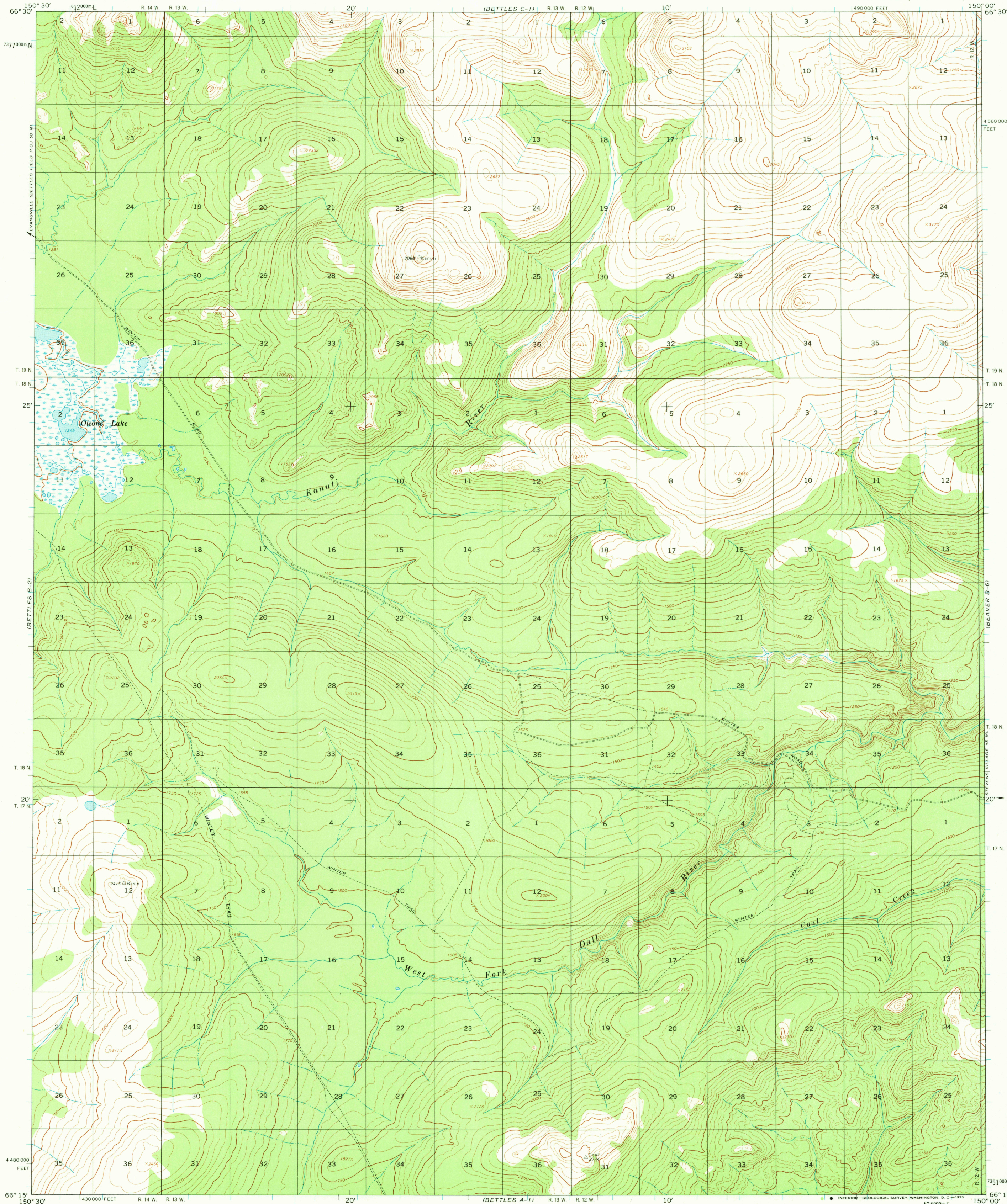


UNITED STATES
DEPARTMENT OF THE INTERIOR
GEOLOGICAL SURVEY

BETTLES (B-1) QUADRANGLE
ALASKA

1:63 360 SERIES (TOPOGRAPHIC)

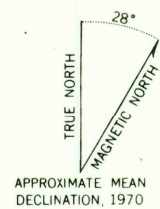


Mapped, edited, and published by the Geological Survey
Control by USGS and USC&GS

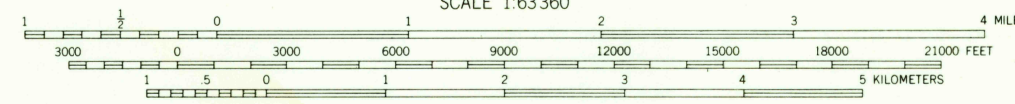
Topography by photogrammetric methods from aerial photographs
taken 1970, field annotated 1970. Map not field checked
Universal Transverse Mercator projection. 1927 North American datum
10,000-foot grid based on Alaska coordinate system, zone 4
1000-meter Universal Transverse Mercator grid ticks,
zone 5, shown in blue

Land lines represent unsurveyed and unmarked locations
predetermined by the Bureau of Land Management
Folio F-3, Fairbanks Meridian

Swamps, as portrayed, indicate only the wetter areas,
usually of low relief, as interpreted from aerial photographs



APPROXIMATE MEAN
DECLINATION, 1970



CONTOUR INTERVAL 50 FEET
DATUM IS MEAN SEA LEVEL



QUADRANGLE LOCATION

ROAD CLASSIFICATION
Unimproved dirt

BETTLES (B-1), ALASKA

N6615-W15000/15 X 30

1970

FOR SALE BY U. S. GEOLOGICAL SURVEY
FAIRBANKS, ALASKA 99701, DENVER, COLORADO 80225, OR WASHINGTON, D. C. 20242
A FOLDER DESCRIBING TOPOGRAPHIC MAPS AND SYMBOLS IS AVAILABLE ON REQUEST

JAN 31 1973

3665
USGS
HISTORICAL FILE
TOPOGRAPHIC DIVISION