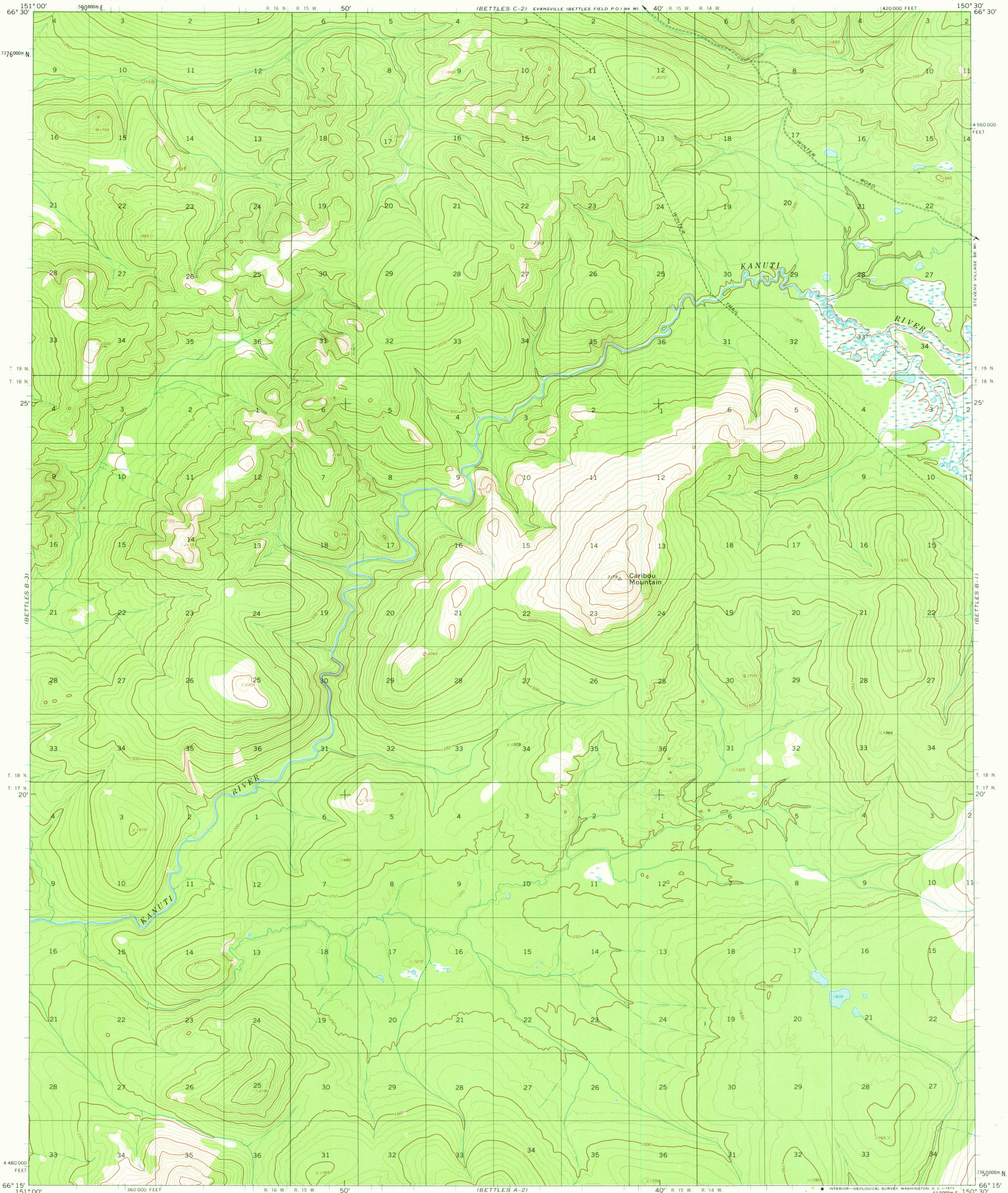
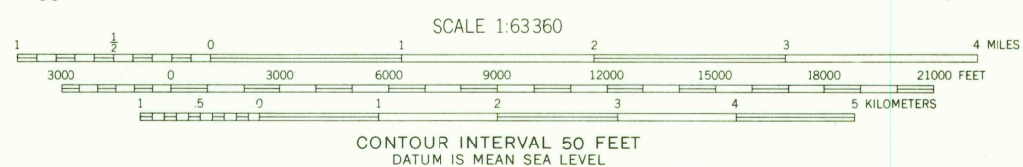
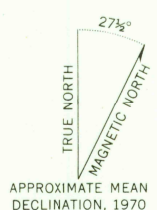


UNITED STATES  
DEPARTMENT OF THE INTERIOR  
GEOLOGICAL SURVEY

BETTLES (B-2) QUADRANGLE  
ALASKA  
1:63,360 SERIES (TOPOGRAPHIC)



Mapped, edited, and published by the Geological Survey  
Control by USGS and USC&GS  
Topography by photogrammetric methods from aerial photographs taken 1970, field annotated 1970. Map not field checked  
Universal Transverse Mercator projection. 1927 North American datum 10,000-foot grid based on Alaska coordinate system, zone 4 1000-meter Universal Transverse Mercator grid ticks, zone 5, shown in blue  
Land lines represent unsurveyed and unmarked locations predetermined by the Bureau of Land Management Folio F-3, Fairbanks Meridian  
Swamps, as portrayed, indicate only the wetter areas, usually of low relief, as interpreted from aerial photographs



SCALE 1:63360  
CONTOUR INTERVAL 50 FEET  
DATUM IS MEAN SEA LEVEL



FOR SALE BY U. S. GEOLOGICAL SURVEY  
FAIRBANKS, ALASKA 99701, DENVER, COLORADO 80225, OR WASHINGTON, D. C. 20242  
A FOLDER DESCRIBING TOPOGRAPHIC MAPS AND SYMBOLS IS AVAILABLE ON REQUEST

BETTLES (B-2), ALASKA  
N6615-W15030/15X30  
1970

ROAD CLASSIFICATION  
Unimproved dirt -----

JAN 31 1973

3660  
USGS  
HISTORICAL FILE  
TOPOGRAPHIC DIVISION