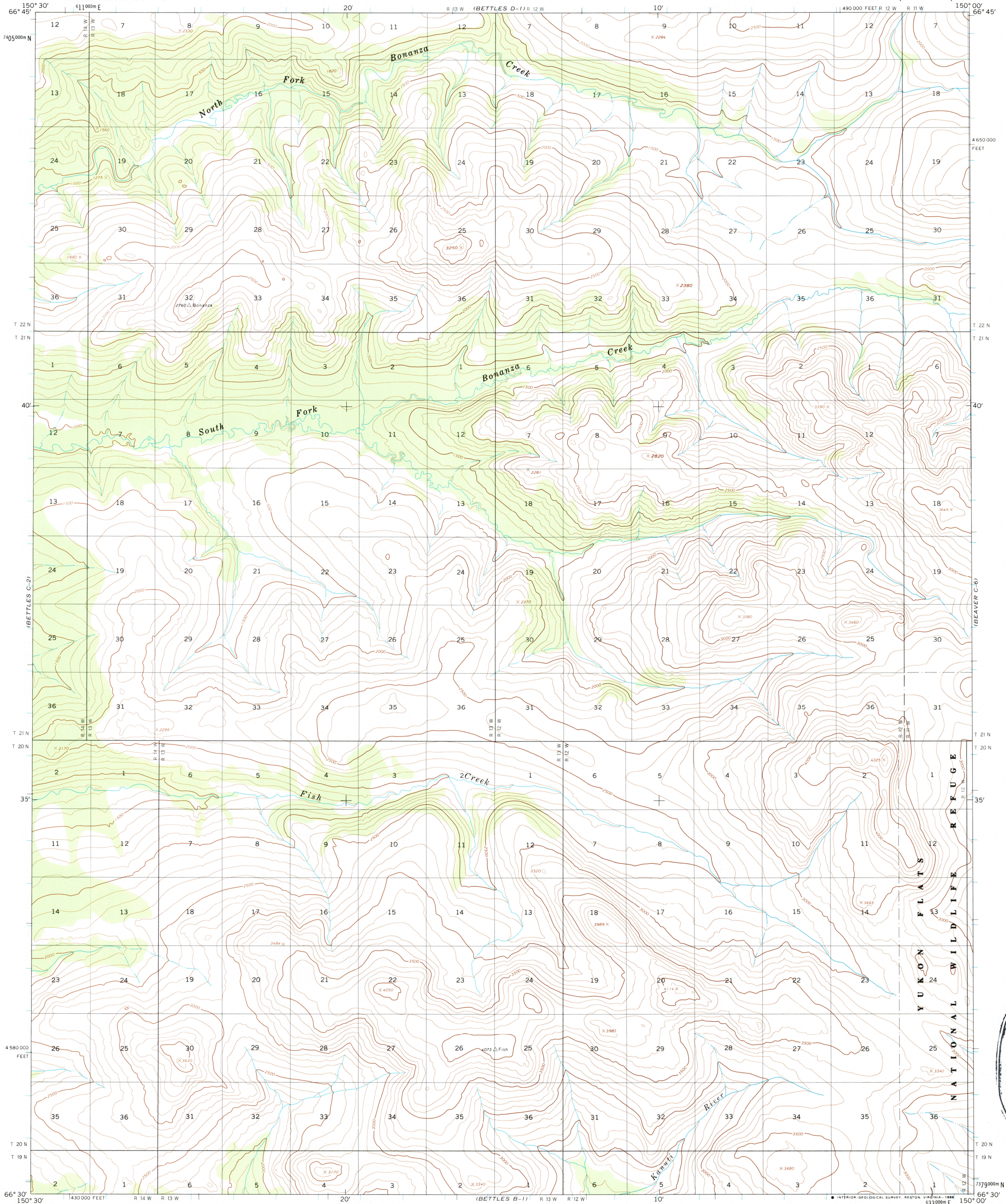


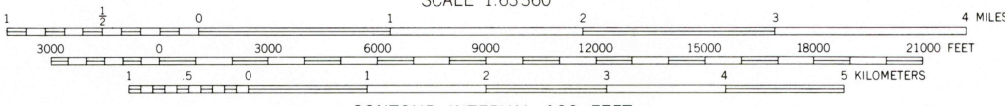
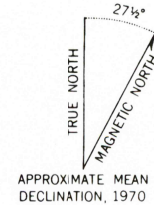
UNITED STATES  
DEPARTMENT OF THE INTERIOR  
GEOLOGICAL SURVEY

BETTLES (C-1) QUADRANGLE  
ALASKA

1:63 360 SERIES (TOPOGRAPHIC)



Mapped, edited, and published by the Geological Survey  
Control by USGS, and NOS/NOAA  
Topography by photogrammetric methods from aerial photographs  
taken 1970, field annotated 1970. Map not field checked  
Projection and 1000-meter grid ticks shown in blue:  
Universal Transverse Mercator, zone 5  
10,000-foot grid ticks based on Alaska coordinate  
system, zone 4. 1927 North American Datum  
To place on the predicted North American Datum 1983 move  
the projection lines 53 meters north and 119 meters east  
Land lines represent unsurveyed and unmarked locations  
predetermined by the Bureau of Land Management  
Folio F-3, Fairbanks Meridian  
Federal reservation boundaries established by The Alaska National  
Interest Lands Conservation Act, PL 96-487, Dec. 2, 1980, are  
shown as compiled by the administering agencies  
There may be private inholdings within the boundaries of  
the National or State reservations shown on this map



CONTOUR INTERVAL 100 FEET  
NATIONAL GEODETIC VERTICAL DATUM OF 1929

FOR SALE BY U.S. GEOLOGICAL SURVEY  
FAIRBANKS, ALASKA 99701, DENVER, COLORADO 80225, OR RESTON, VIRGINIA 22092  
A FOLDER DESCRIBING TOPOGRAPHIC MAPS AND SYMBOLS IS AVAILABLE ON REQUEST



BETTLES (C-1), ALASKA  
66150-E1-TF-063

1970  
MINOR REVISION 1987

ROAD CLASSIFICATION  
No roads or trails in this area

