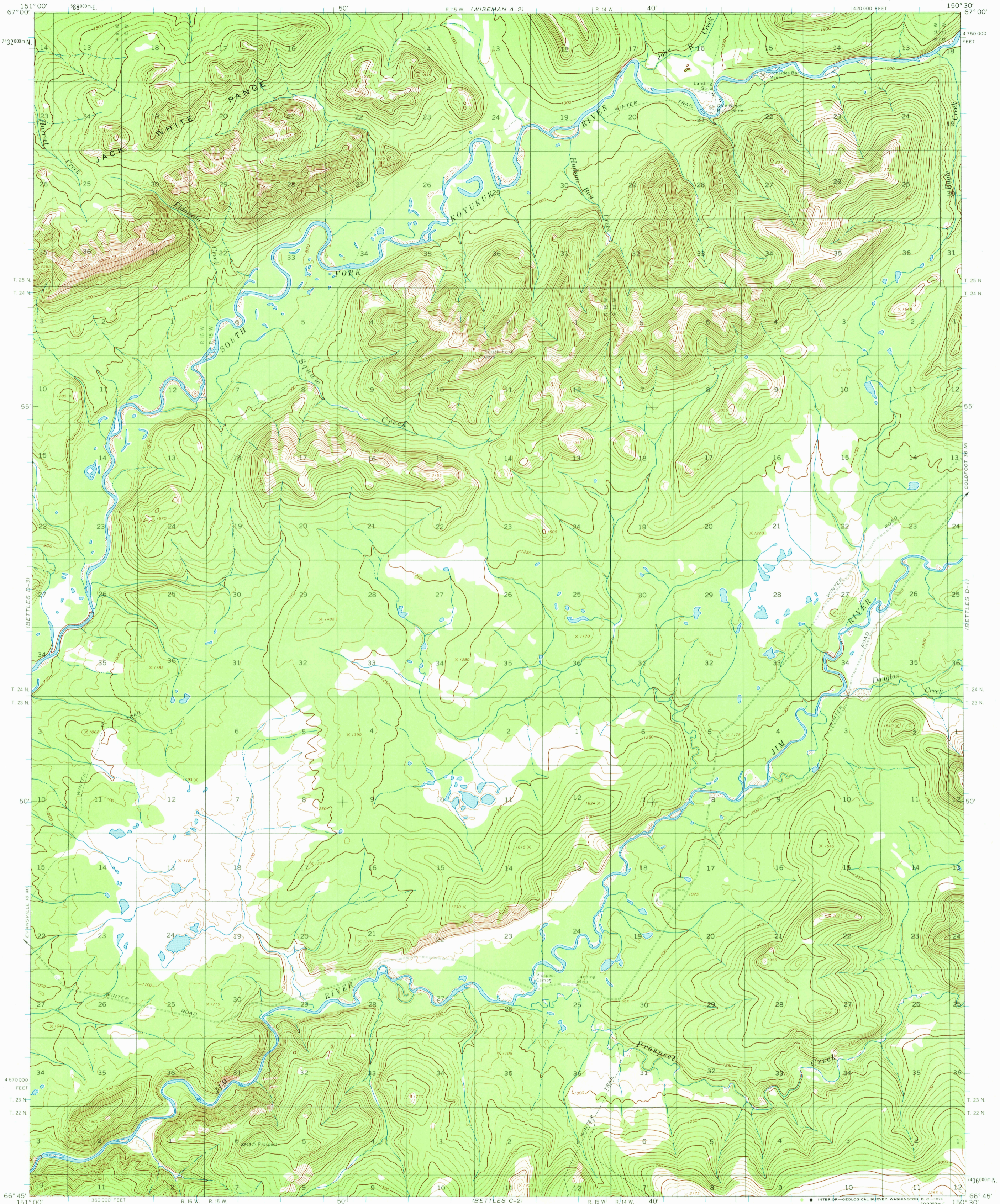
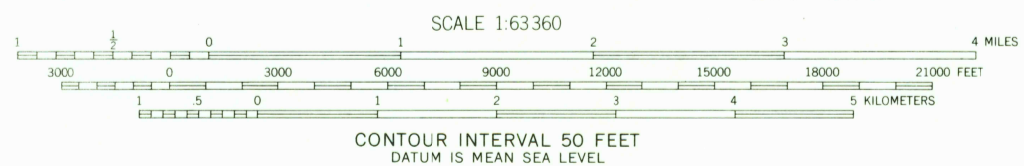
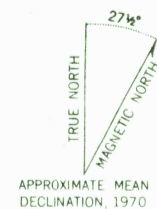


(WISEMAN A-3)

(WISEMAN A-1)



Mapped, edited, and published by the Geological Survey
Control by USGS and USC&GS
Topography by photogrammetric methods from aerial photographs
taken 1970, field annotated 1970. Map not field checked
Universal Transverse Mercator projection. 1927 North Americandatum
10,000-foot grid based on Alaska coordinate system, zone 4
1000-meter Universal Transverse Mercator grid ticks,
zone 5, shown in blue
Land lines represent unsurveyed and unmarked locations
pre-determined by the Bureau of Land Management
Folio F-3, Fairbanks Meridian



SCALE 1:63 360
CONTOUR INTERVAL 50 FEET
DATUM IS MEAN SEA LEVEL



ROAD CLASSIFICATION
Unimproved dirt -----

FOR SALE BY U. S. GEOLOGICAL SURVEY
FAIRBANKS, ALASKA 99701, DENVER, COLORADO 80225 OR WASHINGTON, D. C. 20242
A FOLDER DESCRIBING TOPOGRAPHIC MAPS AND SYMBOLS IS AVAILABLE ON REQUEST

BETTLES (D-2), ALASKA
N6645-W15030/15 X 30

AUG 2 1973

USGS
Historical File
Topographic Division

3855