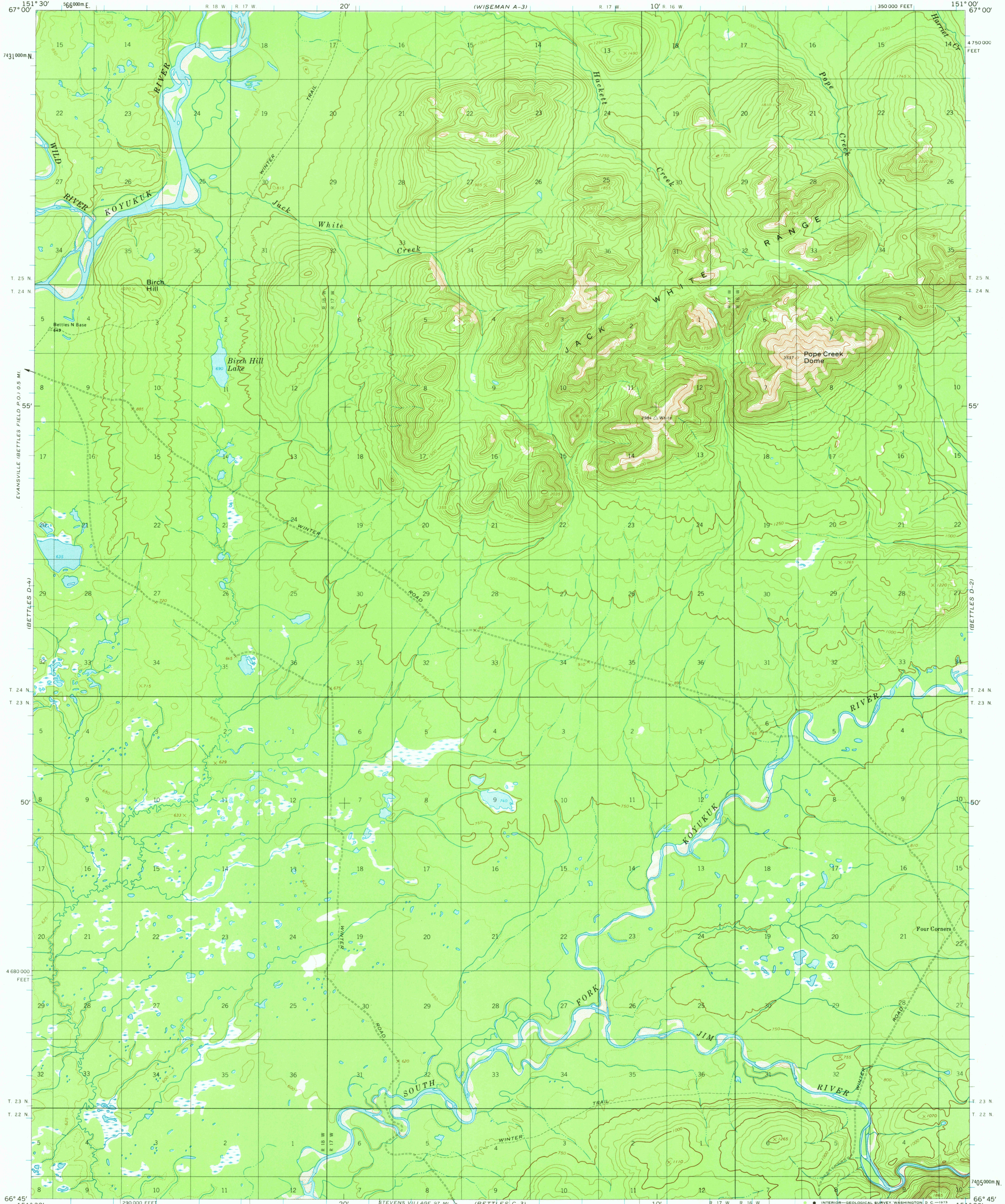
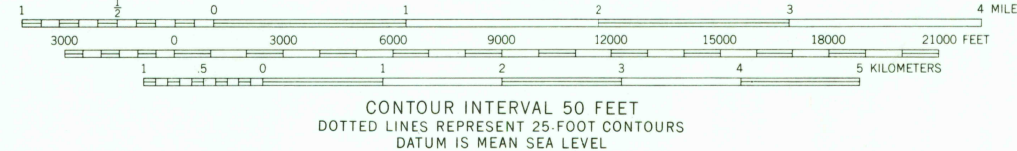
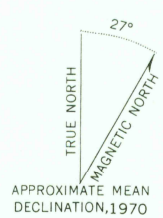


UNITED STATES
DEPARTMENT OF THE INTERIOR
GEOLOGICAL SURVEY

BETTLES (D-3) QUADRANGLE
ALASKA
1:63 360 SERIES (TOPOGRAPHIC)



Mapped, edited, and published by the Geological Survey
Control by USGS and USC&GS
Topography by photogrammetric methods from aerial photographs
taken 1970, field annotated 1970. Map not field checked
Universal Transverse Mercator projection. 1927 North American datum
10,000-foot grid based on Alaska coordinate system, zone 4
1000-meter Universal Transverse Mercator grid ticks,
zone 5, shown in blue
Land lines represent unsurveyed and unmarked locations
predetermined by Bureau of Land Management
Folios F-3 and F-4, Fairbanks Meridian
Swamps, as portrayed, indicate only the wetter areas
usually of low relief as interpreted from aerial photographs



BETTLES (D-3), ALASKA
N6645-W15100/15X30
1970

FOR SALE BY U.S. GEOLOGICAL SURVEY
FAIRBANKS, ALASKA 99701, DENVER, COLORADO 80225, OR WASHINGTON, D. C. 20242
A FOLDER DESCRIBING TOPOGRAPHIC MAPS AND SYMBOLS IS AVAILABLE ON REQUEST

USGS
HISTORICAL FILE
TOPOGRAPHIC DIVISION

FEB 20 1972
FEB 20 1973

3330