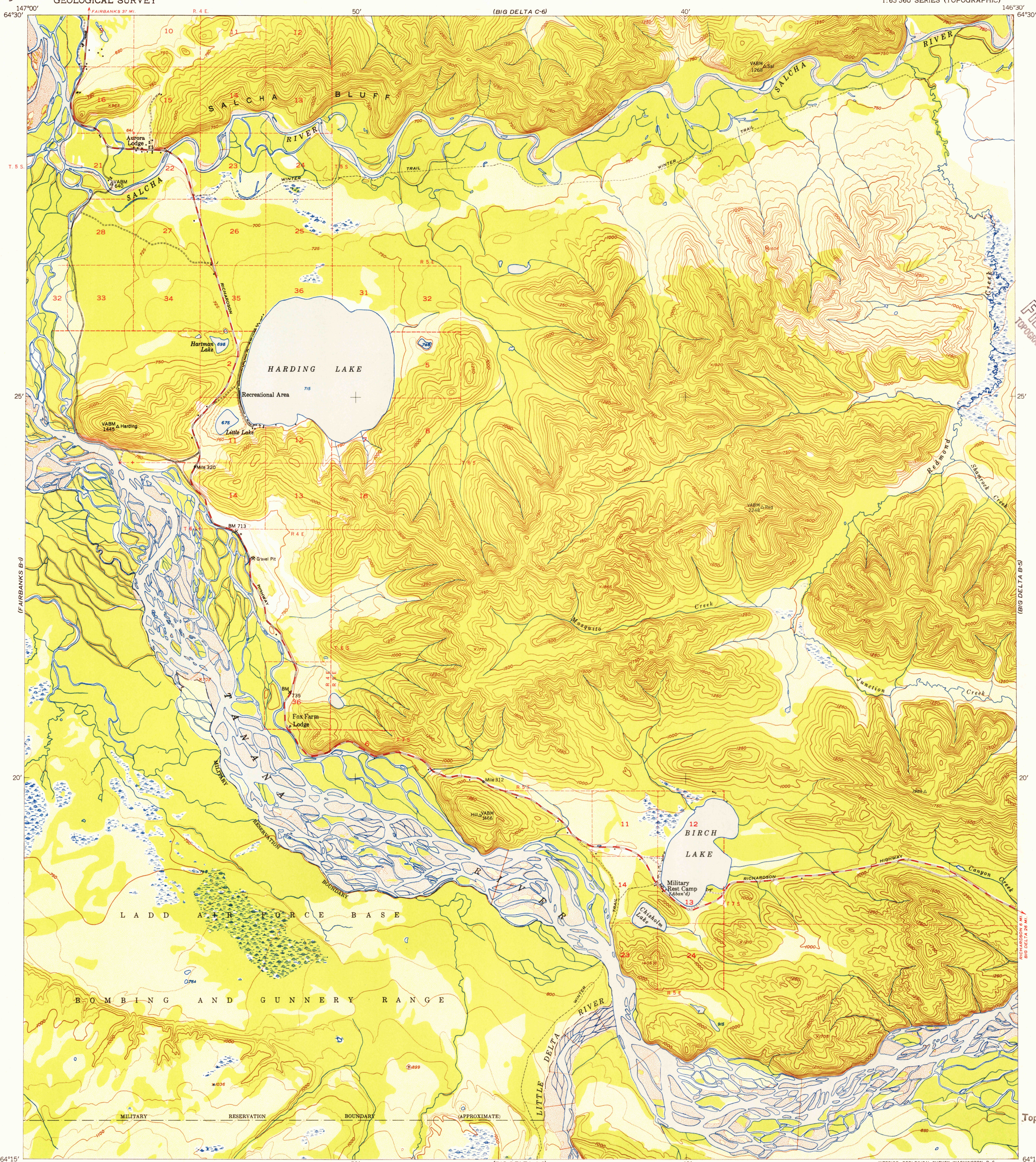


(FAIRBANKS C-J)

UNITED STATES
DEPARTMENT OF THE INTERIOR
GEOLOGICAL SURVEY

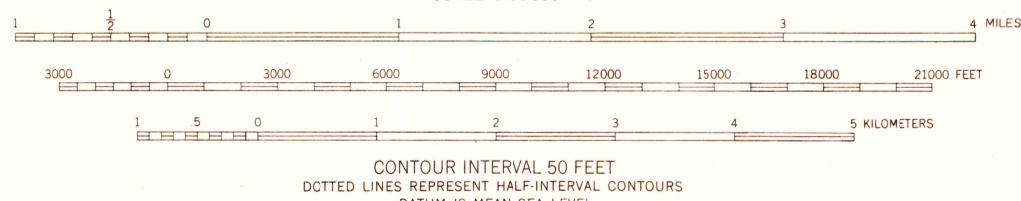
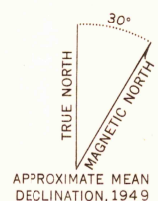
BIG DELTA (B-6) QUADRANGLE
ALASKA-FOURTH JUDICIAL DIVISION
1:63 360 SERIES (TOPOGRAPHIC)



U.S.G.S.
FILE COPY
TOPOGRAPHIC DIVISION

(FAIRBANKS A-J)

Mapped, edited, and published by the Geological Survey
Control by USGS and USC&GS
Topography from aerial photographs by multiplex methods
Aerial photographs taken 1949
Universal Transverse Mercator projection, zone 6
1927 North American datum
Dashed land lines indicate approximate location
Unchecked elevations shown in brown and blue



U.S.G.S.
FILE COPY
TOPOGRAPHIC DIVISION

ROAD CLASSIFICATION

ALL WEATHER ROADS	DRY WEATHER ROADS
Hard-surface	Improved dirt
Other	None
	Unimproved dirt
	Trails

BIG DELTA (B-6), ALASKA
N6415-W14630/15X30
1949

FOR SALE BY U.S. GEOLOGICAL SURVEY
FAIRBANKS, ALASKA FEDERAL CENTER, DENVER, COLORADO WASHINGTON 25, D. C.
A FOLDER DESCRIBING TOPOGRAPHIC MAPS AND SYMBOLS IS AVAILABLE ON REQUEST

USGS
Historical File
Topographic Division

NOV 2 1956
4225