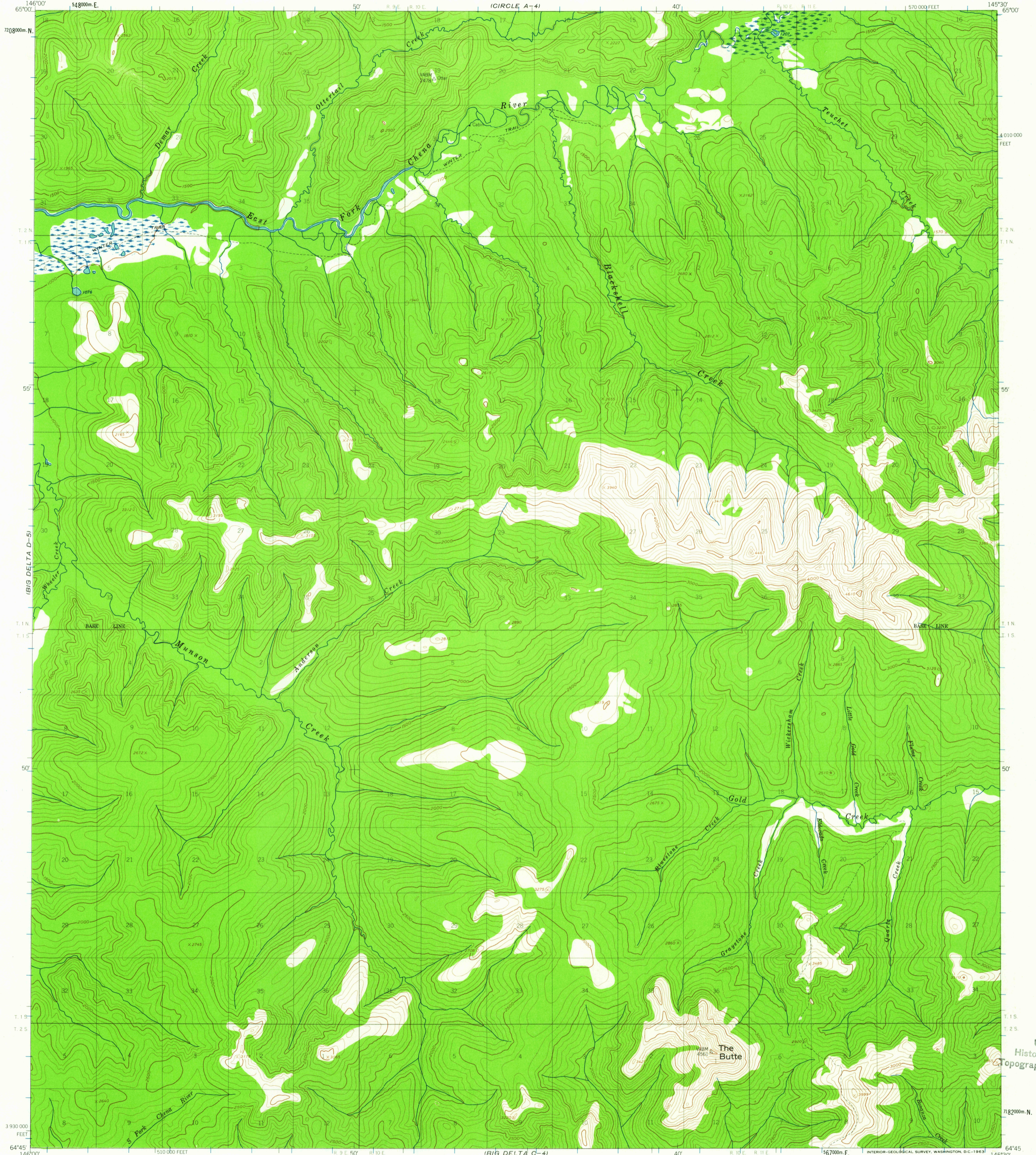
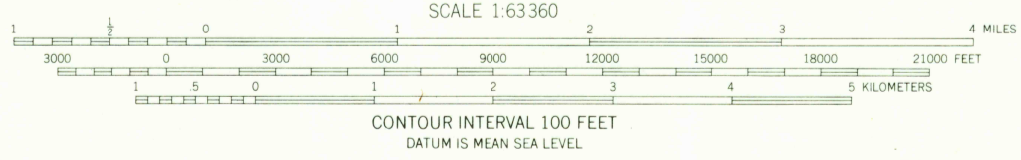
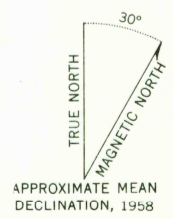


CIRCLE A-5

CIRCLE A-3



Mapped and published by the Geological Survey
Control by USGS
Topography by photogrammetric methods from aerial photographs taken 1951-1954, field annotated 1958. Map not field checked
Universal Transverse Mercator projection, 1927 North American datum
10,000-foot grid based on Alaska coordinate system, zone 3
1000-meter Universal Transverse Mercator grid ticks, zone 6, shown in blue
Land lines represent unsurveyed and unmarked locations predetermined by the Bureau of Land Management
Folios F-7 and F-9, Fairbanks Meridian
Swamps, as portrayed, indicate only the wetter areas, usually of low relief, as interpreted from aerial photographs



FOR SALE BY U.S. GEOLOGICAL SURVEY
FAIRBANKS, ALASKA DENVER 25, COLORADO WASHINGTON 25, D.C.
A FOLDER DESCRIBING TOPOGRAPHIC MAPS AND SYMBOLS IS AVAILABLE ON REQUEST

USGS
Historical File
Topographic Division



U.S.G.S.
COPY
TOPOGRAPHIC DIVISION
BIG DELTA (D-4), ALASKA
N6445-W14530/15X30
1958

FEB 25 1953

2690