

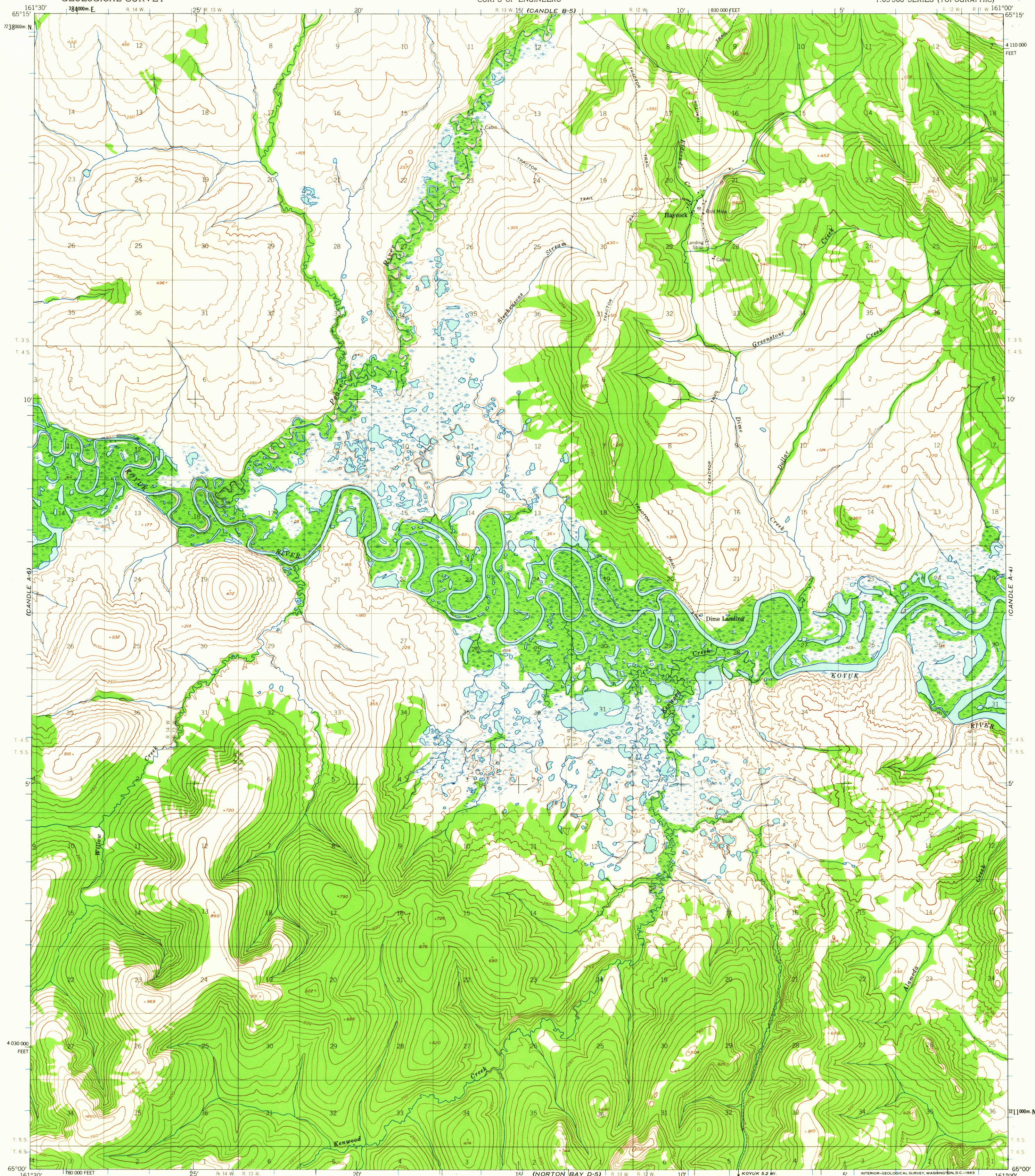
CANDLE B-6

UNITED STATES  
DEPARTMENT OF THE INTERIOR  
GEOLOGICAL SURVEY

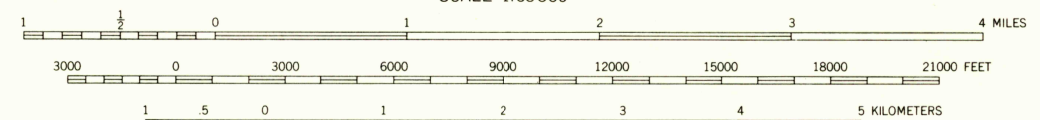
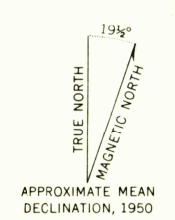
UNITED STATES  
DEPARTMENT OF THE ARMY  
CORPS OF ENGINEERS

CANDLE (A-5) QUADRANGLE  
ALASKA  
1:63 360 SERIES (TOPOGRAPHIC)

CANDLE B-4



Map by the Army Map Service  
Published for civil use by the Geological Survey  
Control by USCG&S, USGS and USCE  
Topography by photogrammetric methods from aerial photographs  
taken 1950. Map not field checked  
Universal Transverse Mercator projection, 1927 North American datum  
10,000-foot grid based on Alaska coordinate system, zone 7  
1000-meter Universal Transverse Mercator grid ticks,  
zone 4, shown in blue  
Land lines represent unsurveyed and unmarked locations  
predetermined by the Bureau of Land Management  
Folio K-12, Kateel River Meridian



CONTOUR INTERVAL 50 FEET  
DASHED LINES REPRESENT 25-FOOT CONTOURS  
DATUM IS MEAN SEA LEVEL



ROAD CLASSIFICATION  
Trails

CANDLE (A-5), ALASKA  
N6500-W16100/15x30

1950  
MINOR REVISIONS 1963

FOR SALE BY U. S. GEOLOGICAL SURVEY  
FAIRBANKS, ALASKA DENVER 25, COLORADO WASHINGTON 25, D. C.  
A FOLDER DESCRIBING TOPOGRAPHIC MAPS AND SYMBOLS IS AVAILABLE ON REQUEST

OCT 24 1963

NORTON BAY D-6

NORTON BAY D-5

2220