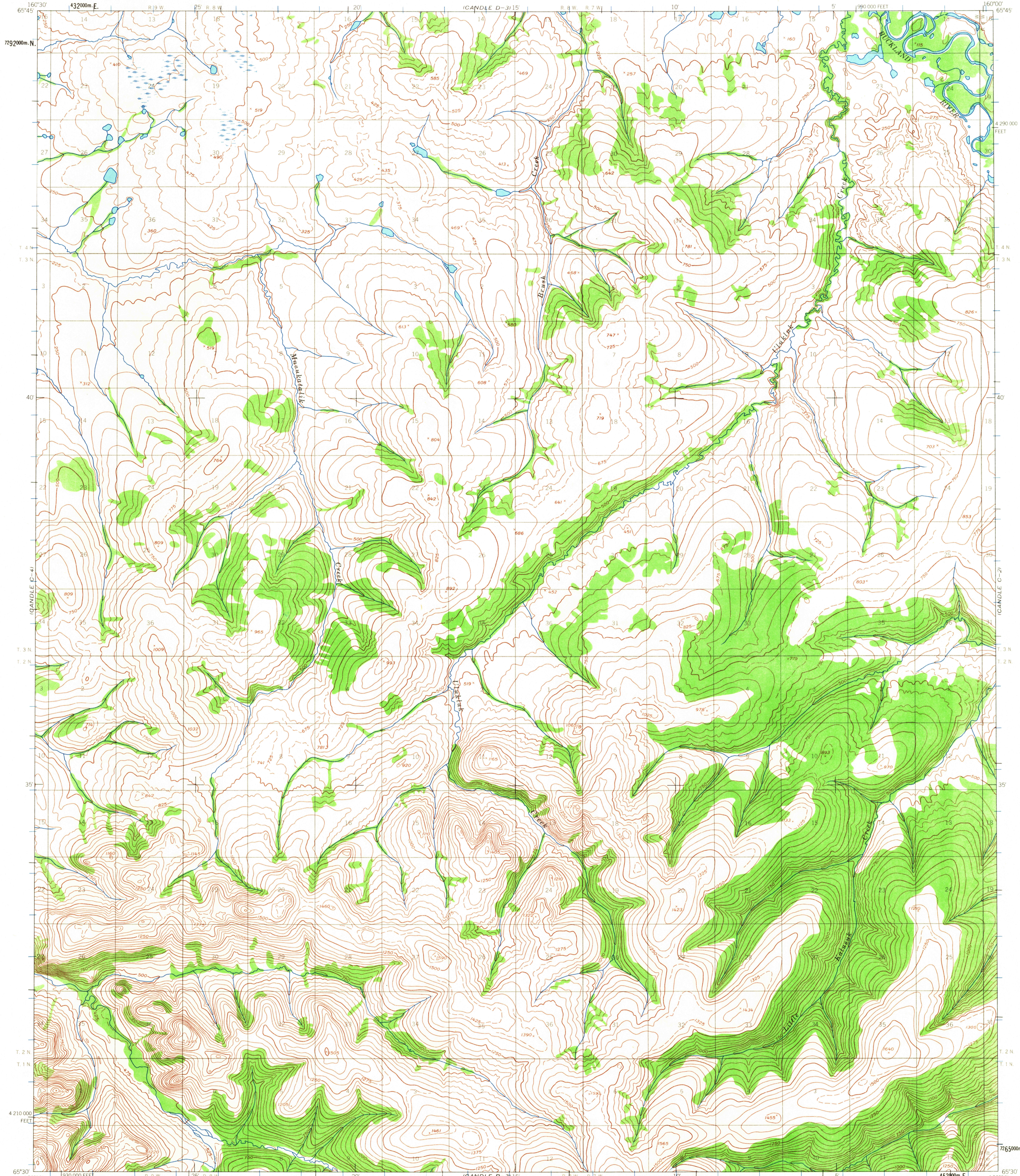


UNITED STATES
DEPARTMENT OF THE INTERIOR
GEOLOGICAL SURVEY

CANDLE (C-3) QUADRANGLE
ALASKA
1:63 360 SERIES (TOPOGRAPHIC)



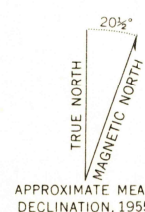
Mapped by the Army Map Service
Edited and published by the Geological Survey

Control by USC&GS and USCE

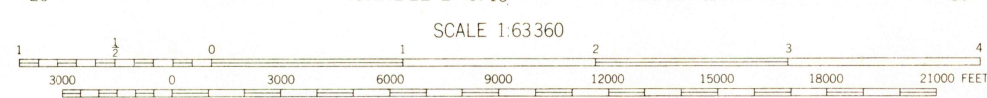
Topography by photogrammetric methods from aerial photographs
taken 1955, field annotated 1955. Map not field checked

Universal Transverse Mercator projection, 1927 North American datum
10,000 foot grid based on Alaska coordinate system, zone 7
1000 meter Universal Transverse Mercator grid ticks,
zone 4, shown in blue

Land lines represent unsurveyed and unmarked locations
determined by the Bureau of Land Management
Folio K-7, Katzeel River Meridian



APPROXIMATE MEAN
DECLINATION, 1955



CONTOUR INTERVAL 50 FEET
DASHED LINES REPRESENT 25 FOOT CONTOURS
DATUM IS APPROXIMATE MEAN SEA LEVEL

FOR SALE BY U. S. GEOLOGICAL SURVEY
FAIRBANKS, ALASKA 99701, DENVER, COLORADO 80225, OR WASHINGTON, D.C. 20242
A FOLDER DESCRIBING TOPOGRAPHIC MAPS AND SYMBOLS IS AVAILABLE ON REQUEST



QUADRANGLE LOCATION

ROAD CLASSIFICATION
No roads or trails in this area

CANDLE (C-3), ALASKA
N6530-W16000/15X30

USGS
Historical File
Topographic Division

U.S.G.S.
FILE COPY
TOPOGRAPHIC DIVISION

2200
NOV 2 1966