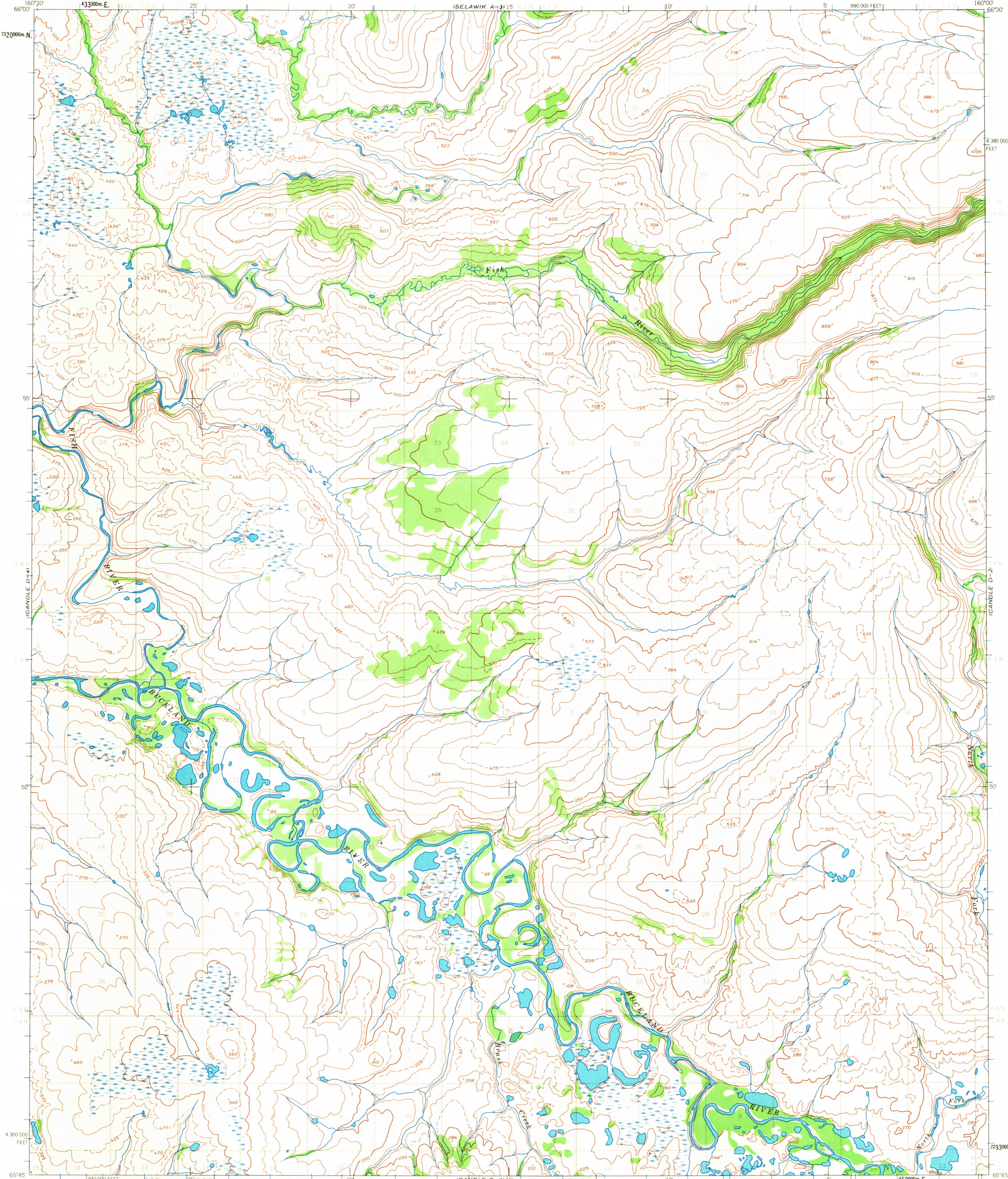


(SELAWIK A-4)

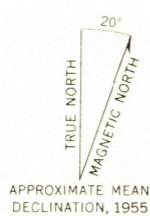
(SELAWIK A-2)



Mapped by the Army Map Service  
Edited and published by the Geological Survey  
Control by USC&GS and USCE

Topography by photogrammetric methods from aerial photographs  
taken 1955, field annotated 1955. Map not field checked  
Universal Transverse Mercator projection, 1927 North American datum  
10,000 foot grid based on Alaska coordinate system, zone 7  
1000 meter Universal Transverse Mercator grid ticks,  
zone 4, shown in blue

Land lines represent unsurveyed and unmarked locations  
determined by the Bureau of Land Management  
Folio K-7, Kateel River Meridian



CONTOUR INTERVAL 50 FEET  
DASHED LINES REPRESENT 25-FOOT CONTOURS  
DATUM IS APPROXIMATE MEAN SEA LEVEL

ROAD CLASSIFICATION  
No roads or trails in this area



FOR SALE BY U. S. GEOLOGICAL SURVEY  
FAIRBANKS, ALASKA 99701, DENVER, COLORADO 80225, OR WASHINGTON, D. C. 20242  
A FOLDER DESCRIBING TOPOGRAPHIC MAPS AND SYMBOLS IS AVAILABLE ON REQUEST

CANDLE (D-3), ALASKA  
N6545-W16000/15X30  
1955

USGS  
Historical File  
Topographic Division

U.S.G.S.  
Topographic Division

2335  
NOV 2 1966