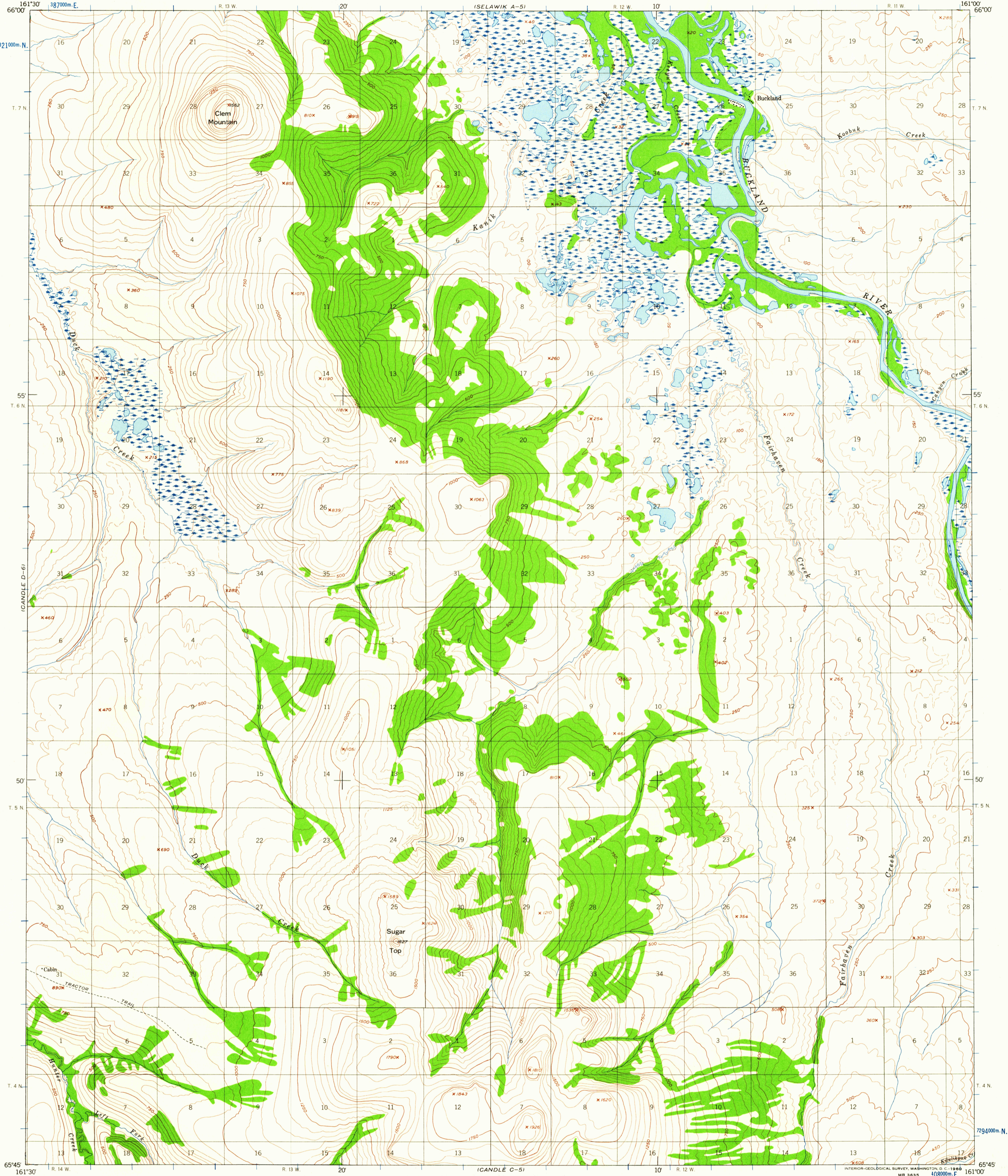


(SELAWIK A-6)

UNITED STATES  
DEPARTMENT OF THE INTERIOR  
GEOLOGICAL SURVEY

UNITED STATES  
DEPARTMENT OF THE ARMY  
CORPS OF ENGINEERS

CANDLE (D-5) QUADRANGLE  
ALASKA  
1:63 360 SERIES (TOPOGRAPHIC)



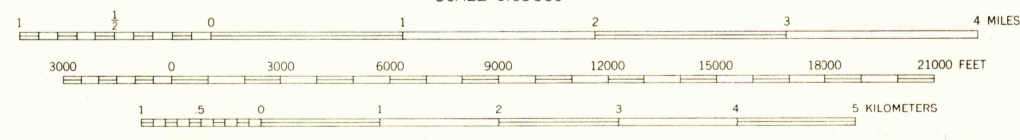
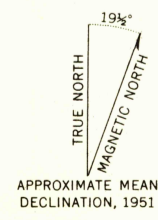
Mapped by the Army Map Service  
Published for civil use by the Geological Survey  
Control by USC&GS

Topography from aerial photographs by photogrammetric methods  
Aerial photographs taken 1949-1951. Map not field checked

Universal Transverse Mercator projection  
1927 North American datum  
1000 meter Universal Transverse Mercator grid ticks,  
zone 4, shown in blue

Land lines represent unsurveyed and unmarked locations  
pre-determined by the Bureau of Land Management  
Folio K7, Kateel Meridian

Unchecked elevations are shown in brown



CONTOUR INTERVAL 50 FEET  
DASHED LINES REPRESENT 25 FOOT CONTOURS  
DATUM IS MEAN SEA LEVEL

FOR SALE BY U. S. GEOLOGICAL SURVEY  
DENVER 25, COLORADO WASHINGTON 25, D. C.

FAIRBANKS, ALASKA

A FOLDER DESCRIBING TOPOGRAPHIC MAPS AND SYMBOLS IS AVAILABLE ON REQUEST



USGS  
FILE COPY  
TOPOGRAPHIC DIVISION

ROAD CLASSIFICATION  
Trails USC&GS  
Historical File  
Topographic Division

CANDLE (D-5), ALASKA  
N6545-W16100/15X30  
1951

OCT 12 1960