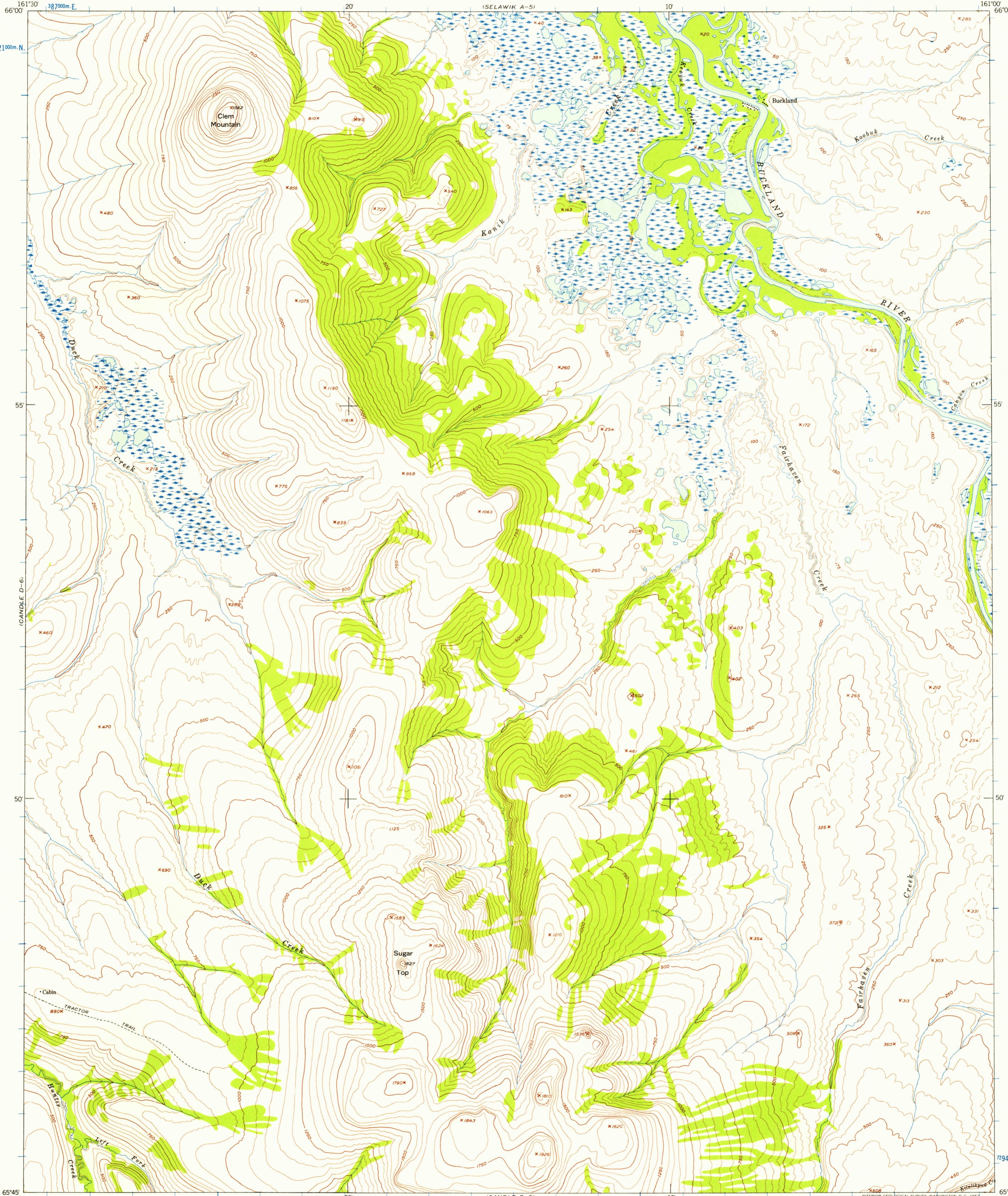


(SELAWIK A-6)

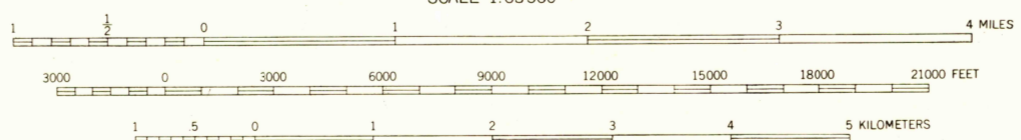
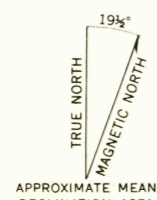
(SELAWIK A-5)



U.S.G.S.  
FILE COPY  
TOPOGRAPHIC DIVISION

U.S.G.S.  
FILE COPY  
TOPOGRAPHIC DIVISION

Maped by the Army Map Service  
Published for civil use by the Geological Survey  
Control by USC&GS  
Topography from aerial photographs by photogrammetric methods  
Aerial photographs taken 1949-1951. Map not field checked  
Universal Transverse Mercator projection  
1927 North American datum  
1000 meter Universal Transverse Mercator grid ticks,  
zone 4, shown in blue  
Unchecked elevations are shown in brown



CONTOUR INTERVAL 50 FEET  
DASHED LINES REPRESENT 25 FOOT CONTOURS  
DATUM IS MEAN SEA LEVEL



ROAD CLASSIFICATION  
Trails USGS  
Historical File  
Topographic Division

CANDLE (D-5), ALASKA  
N6545—W16100/15X30  
1951

FOR SALE BY U.S. GEOLOGICAL SURVEY  
FAIRBANKS, ALASKA DENVER 2, COLORADO WASHINGTON 25, D.C.  
A FOLDER DESCRIBING TOPOGRAPHIC MAPS AND SYMBOLS IS AVAILABLE ON REQUEST

NOV 12 1951  
1925