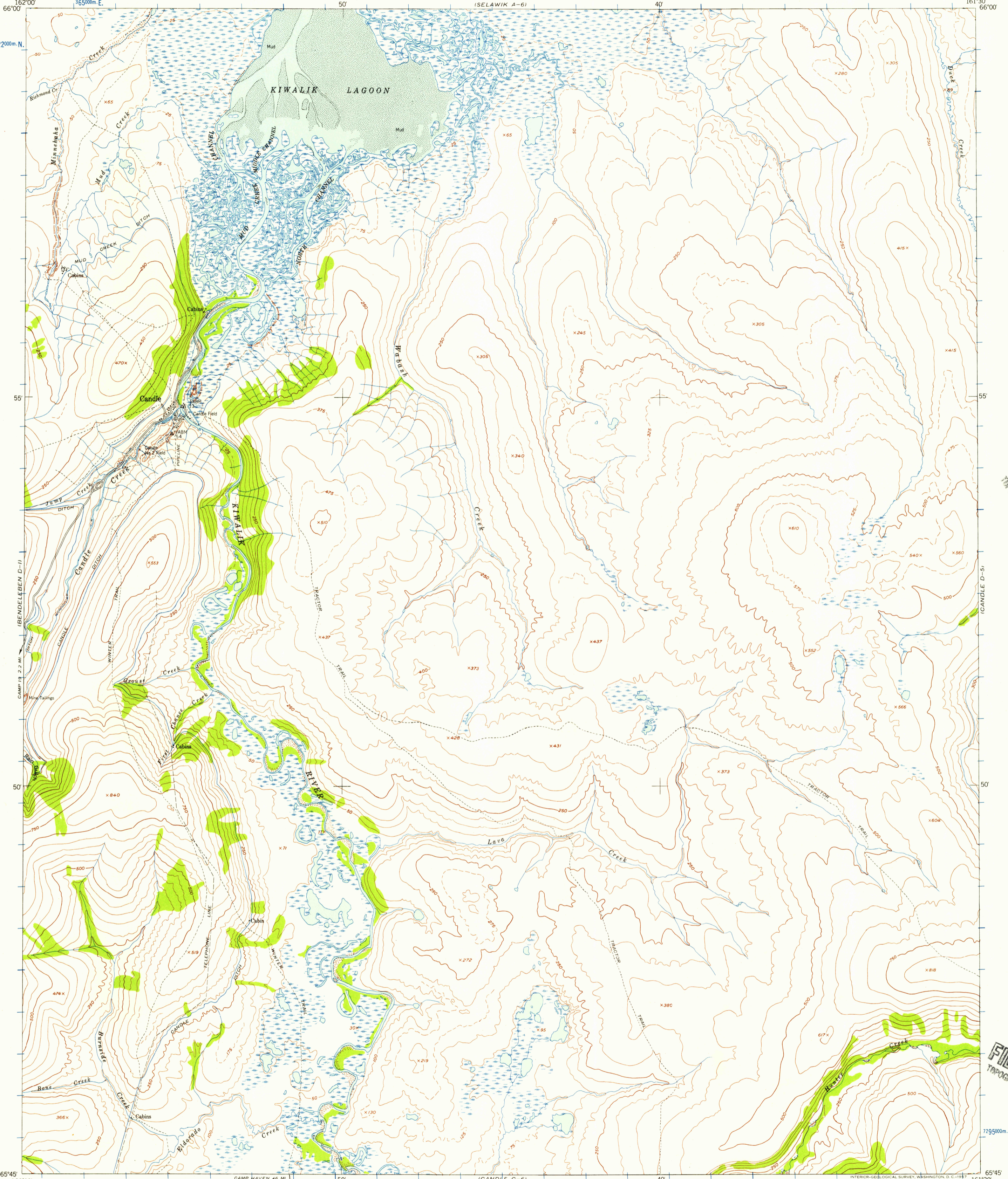


(KOTZEBUE A-1)

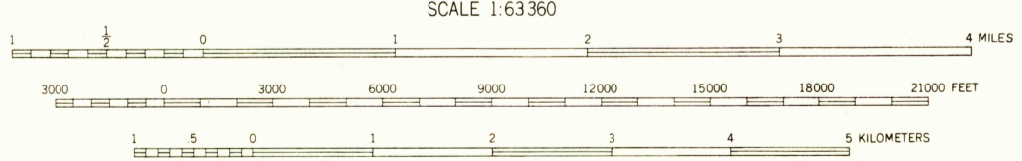
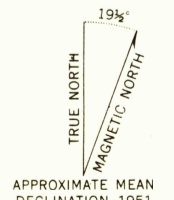
(ISELAWIK A-5)



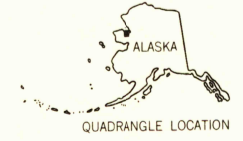
U.S.G.S.
FILE COPY
TOPOGRAPHIC DIVISION

U.S.G.S.
FILE COPY
TOPOGRAPHIC DIVISION

Mapped by the Army Map Service
Published for civil use by the Geological Survey
Control by USC&GS
Topography from aerial photographs by photogrammetric methods
Aerial photographs taken 1949-1951. Map not field checked
Universal Transverse Mercator projection
1927 North American datum
1000-meter Universal Transverse Mercator grid ticks,
zone 4, shown in blue
Unchecked elevations are shown in brown



CONTOUR INTERVAL 50 FEET
DASHED LINES REPRESENT 25 FOOT CONTOURS
DATUM IS MEAN SEA LEVEL
SHORELINE SHOWN REPRESENTS THE APPROXIMATE LINE OF MEAN HIGH WATER
THE AVERAGE RANGE OF TIDE IS APPROXIMATELY 2 FEET
FOR SALE BY U.S. GEOLOGICAL SURVEY
FAIRBANKS, ALASKA DENVER 2, COLORADO WASHINGTON 25, D.C.
A FOLDER DESCRIBING TOPOGRAPHIC MAPS AND SYMBOLS IS AVAILABLE ON REQUEST



ROAD CLASSIFICATION
Light duty — Trails

CANDLE (D-6), ALASKA
N6545-W16130/15X30
1951

USGS
Historical File
Topographic Division

NOV 12 1957
1935