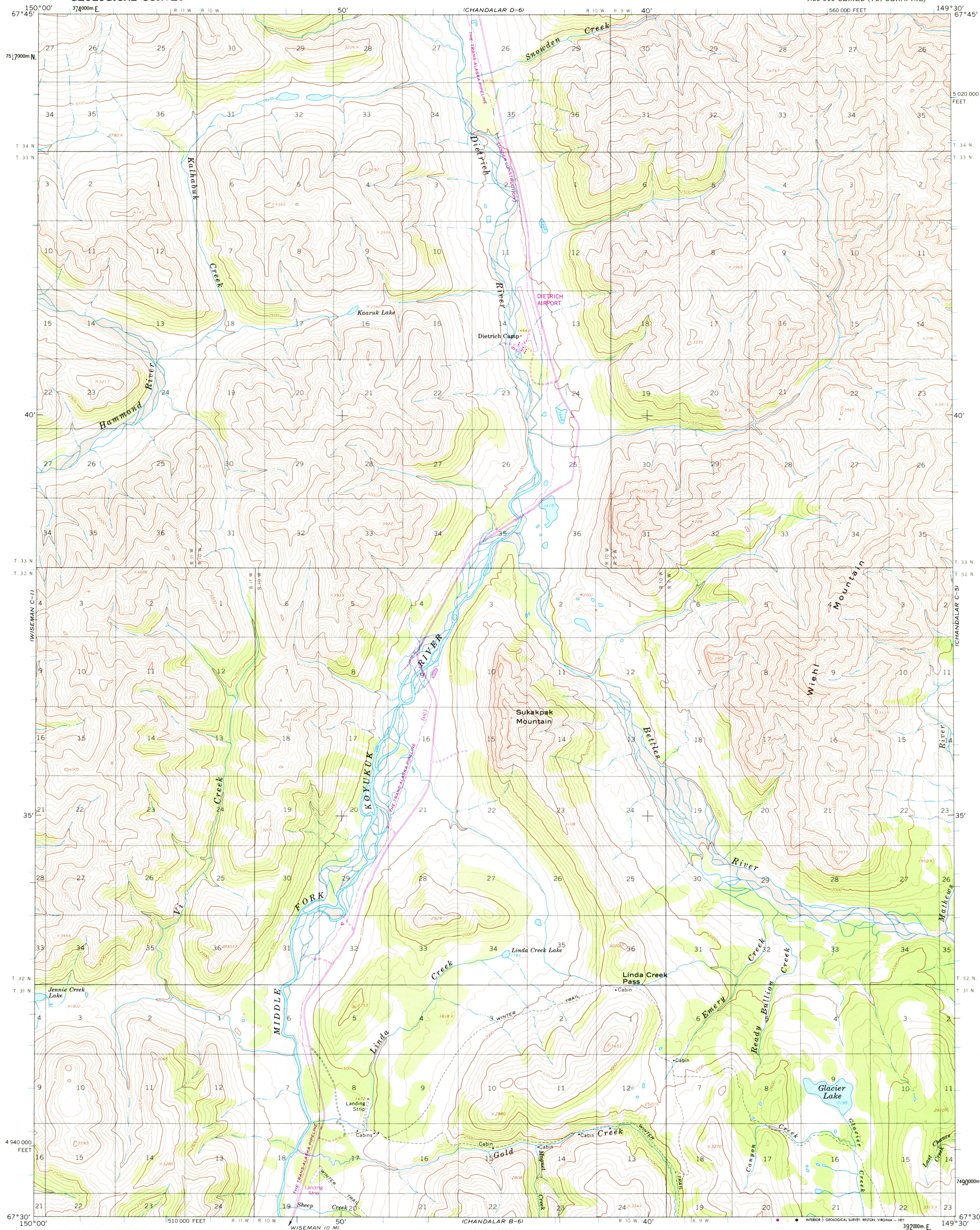
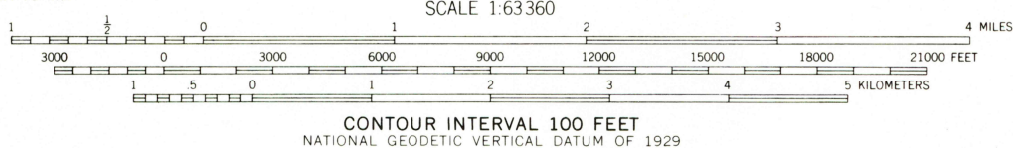
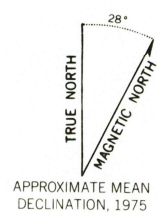


UNITED STATES  
DEPARTMENT OF THE INTERIOR  
GEOLOGICAL SURVEY

CHANDALAR (C-6) QUADRANGLE  
ALASKA  
1:63 360 SERIES (TOPOGRAPHIC)



Mapped, edited, and published by the Geological Survey  
Control by USGS and USC&GS.  
Topography by photogrammetric methods from aerial photographs  
taken 1970, field annotated 1971. Map not field checked  
Projection and 1000-meter grid ticks: Universal  
Transverse Mercator, zone 6  
10,000-foot grid ticks based on Alaska coordinate  
system, zone 4. 1927 North American datum  
Land lines represent unsurveyed and unmarked locations  
determined by the Bureau of Land Management  
Folio F-3, Fairbanks Meridian  
Revisions shown in purple compiled from aerial photographs  
taken 1975. This information not field checked



FOR SALE BY U.S. GEOLOGICAL SURVEY  
FAIRBANKS, ALASKA 99701, DENVER, COLORADO 80225, OR RESTON, VIRGINIA 22092  
A FOLDER DESCRIBING TOPOGRAPHIC MAPS AND SYMBOLS IS AVAILABLE ON REQUEST



ROAD CLASSIFICATION  
Light-duty ————— Unimproved dirt =

CHANDALAR (C-6), ALASKA  
N6730—W14930/15 X 30

1971  
PHOTOREVISED 1975

4850  
SEP 26 1977

USGS  
Historical File  
Topographic Division