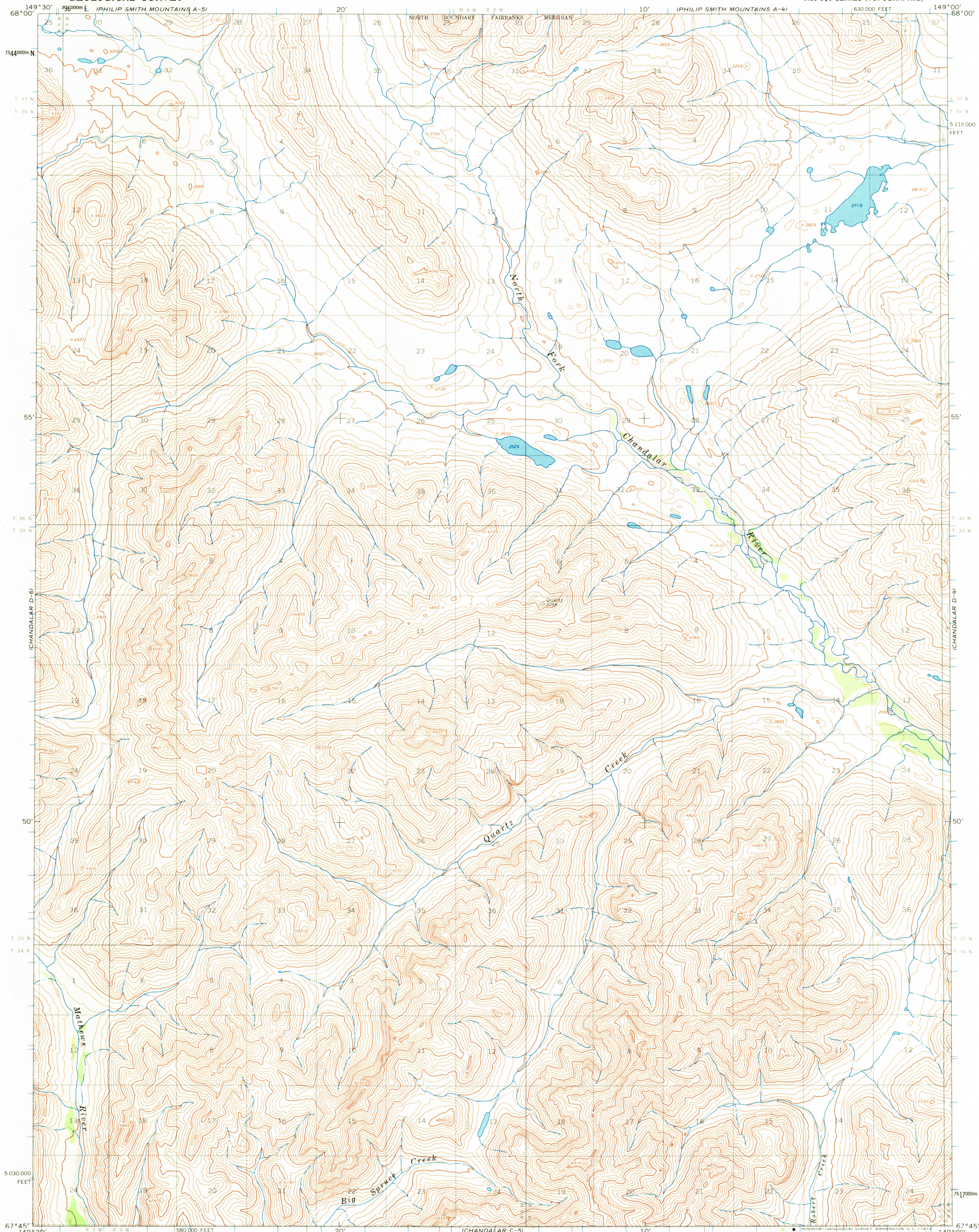
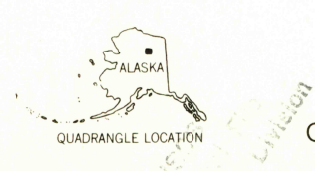
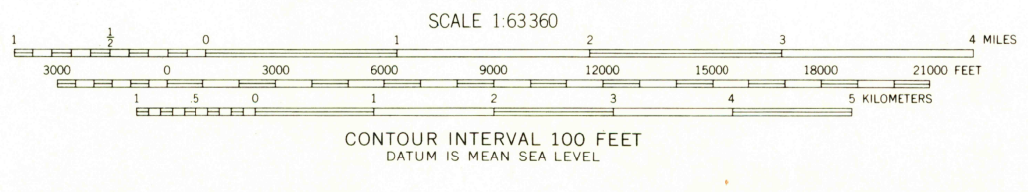
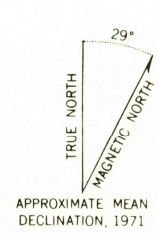


UNITED STATES
DEPARTMENT OF THE INTERIOR
GEOLOGICAL SURVEY

CHANDALAR (D-5) QUADRANGLE
ALASKA
1:63 360 SERIES (TOPOGRAPHIC)



Mapped, edited, and published by the Geological Survey
Control by USGS and USC&GS
Topography by photogrammetric methods from aerial photographs
taken 1970, field annotated 1971. Map not field checked
Projection and 1000-meter grid ticks: Universal
Transverse Mercator, zone 6
10,000-foot grid ticks based on Alaska coordinate
system, zone 4. 1927 North American datum
Land lines represent unsurveyed and unmarked locations
pre-determined by the Bureau of Land Management
Folio F-3, Fairbanks Meridian



ROAD CLASSIFICATION
No roads or trails in this area
SEP 24 1973

FOR SALE BY U. S. GEOLOGICAL SURVEY
FAIRBANKS, ALASKA 99701, DENVER, COLORADO 80225, OR WASHINGTON, D. C. 20242
A FOLDER DESCRIBING TOPOGRAPHIC MAPS AND SYMBOLS IS AVAILABLE ON REQUEST

CHANDALAR (D-5), ALASKA
N6745—W14900/15 X 30
1971

3650