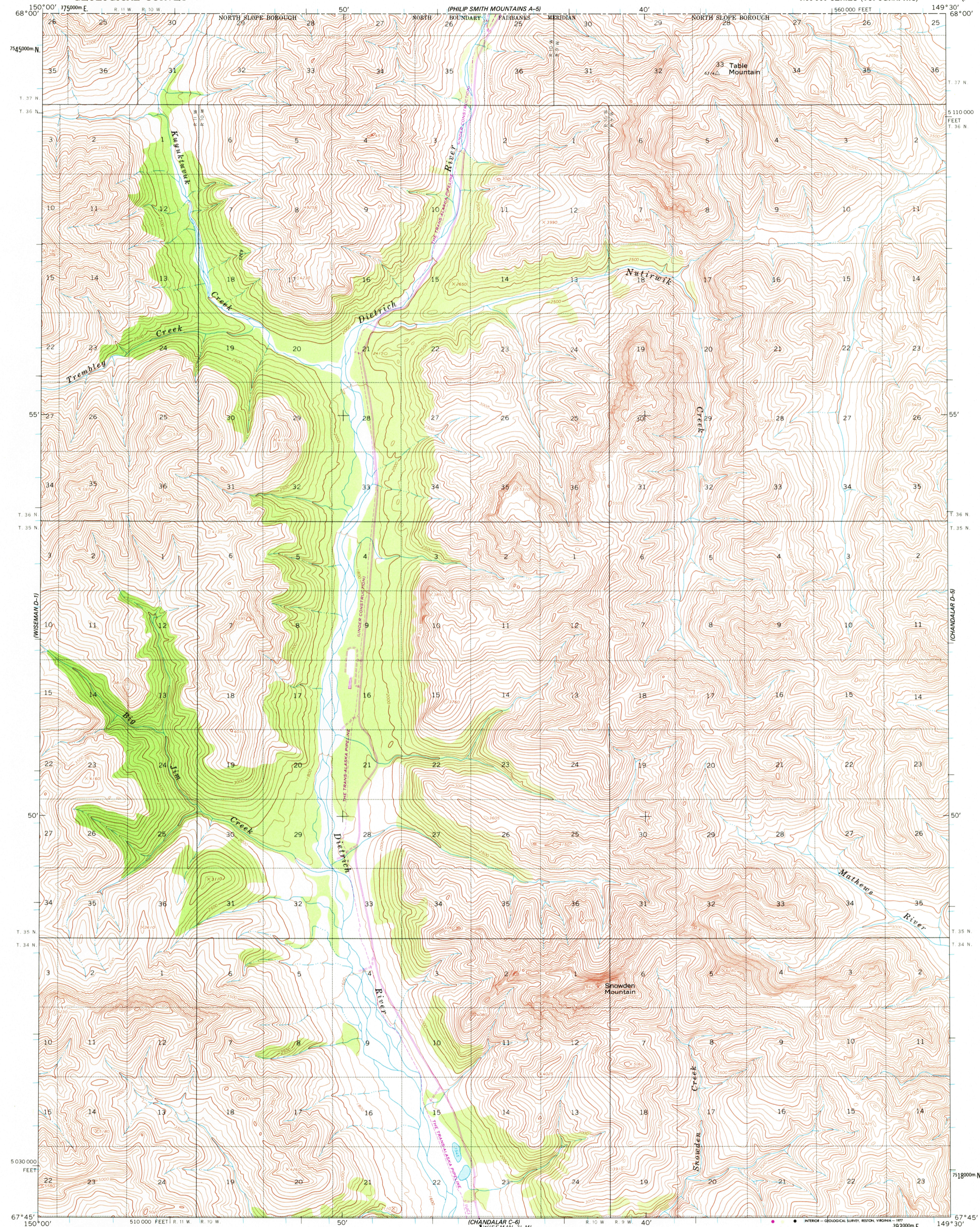


UNITED STATES
DEPARTMENT OF THE INTERIOR
GEOLOGICAL SURVEY

CHANDALAR (D-6) QUADRANGLE
ALASKA

1:63 360 SERIES (TOPOGRAPHIC)



Mapped, edited, and published by the Geological Survey

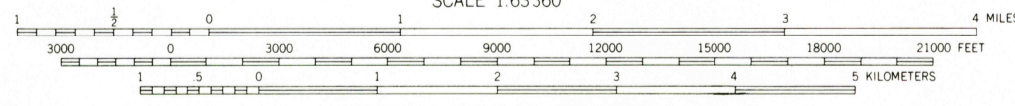
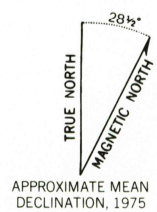
Control by USGS and USC&GS

Topography by photogrammetric methods from aerial photographs taken 1970, field annotated 1971. Map not field checked

Projection and 1000-meter grid ticks: Universal Transverse Mercator, zone 6
10,000-foot grid ticks based on Alaska coordinate system, zone 4. 1927 North American datum

Land lines represent unsurveyed and unmarked locations predetermined by the Bureau of Land Management Folio F-3, Fairbanks Meridian

Revisions shown in purple compiled from aerial photographs taken 1975. This information not field checked



CONTOUR INTERVAL 100 FEET
NATIONAL GEODETIC VERTICAL DATUM OF 1929



ROAD CLASSIFICATION
Light-duty ————— Unimproved dirt - - - - -

FOR SALE BY U.S. GEOLOGICAL SURVEY
FAIRBANKS, ALASKA 99701, DENVER, COLORADO 80225, OR RESTON, VIRGINIA 22092
A FOLDER DESCRIBING TOPOGRAPHIC MAPS AND SYMBOLS IS AVAILABLE ON REQUEST

CHANDALAR (D-6), ALASKA
N6745-W14930/15X30

1971
PHOTOREVISED 1975
USGS
Historical File
Topographic Division

4850
SEP 26 1977