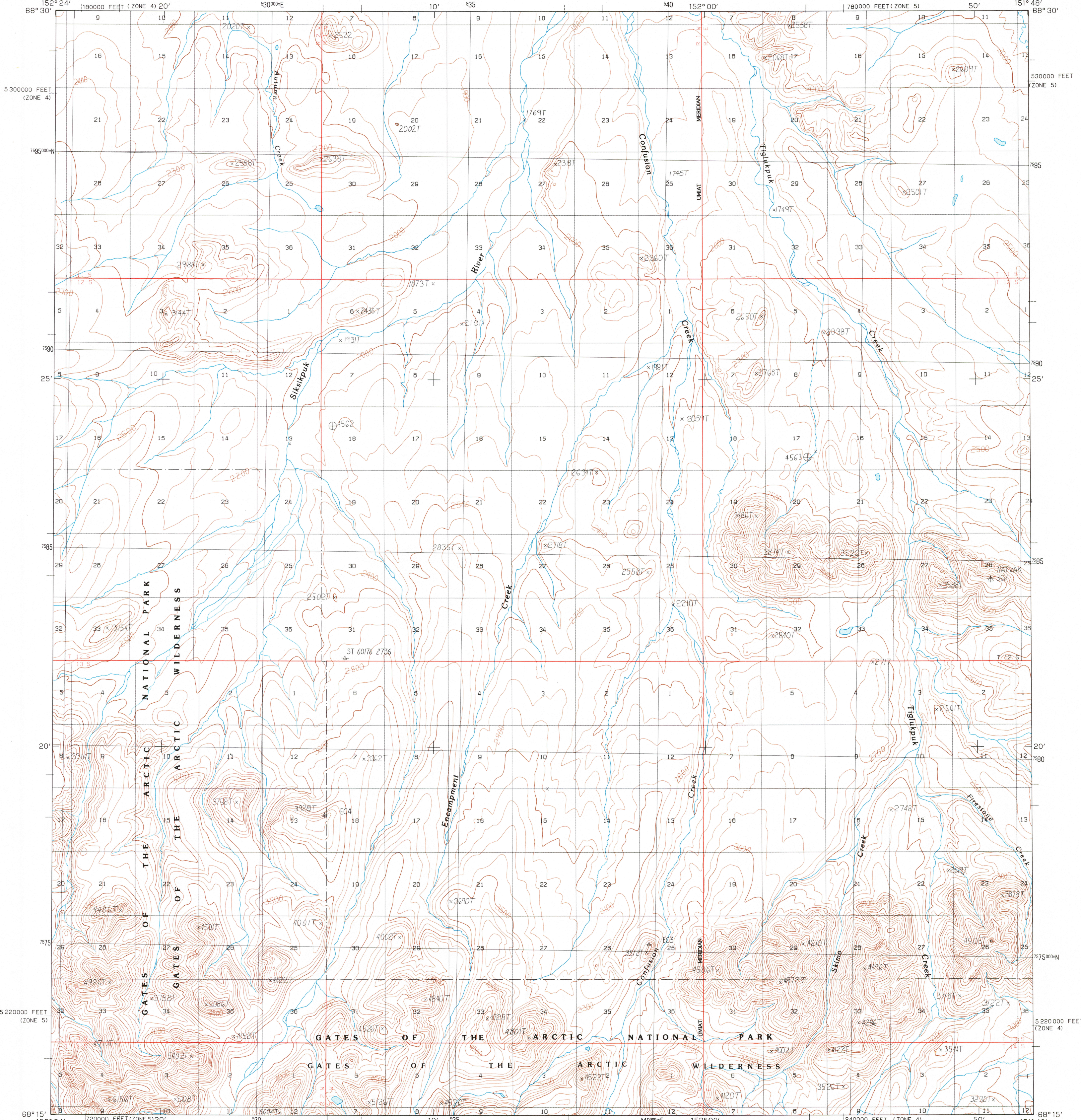


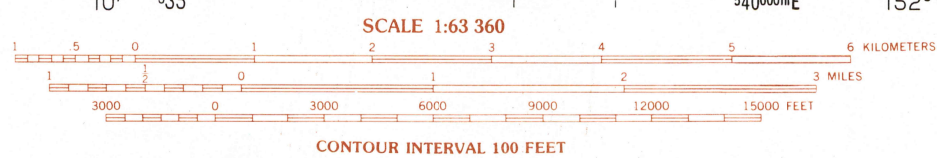
UNITED STATES  
DEPARTMENT OF THE INTERIOR  
GEOLOGICAL SURVEY

CHANDLER LAKE (B-4) QUADRANGLE  
ALASKA-NORTH SLOPE BOROUGH  
1:63 360 SERIES (TOPOGRAPHIC)

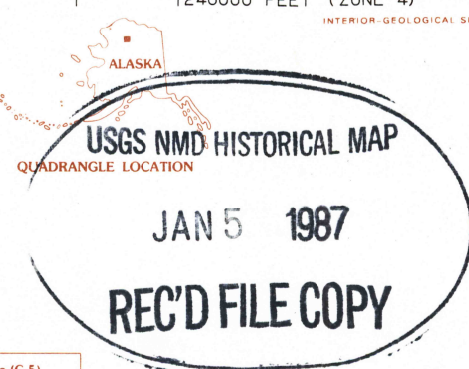


PRODUCED BY THE UNITED STATES GEOLOGICAL SURVEY  
CONTROL BY ..... USGS, NOS/NOAA AND BLM  
COMPILED FROM AERIAL PHOTOGRAPHS TAKEN ..... 1982  
MAP NOT FIELD CHECKED. MAP EDITED ..... 1987  
PROJECTION ..... UNIVERSAL TRANSVERSE MERCATOR  
GRID: 5000-METER UNIVERSAL TRANSVERSE MERCATOR  
20,000-FOOT STATE GRID TICS  
UTM GRID DECLINATION ..... ALASKA, ZONES 5 AND 4  
1987 MAGNETIC NORTH DECLINATION ..... 26°05' EAST  
VERTICAL DATUM ..... NATIONAL GEODETIC VERTICAL DATUM OF 1929  
HORIZONTAL DATUM ..... 1927 NORTH AMERICAN DATUM  
To place on the predicted North American Datum of 1983, move the  
projection lines 50 meters north and 121 meters east  
Gray land lines represent unsurveyed and unmarked locations predeter-  
mined by the Bureau of Land Management, Folios U-10 and U-11,  
Umiat Meridian  
There may be private inholdings within the boundaries of any Federal  
or State Reservations shown on this map  
Federal Reservation boundaries established by the Alaska National  
Interest Lands Conservation Act, PL 96-487, Dec. 2, 1980, are shown  
as compiled by the administering agencies

PROVISIONAL MAP  
Produced from original  
manuscript drawings. In-  
formation shown as of date  
of photography 2



To convert meters to feet multiply by 3.2808  
To convert feet to meters multiply by .3048



ROAD LEGEND  
No roads or trails in this area

1	2	3	1	Chandler Lake (C-5)
2			2	Chandler Lake (C-4)
3			3	Chandler Lake (C-3)
4			4	Chandler Lake (B-5)
5			5	Chandler Lake (B-3)
6			6	Chandler Lake (A-5)
7			7	Chandler Lake (A-4)
8			8	Chandler Lake (A-3)

ADJOINING QUADRANGLE NAMES

CHANDLER LAKE (B-4), ALASKA  
PROVISIONAL EDITION 1987

68151-C7-TF-063

FOR SALE BY U.S. GEOLOGICAL SURVEY, FAIRBANKS, ALASKA 99701  
DENVER, COLORADO 80225, OR RESTON, VIRGINIA 22092