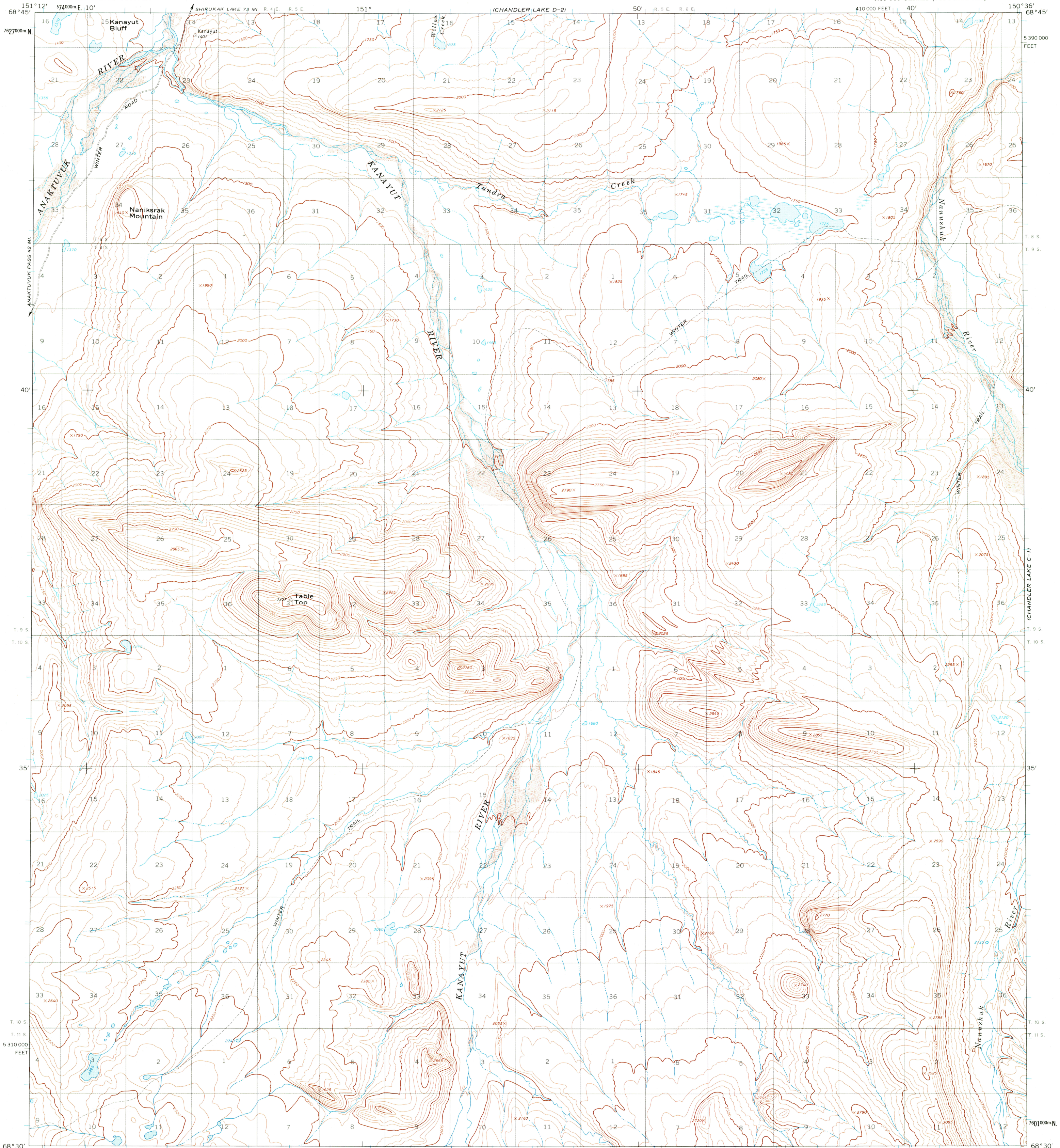
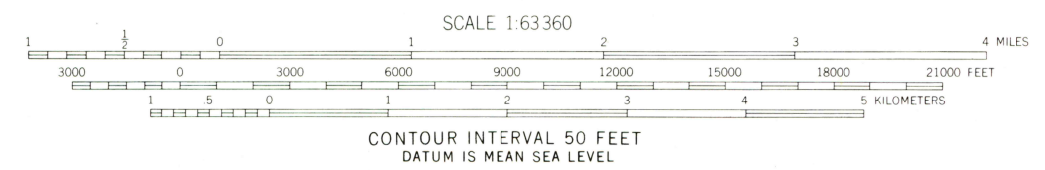
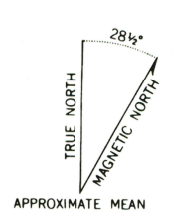


CHANDLER LAKE D-11



Mapped, edited, and published by the Geological Survey  
Control by USGS and USC&GS  
Topography by photogrammetric methods from aerial photographs  
taken 1970, field annotated 1971. Map not field checked  
Projection and 1,000-meter grid ticks: Universal  
Transverse Mercator, zone 5  
10,000-foot grid ticks based on Alaska coordinate  
system, zone 4. 1927 North American datum  
Land lines represent unsurveyed and unmarked locations  
predetermined by the Bureau of Land Management  
Folio U-11, Umiat Meridian  
Swamps as portrayed, indicate only the wetter areas,  
usually of low relief, as interpreted from aerial photographs



ROAD CLASSIFICATION  
Unimproved road

OCT 11 1973

CHANDLER LAKE (C-2), ALASKA  
N6830-W15036/15 X 36

FOR SALE BY U. S. GEOLOGICAL SURVEY  
FAIRBANKS, ALASKA 99701, DENVER, COLORADO 80225, OR WASHINGTON, D. C. 20242  
A FOLDER DESCRIBING TOPOGRAPHIC MAPS AND SYMBOLS IS AVAILABLE ON REQUEST

1971

USGS  
Historical File  
Topographic Division

3870