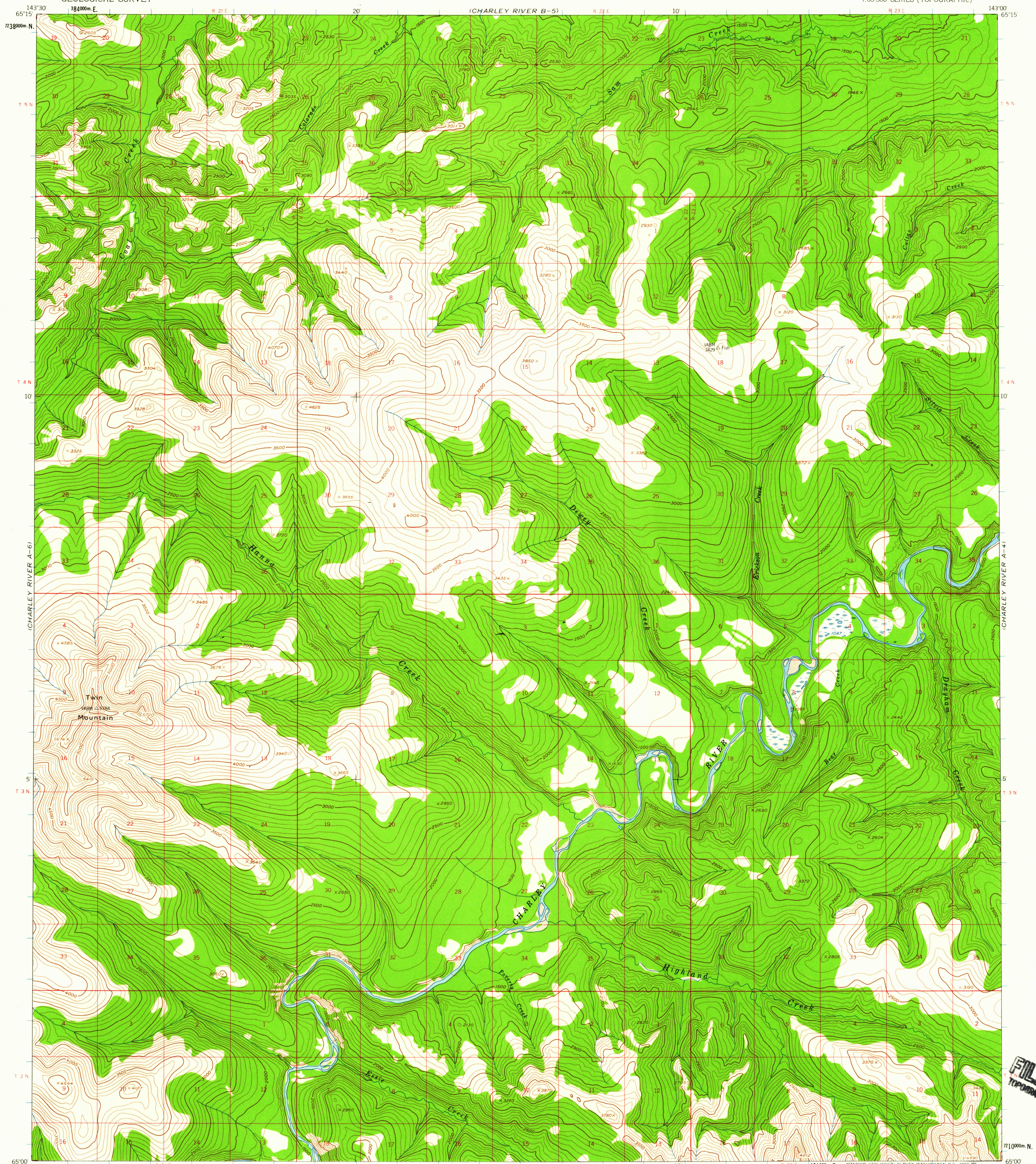


CHARLEY RIVER B-6)

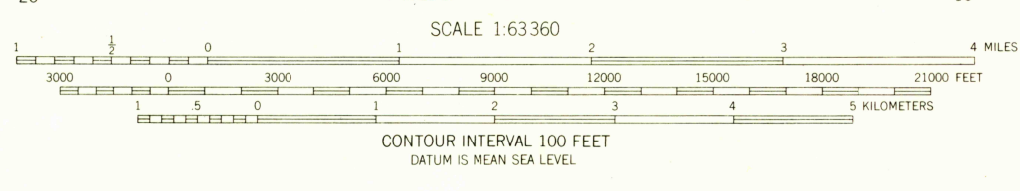
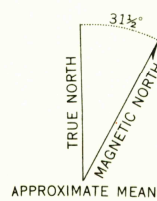
UNITED STATES
DEPARTMENT OF THE INTERIOR
GEOLOGICAL SURVEY

CHARLEY RIVER (A-5) QUADRANGLE
ALASKA
1:63 360 SERIES (TOPOGRAPHIC)

CHARLEY RIVER B-4)



Mapped, edited, and published by the Geological Survey
Control by USGS and USC&GS
Topography from aerial photographs by photogrammetric methods 1958. Aerial photographs taken 1951 and 1954 field annotated 1956. Map not field checked
Universal Transverse Mercator projection
1927 North American datum
1000-meter Universal Transverse Mercator grid ticks, zone 7, shown in blue
Land lines represent unsurveyed and unmarked locations predetermined by the Bureau of Land Management. Folio F-8
Swamps, as portrayed, indicate only the wetter areas, usually of low relief as interpreted from aerial photographs
Unchecked elevations are shown in brown and blue



FOR SALE BY U.S. GEOLOGICAL SURVEY
FAIRBANKS, ALASKA DENVER 25, COLORADO WASHINGTON 25, D.C.
A FOLDER DESCRIBING TOPOGRAPHIC MAPS AND SYMBOLS IS AVAILABLE ON REQUEST



USGS
Historical File
Topographic Division
ROAD CLASSIFICATION
No roads or trails in this area

CHARLEY RIVER (A-5), ALASKA
N6500-W14300/15X30
1956

U.S.G.S.
FILE COPY
TOPOGRAPHIC DIVISION

MAY 17 1960

2490