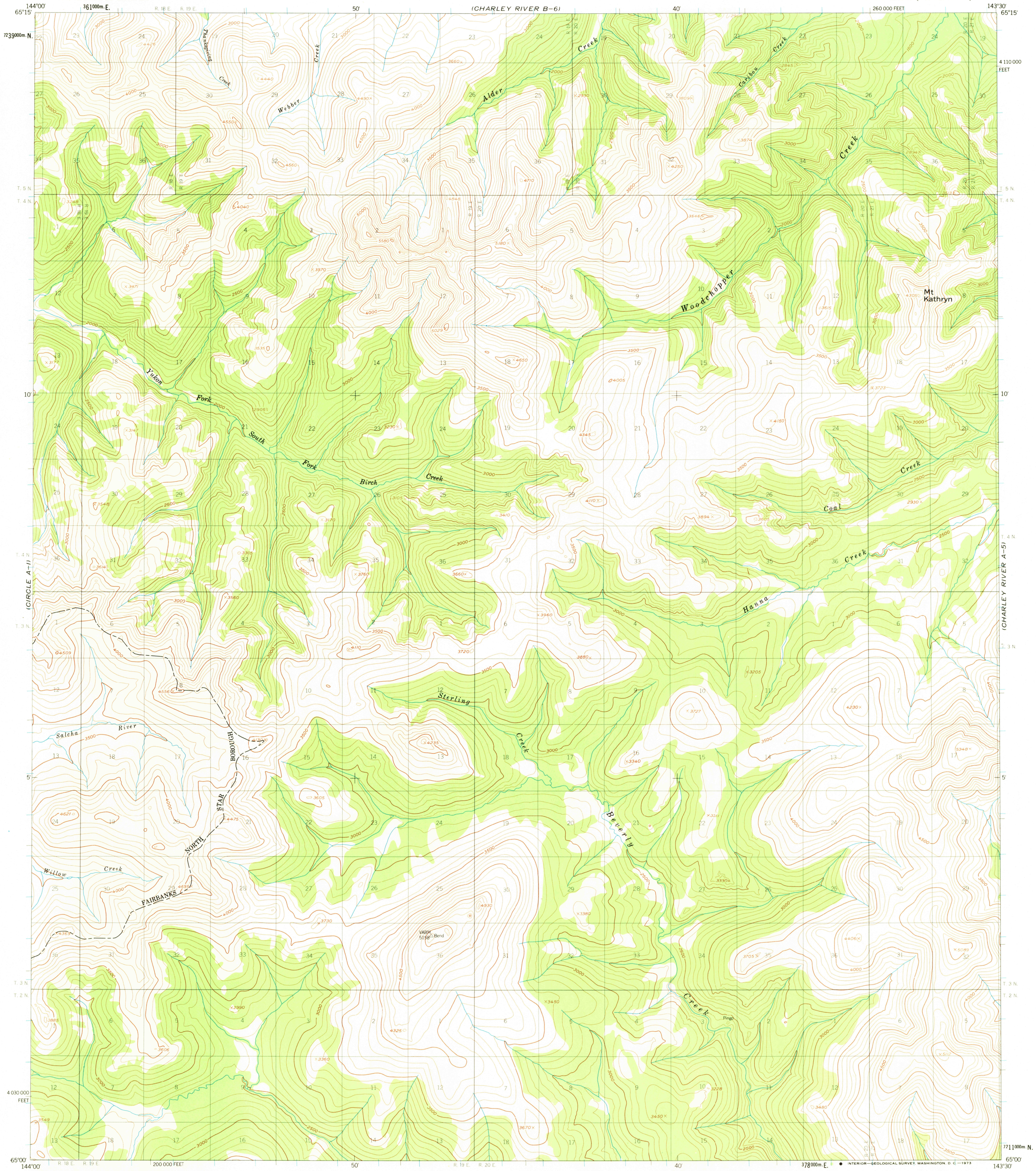


(CIRCLE B-1)

UNITED STATES
DEPARTMENT OF THE INTERIOR
GEOLOGICAL SURVEY

CHARLEY RIVER (A-6) QUADRANGLE
ALASKA
1:63 360 SERIES (TOPOGRAPHIC)

(CHARLEY RIVER B-5)

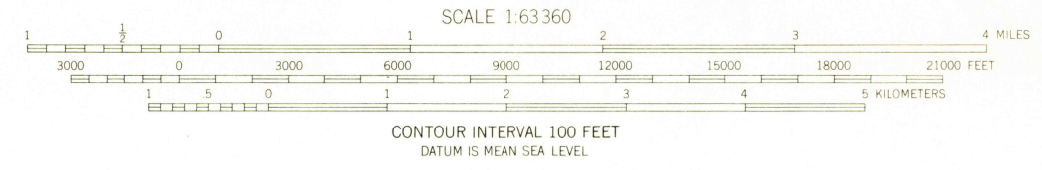
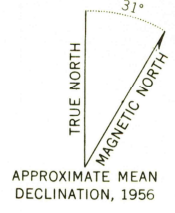


Mapped, edited, and published by the Geological Survey
Control by USGS

Topography by photogrammetric methods from aerial photographs
taken 1951, field annotated 1956. Map not field checked

Universal Transverse Mercator projection, 1927 North American datum
10,000-foot grid based on Alaska coordinate system, zone 2
1000-meter Universal Transverse Mercator grid ticks,
zone 7, shown in blue

Land lines represent unsurveyed and unmarked locations
predetermined by the Bureau of Land Management
Folio F-8, Fairbanks Meridian



ROAD CLASSIFICATION
No roads or trails in this area

JUL 17 1956

FOR SALE BY U. S. GEOLOGICAL SURVEY
FAIRBANKS, ALASKA 99701, DENVER, COLORADO 80225, OR WASHINGTON, D. C. 20242
A FOLDER DESCRIBING TOPOGRAPHIC MAPS AND SYMBOLS IS AVAILABLE ON REQUEST

CHARLEY RIVER (A-6), ALASKA
N6500-W14330/15X30

USGS
Historical File
Topographic Division

1956
MAJOR REVISIONS 1972

24410