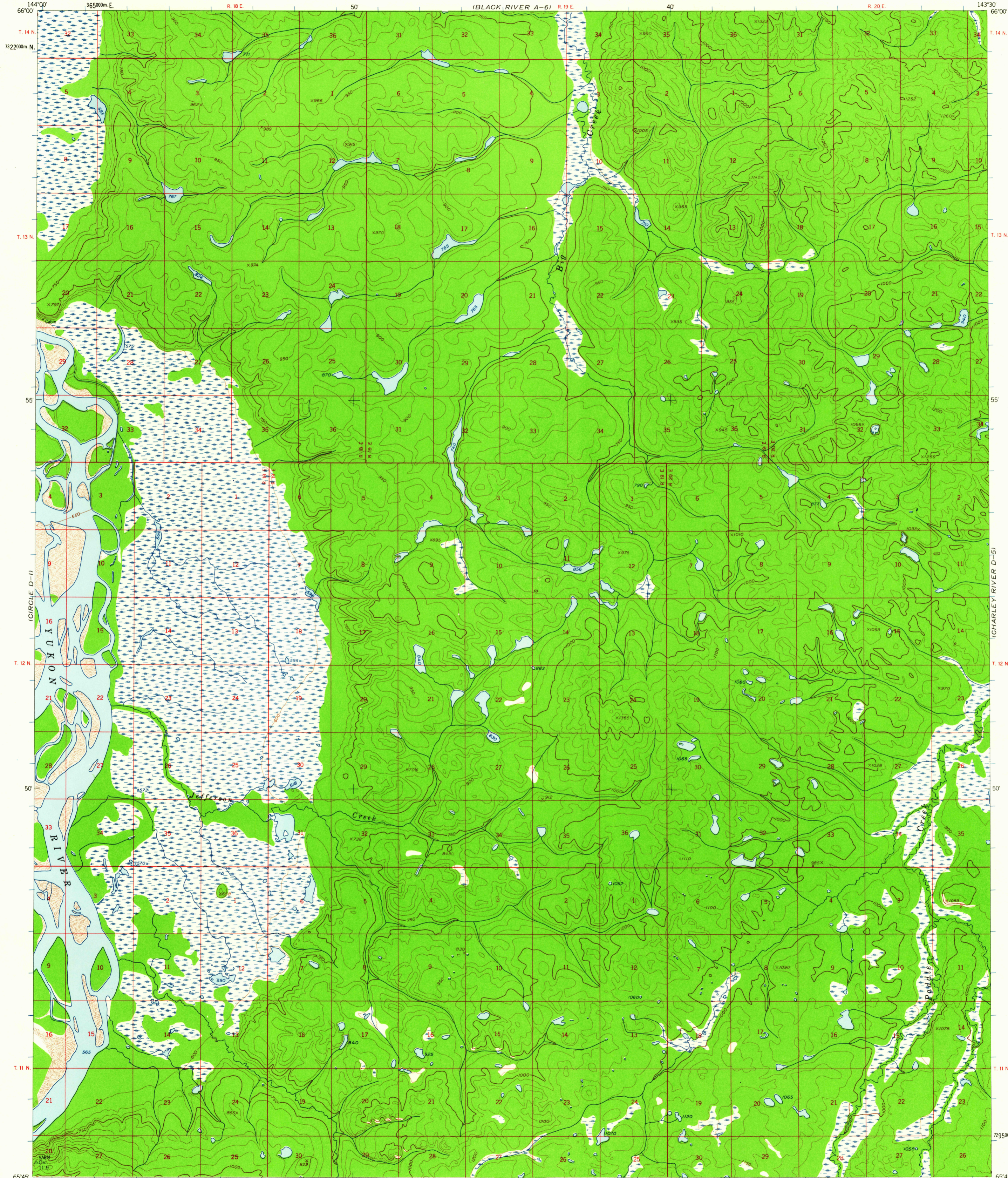


(FORT YUKON A-1)

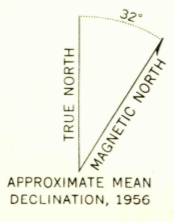
UNITED STATES  
DEPARTMENT OF THE INTERIOR  
GEOLOGICAL SURVEY

CHARLEY RIVER (D-6) QUADRANGLE  
ALASKA  
1:63 360 SERIES (TOPOGRAPHIC)

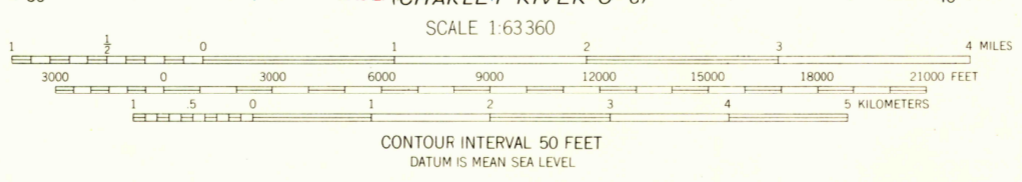
(BLACK RIVER A-5)



Maped, edited, and published by the Geological Survey  
Control by USGS and USC&GS  
Topography from aerial photographs by photogrammetric  
methods 1958. Aerial photographs taken 1951,  
field annotated 1956. Map not field checked  
Universal Transverse Mercator projection  
1927 North American datum  
1000-meter Universal Transverse Mercator grid ticks,  
zone 7, shown in blue  
Land lines represent unsurveyed and unmarked locations  
pre-determined by the Bureau of Land Management  
Fairbanks Meridian, Folio F-8  
Swamps, as portrayed, indicate only the wetter areas,  
usually of low relief as interpreted from aerial photographs  
Unchecked elevations are shown in brown and blue



APPROXIMATE MEAN  
DECLINATION, 1956



FOR SALE BY U.S. GEOLOGICAL SURVEY  
FAIRBANKS, ALASKA DENVER 25, COLORADO WASHINGTON 25, D.C.  
A FOLDER DESCRIBING TOPOGRAPHIC MAPS AND SYMBOLS IS AVAILABLE ON REQUEST



QUADRANGLE LOCATION

USGS  
Historical File  
Topographic Division

ROAD CLASSIFICATION  
No roads or trails in this area

CHARLEY RIVER (D-6), ALASKA  
N6545-W14330/15X30  
1956

AUG - 3 1960  
2470