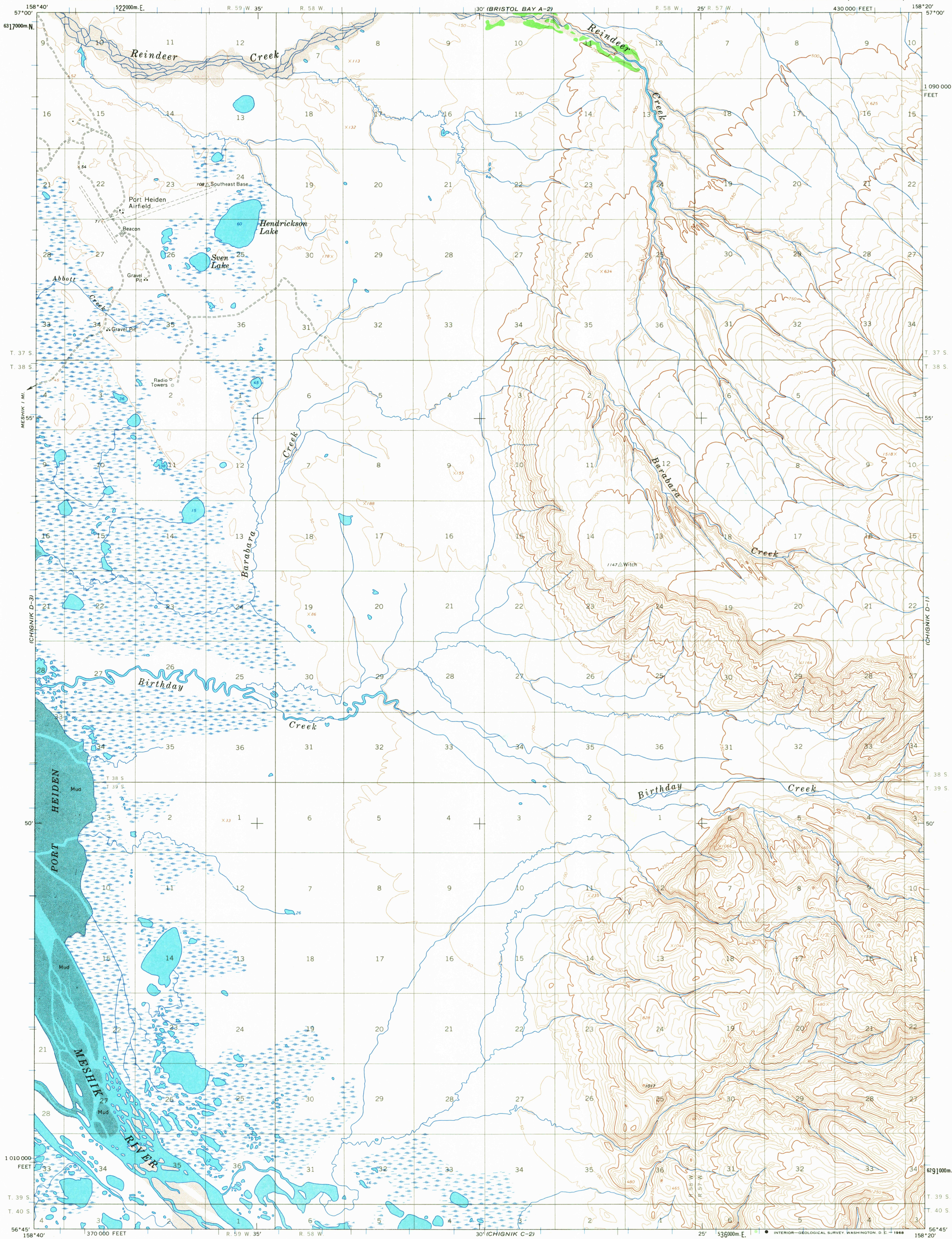


UNITED STATES
DEPARTMENT OF THE INTERIOR
GEOLOGICAL SURVEY

CHIGNIK (D-2) QUADRANGLE
ALASKA
1:63 360 SERIES (TOPOGRAPHIC)

BRISTOL BAY A-11



Mapped, edited, and published by the Geological Survey

Control by USGS and USC&GS

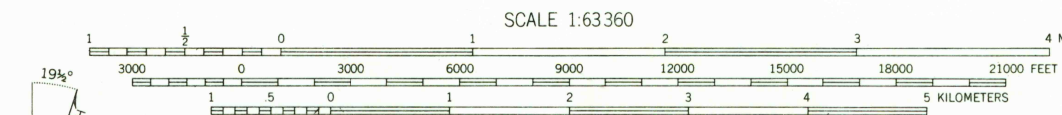
Topography by photogrammetric methods from aerial photographs taken 1957 and 1962, field annotated 1963. Map not field checked

Selected hydrographic data compiled from USC&GS Chart 8834 (1964). This information is not intended for navigational purposes

Universal Transverse Mercator projection. 1927 North American datum 10,000-foot grid based on Alaska coordinate system, zone 6 1000-meter Universal Transverse Mercator grid ticks, zone 4, shown in blue

Land lines represent unsurveyed and unmarked locations predetermined by the Bureau of Land Management Folio S-26, Seward Meridian

Swamps, as portrayed, indicate only the wetter areas, usually of low relief, as interpreted from aerial photographs



CONTOUR INTERVAL 50 FEET
DATUM IS MEAN SEA LEVEL
SHORELINE SHOWN REPRESENTS THE APPROXIMATE LINE OF MEAN HIGH WATER
THE MEAN RANGE OF TIDE IS APPROXIMATELY 7 FEET

FOR SALE BY U. S. GEOLOGICAL SURVEY
FAIRBANKS, ALASKA 99701, DENVER, COLORADO 80225, OR WASHINGTON, D. C. 20242
A FOLDER DESCRIBING TOPOGRAPHIC MAPS AND SYMBOLS IS AVAILABLE ON REQUEST

U.S.G.S.

FILE COPY
TOPOGRAPHIC DIVISION

ROAD CLASSIFICATION
Unimproved dirt -----

USCS
Historical File
Topographic Division

CHIGNIK (D-2), ALASKA
N5645-W15820/15X20

1963

3260

MAR 19 1968