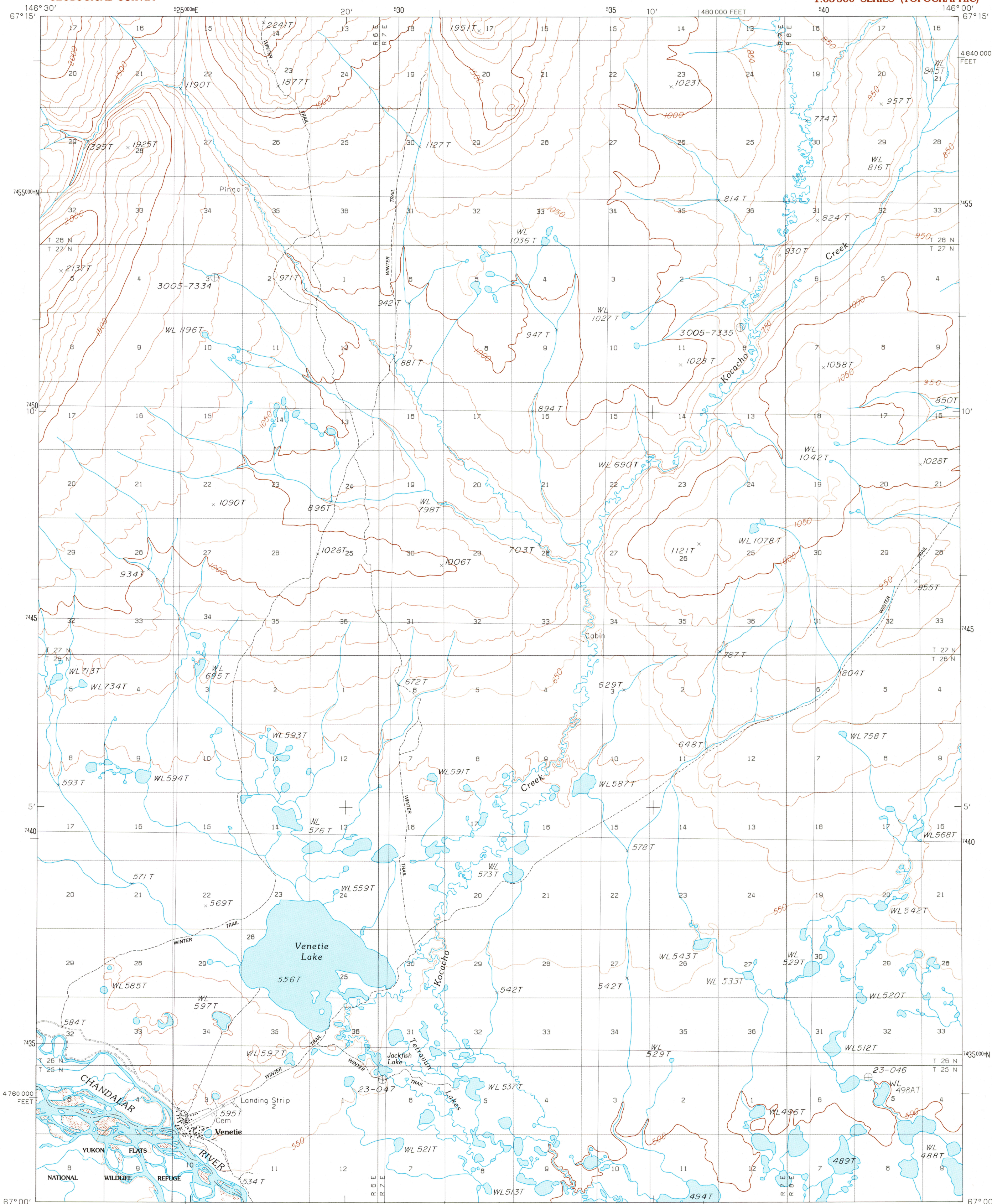


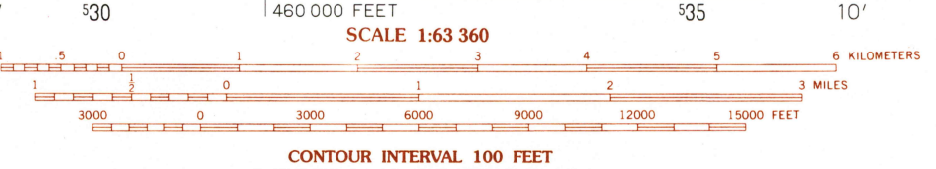
UNITED STATES  
DEPARTMENT OF THE INTERIOR  
GEOLOGICAL SURVEY

CHRISTIAN (A-5) QUADRANGLE  
ALASKA  
1:63 360 SERIES (TOPOGRAPHIC)



PRODUCED BY THE UNITED STATES GEOLOGICAL SURVEY  
CONTROL BY ..... USGS NOS/NOAA  
COMPILED FROM AERIAL PHOTOGRAPHS TAKEN ..... 1980 AND 1981  
MAP NOT FIELD CHECKED. MAP EDITED ..... 1990  
PROJECTION ..... UNIVERSAL TRANSVERSE MERCATOR  
GRID: 5000-METER UNIVERSAL TRANSVERSE MERCATOR ..... ZONE 6  
20,000-FOOT STATE GRID TICKS ..... ALASKA, ZONE 3  
UTM GRID DECLINATION ..... 0°41' EAST  
1990 MAGNETIC NORTH DECLINATION ..... 29°30' EAST  
VERTICAL DATUM ..... NATIONAL GEODETIC VERTICAL DATUM OF 1929  
HORIZONTAL DATUM ..... 1927 NORTH AMERICAN DATUM  
To place on the predicted North American Datum of 1983, move  
the projection line 41 meters north and 116 meters east  
Land lines represent unsurveyed and unmarked locations prede-  
termined by the Bureau of Land Management, Folio F-2, Fairbanks  
Meridian  
There may be private inholdings within the boundaries of any  
Federal or State Reservations shown on this map  
Federal Reservation boundaries established by the Alaska National  
Interest Lands Conservation Act, PL 96-487, Dec. 2, 1980, are  
shown as compiled by the administering agencies

**PROVISIONAL MAP**  
Produced from original  
manuscript drawings. In-  
formation shown as of date  
of photography



To convert meters to feet multiply by 3.2808  
To convert feet to meters multiply by .3048



**ROAD LEGEND**  
Unimproved Road .....  
Trail .....

1	2	3	1 Christian (B-6)
			2 Christian (B-5)
			3 Christian (B-4)
4		5	4 Christian (A-6)
			5 Christian (A-4)
			6 Fort Yukon (D-6)
6	7	8	7 Fort Yukon (D-5)
			8 Fort Yukon (D-4)

ADJOINING QUADRANGLE NAMES

**CHRISTIAN (A-5), ALASKA**  
PROVISIONAL EDITION 1990  
67146-A1-TF-063

FOR SALE BY U.S. GEOLOGICAL SURVEY, FAIRBANKS, ALASKA 99701  
DENVER, COLORADO 80225, OR RESTON, VIRGINIA 22092

