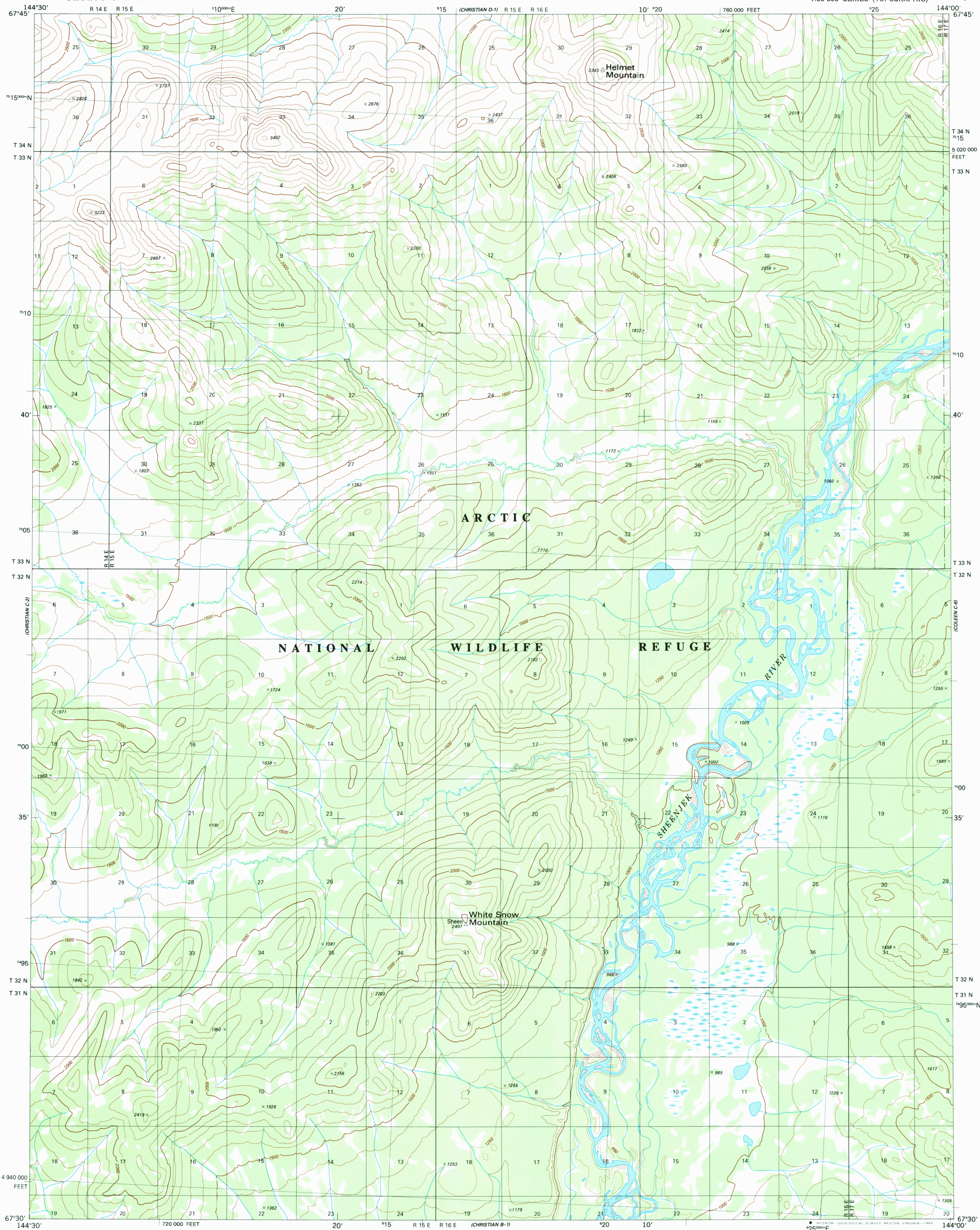


UNITED STATES
DEPARTMENT OF THE INTERIOR
GEOLOGICAL SURVEY

CHRISTIAN (C-1) QUADRANGLE
ALASKA

1:63 360 SERIES (TOPOGRAPHIC)



Mapped, edited, and published by the Geological Survey

Control by USGS and NOS/NOAA

Topography by photogrammetric methods from aerial photographs
taken 1972, field annotated 1978. Map not field checked
Map edited 1983

Projection and 5,000-meter grid,
Universal Transverse Mercator, zone 6
20,000-foot grid ticks based on Alaska coordinate
system, zone 3, 1927 North American Datum
To place on the predicted North American Datum 1983 move
the projection lines 35 meters north and 113 meters east

Land lines represent unsurveyed and unmarked locations
predetermined by the Bureau of Land Management
Folio F-1 and F-2, Fairbanks Meridian
Federal reservation boundaries established by The Alaska
National Interest Lands Conservation Act, PL-96-487, Dec. 2, 1980,
are shown as lands by the administering agencies on the Alaska
boundaries map set
There may be private inholdings within the boundaries of
the National or State reservations shown on this map

UTM GRID AND 1983 MAGNETIC NORTH
DECLINATION AT CENTER OF MAP
DIAGRAM IS APPROXIMATE



ROAD CLASSIFICATION
No roads or trails in this area

FOR SALE BY U. S. GEOLOGICAL SURVEY
FAIRBANKS, ALASKA 99701, DENVER, COLORADO 80225, OR RESTON, VIRGINIA 22092
A FOLDER DESCRIBING TOPOGRAPHIC MAPS AND SYMBOLS IS AVAILABLE ON REQUEST

CHRISTIAN (C-1), ALASKA
N6730-W14400/15X30

1983

RETURN TO:
NHD HISTORICAL MAP ARCHIVES
USGS NATIONAL CENTER, MS-522
RESTON, VA 22092

MAR 12 1984