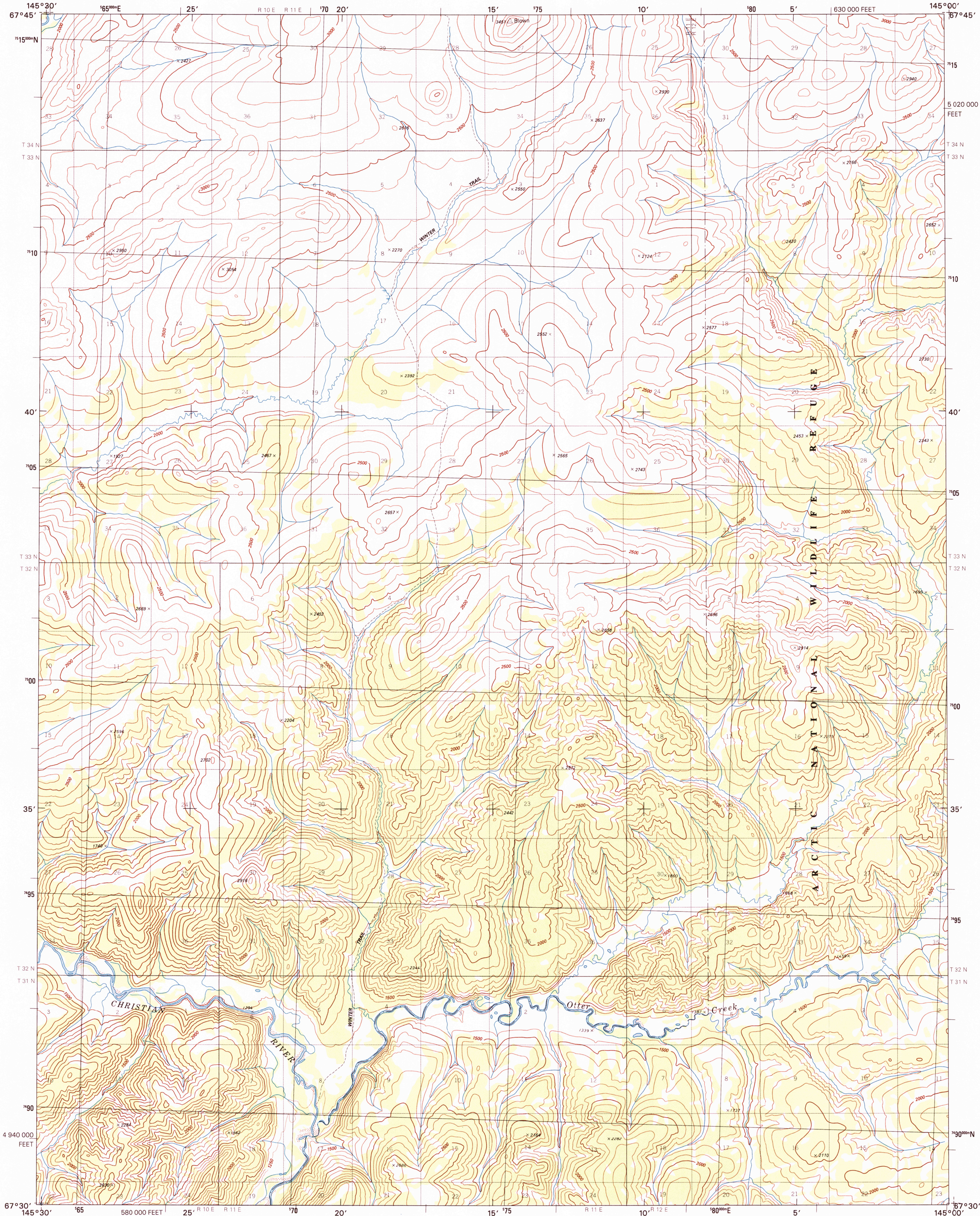




U.S. DEPARTMENT OF THE INTERIOR  
U.S. GEOLOGICAL SURVEY

CHRISTIAN C-3 QUADRANGLE  
ALASKA  
1:63 360 SERIES (TOPOGRAPHIC)



Produced by the United States Geological Survey

Topography by photogrammetric methods from imagery taken 1972. Boundaries current as 2000. This map has not been field checked

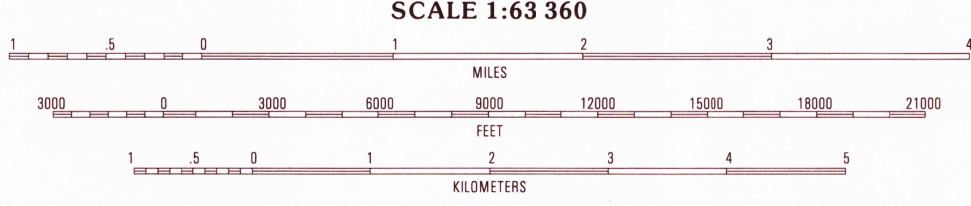
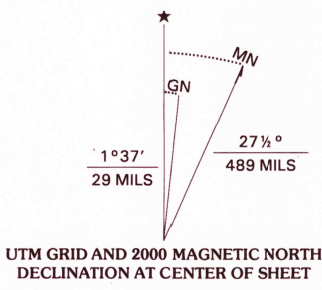
North American Datum of 1927 (NAD 27). Projection and 5 000-meter grid: Universal Transverse mercator, zone 6 10 000-foot ticks: Alaska Coordinate System of 1983 (zone 3) North American Datum of 1983 (NAD 83) is shown by dashed corner ticks. The values of the shift between NAD 27 and NAD 83 are obtainable from National Geodetic Survey NADCON software

Gray land lines represent unsurveyed and unmarked locations predetermined by the Bureau of Land Management Folio F-2, Fairbanks Meridian

There may be private inholdings within the boundaries of the National or State reservations shown on this map

Federal reservations boundaries established by the Alaska National Interest Lands Conservation Act, PL 96-487, Dec 2, 1980 are shown as compiled by the administering agencies

Swamps, as portrayed, indicate only the wetter areas, usually of low relief, as interpreted from imagery



CONTOUR INTERVAL 100 FEET  
SUPPLEMENTARY CONTOUR INTERVAL 50 FEET  
NATIONAL GEODETIC VERTICAL DATUM OF 1929  
TO CONVERT FEET TO METERS, MULTIPLY BY 0.3048



ROAD CLASSIFICATION			
Primary highway hard surface .....	Unimproved road .....		
Secondary highway hard surface .....	4 wheel drive .....		
Light-duty road, hard or improved surface .....	Trails .....		
	State Route		

1	2	3
4		5
6	7	8

1 Christian D-4  
2 Christian D-3  
3 Christian D-2  
4 Christian C-4  
5 Christian C-2  
6 Christian B-4  
7 Christian B-3  
8 Christian B-2

CHRISTIAN C-3, AK  
1972

RECEIVED

SEP 30 2000

USGS map  
HISTORICAL MAP ARCHIVES



FOR SALE BY U.S. GEOLOGICAL SURVEY, P.O. BOX 25286, DENVER, COLORADO 80225  
A FOLDER DESCRIBING TOPOGRAPHIC MAPS AND SYMBOLS IS AVAILABLE ON REQUEST