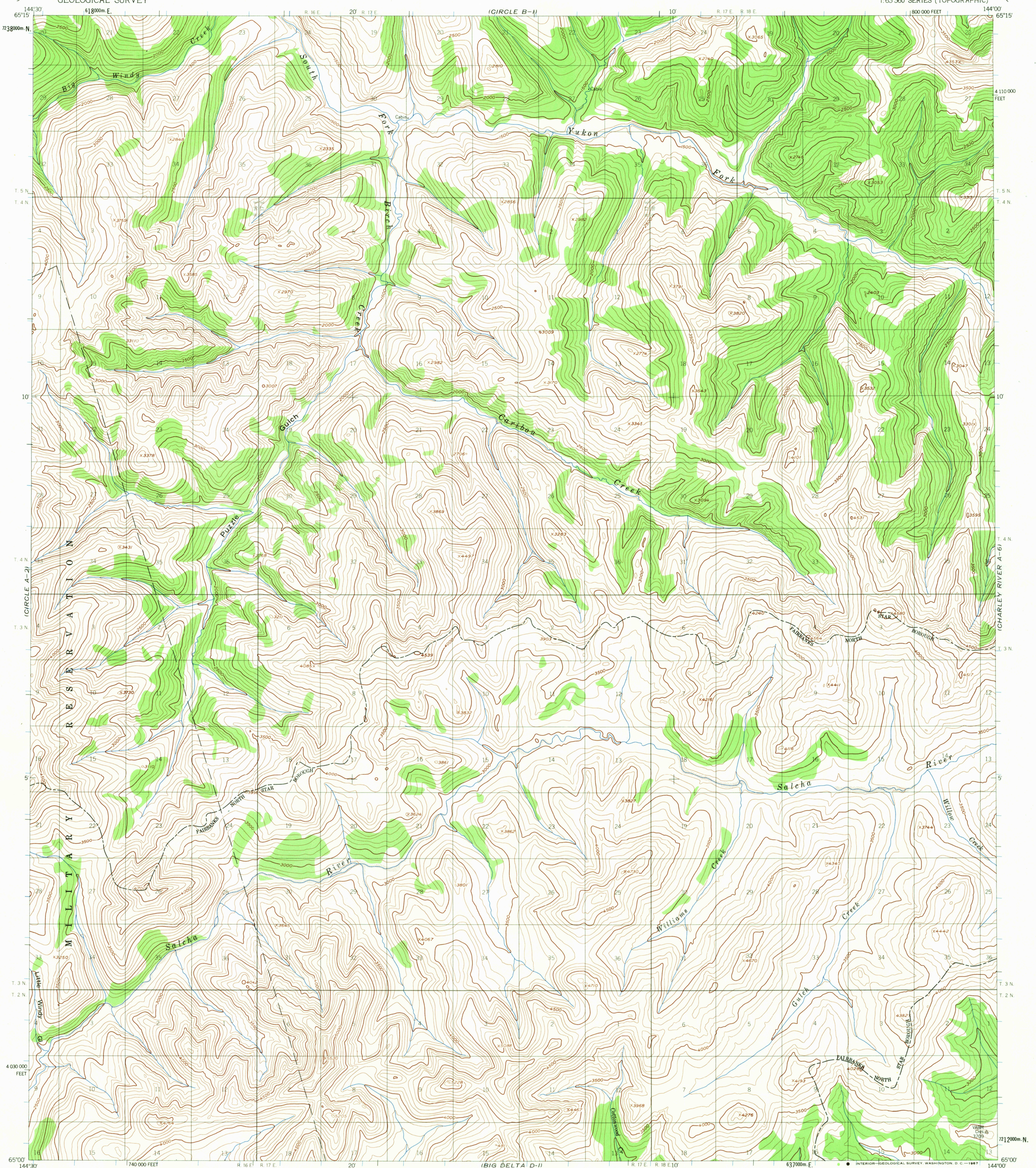


(CIRCLE B-2)

UNITED STATES
DEPARTMENT OF THE INTERIOR
GEOLOGICAL SURVEY

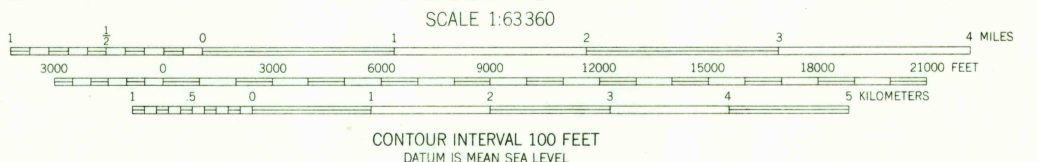
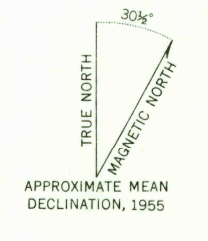
CIRCLE (A-1) QUADRANGLE
ALASKA
1:63 360 SERIES (TOPOGRAPHIC)

(CHARLEY RIVER B-6)



(BIG DELTA D-2)

Mapped, edited, and published by the Geological Survey
Control by USGS
Topography by photogrammetric methods from aerial photographs taken
1951, 1953, 1954, and 1955, field annotated 1955. Map not field checked
Universal Transverse Mercator projection. 1927 North American datum
10,000-foot grid based on Alaska coordinate system, zone 3
1000-meter Universal Transverse Mercator grid ticks,
zone 6, shown in blue
Land lines represent unsurveyed and unmarked locations
predetermined by the Bureau of Land Management
Folios F-7, and F-8, Fairbanks Meridian



USGS
Historical File
Topographic Division
ROAD CLASSIFICATION
No roads or trails in this area
U.S.G.S.
FILE COPY
TOPOGRAPHIC DIVISION
CIRCLE (A-1), ALASKA
N6500-W14400/15X30
1955
MINOR REVISIONS 1966

(EAGLE D-6)

FOR SALE BY U.S. GEOLOGICAL SURVEY
FAIRBANKS, ALASKA 99701, DENVER, COLORADO 80225, OR WASHINGTON, D. C. 20242
A FOLDER DESCRIBING TOPOGRAPHIC MAPS AND SYMBOLS IS AVAILABLE ON REQUEST

2745
DEC 18 1967