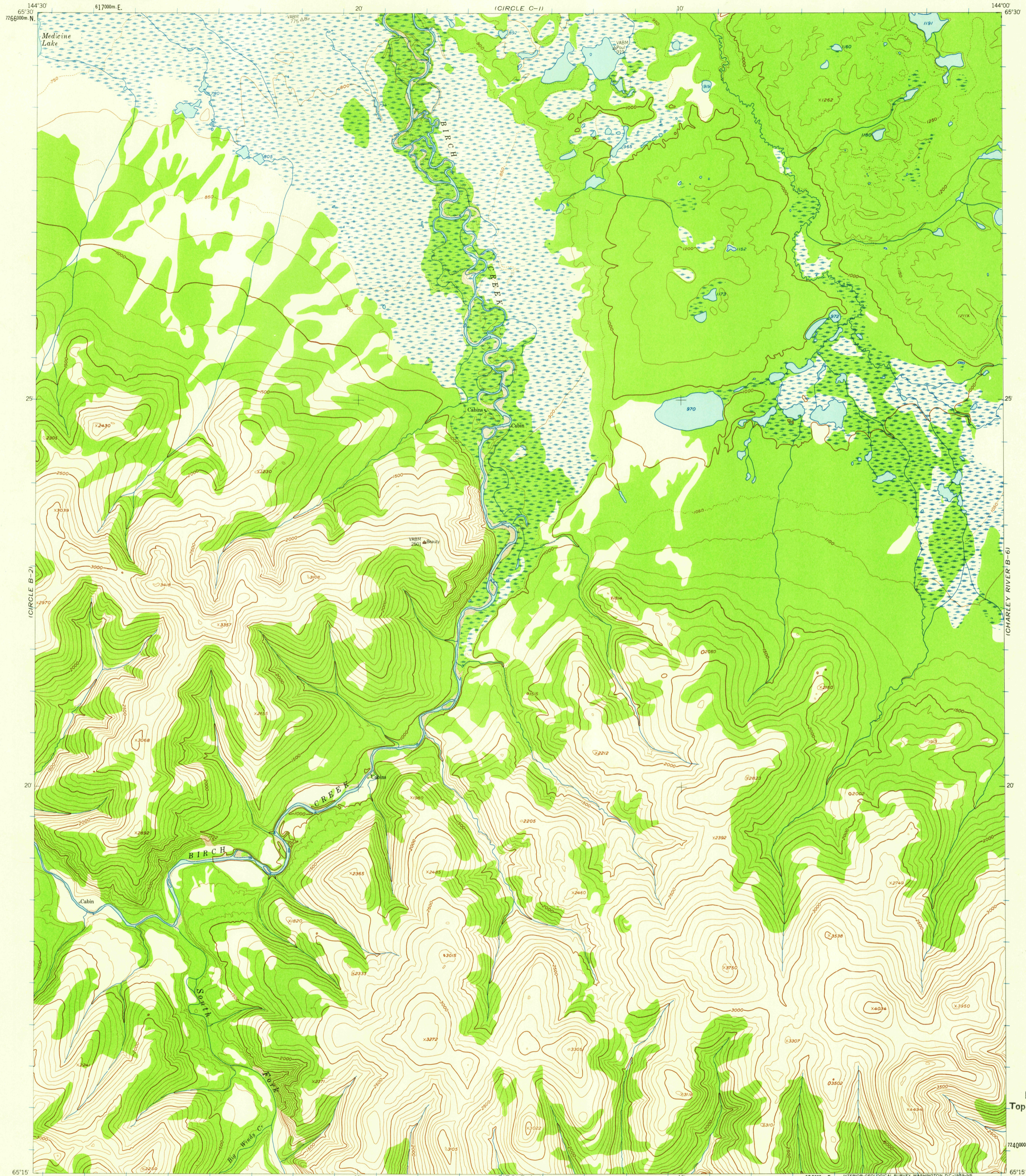


(CIRCLE C-2)

UNITED STATES
DEPARTMENT OF THE INTERIOR
GEOLOGICAL SURVEY

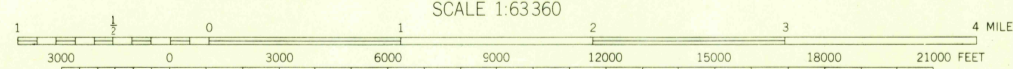
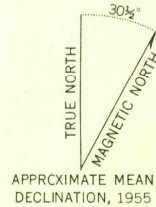
CIRCLE (B-1) QUADRANGLE
ALASKA
1:63 360 SERIES (TOPOGRAPHIC)

(CHARLEY RIVER C-6)



(CIRCLE A-2)

Mapped, edited, and published by the Geological Survey
Control by USGS and USC&GS
Topography from aerial photographs by photogrammetric
methods: 1957. Aerial photographs taken 1951, 1953,
and 1954, field annotated 1955. Map not field checked
Universal Transverse Mercator projection
1927 North American datum
1000-meter Universal Transverse Mercator grid ticks,
zone 6, shown in blue
Unchecked elevations are shown in brown and blue



CONTOUR INTERVAL 100 FEET
DASHED LINES REPRESENT 50-FOOT CONTOURS
DATUM IS MEAN SEA LEVEL

FOR SALE BY U.S. GEOLOGICAL SURVEY
FAIRBANKS, ALASKA DENVER 2, COLORADO WASHINGTON 25, D.C.
A FOLDER DESCRIBING TOPOGRAPHIC MAPS AND SYMBOLS IS AVAILABLE ON REQUEST

USGS
Historical File
Topographic Division

JUN 3 - 1959

7240000m. N.
65°15'

144°00'

ROAD CLASSIFICATION
No roads or trails in this area

U.S.G.S.
FILE COPY
TOPOGRAPHIC DIVISION



CIRCLE (B-1), ALASKA
N6515-W14400/15X30
1955

2005