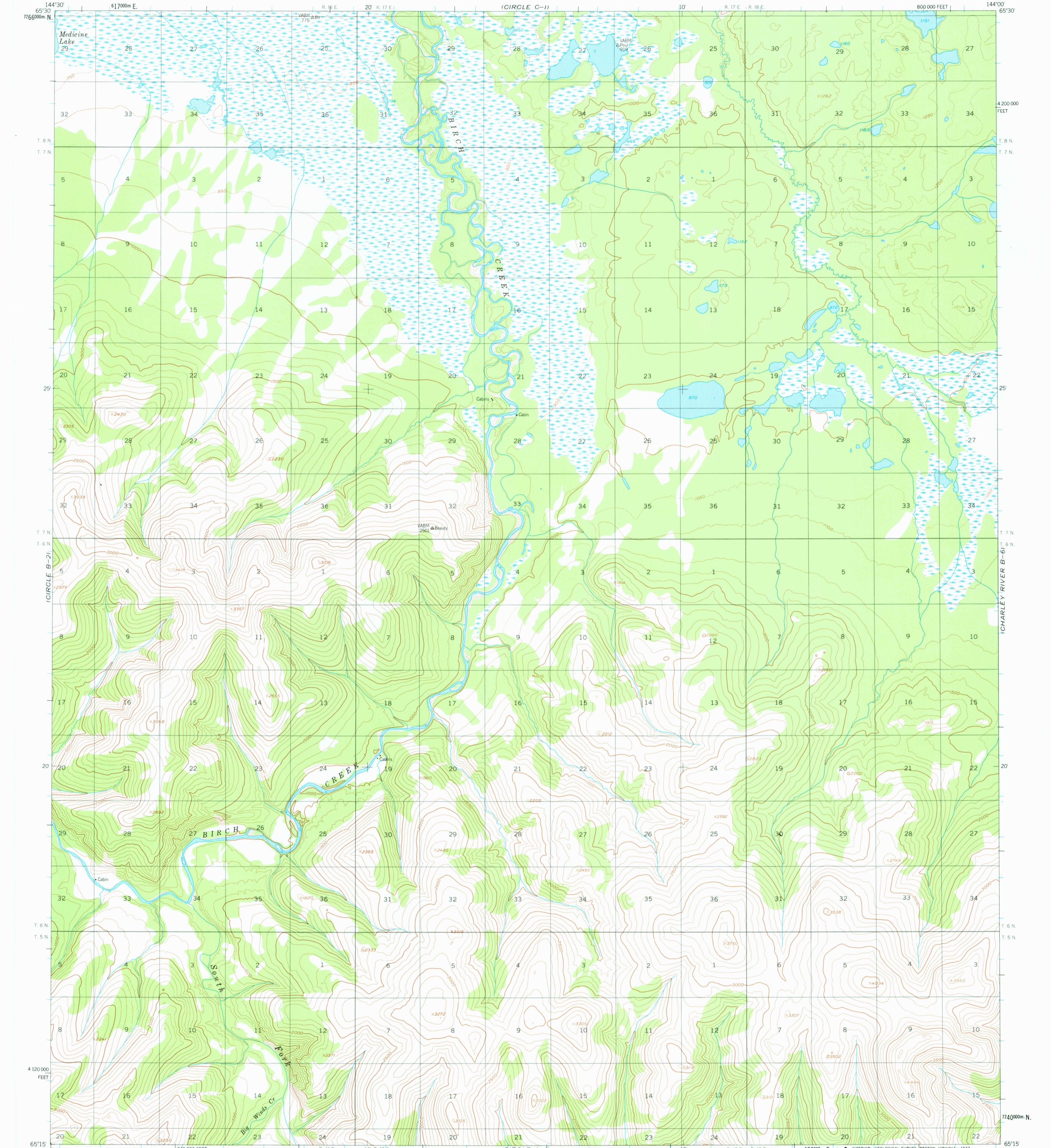
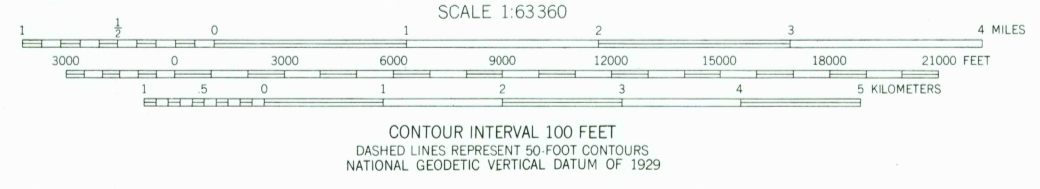
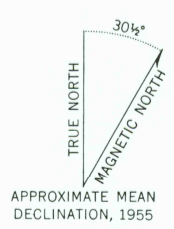


UNITED STATES  
DEPARTMENT OF THE INTERIOR  
GEOLOGICAL SURVEY

CIRCLE (B-1) QUADRANGLE  
ALASKA  
1:63 360 SERIES (TOPOGRAPHIC)



Maped, edited, and published by the Geological Survey  
Control by USGS and USC&GS  
Topography by photogrammetric methods from aerial photographs taken 1951, 1953, and 1954, field annotated 1955. Map not field checked  
Universal Transverse Mercator projection, 1927 North American datum, 10,000-foot grid based on Alaska coordinate system, zone 3  
1000-meter Universal Transverse Mercator grid ticks, zone 6, shown in blue  
Land lines represent unsurveyed and unmarked locations predetermined by the Bureau of Land Management  
Folios F-7, and F-8, Fairbanks Meridian  
Swamps, as portrayed, indicate only the wetter areas, usually of low relief, as interpreted from aerial photographs



FOR SALE BY U.S. GEOLOGICAL SURVEY  
FAIRBANKS, ALASKA 99701, DENVER, COLORADO 80225 OR RESTON, VIRGINIA 22092  
A FOLDER DESCRIBING TOPOGRAPHIC MAPS AND SYMBOLS IS AVAILABLE ON REQUEST

CIRCLE (B-1), ALASKA  
N6515-W14400/15X30  
1955  
MINOR REVISIONS 1968

FEB 14 1978

USGS  
Historical File  
Topographic Division

2300