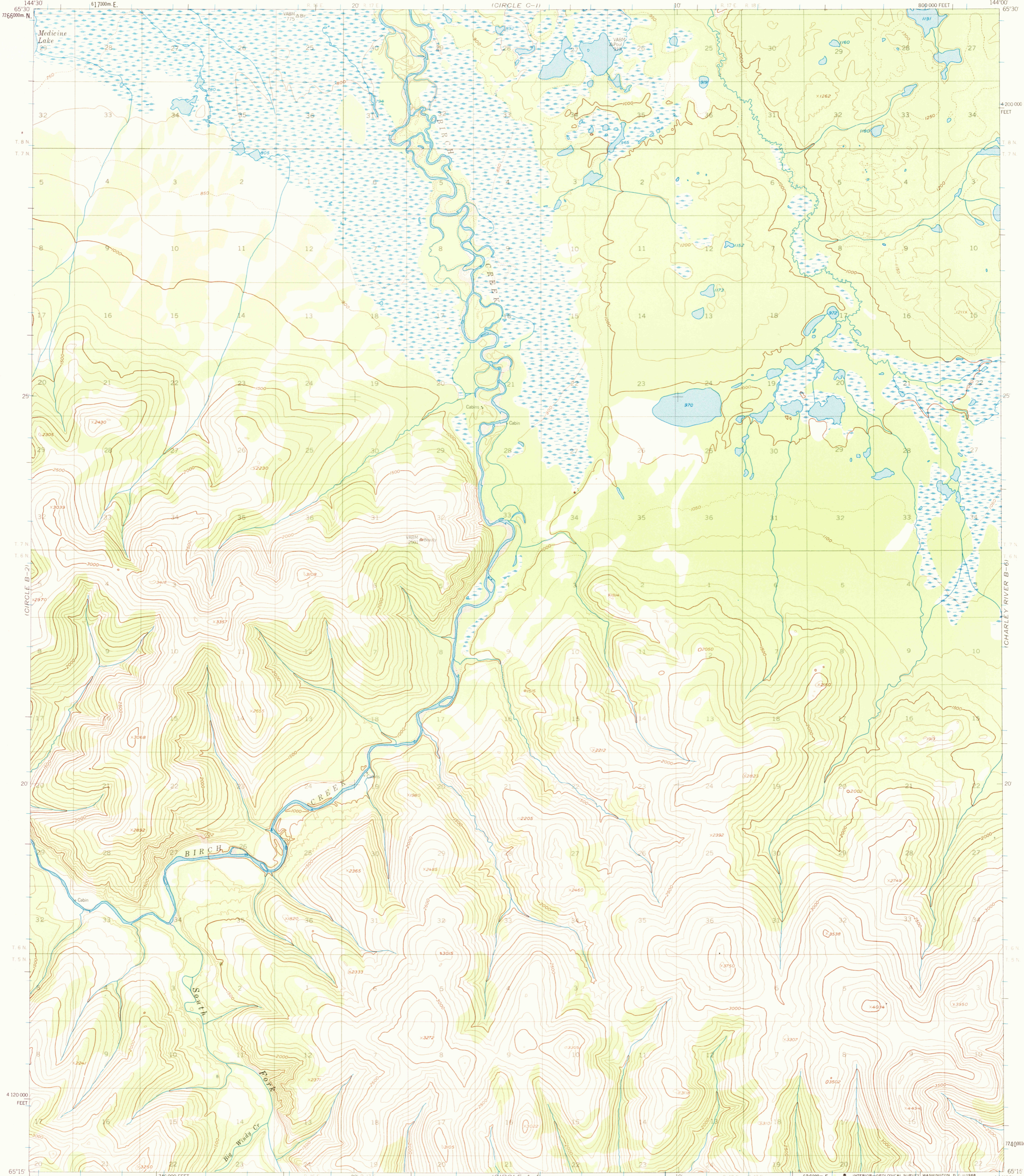


(CIRCLE C-2)

(CHARLEY RIVER C-6)



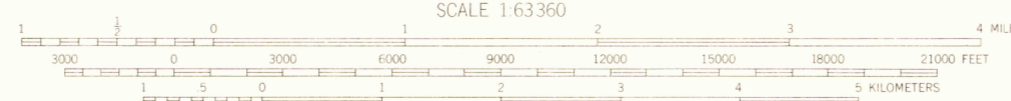
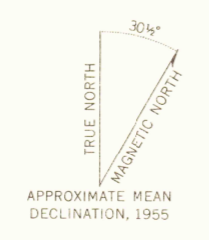
Maped, edited, and published by the Geological Survey  
Control by USGS and USC&GS

Topography by photogrammetric methods from aerial photographs  
taken 1951, 1953, and 1954, field annotated 1955. Map not field checked

Universal Transverse Mercator projection 1927 North American datum  
10,000-foot grid based on Alaska coordinate system, zone 3  
1000-meter Universal Transverse Mercator grid ticks,  
zone 6, shown in blue

Land lines represent unsurveyed and unmarked locations  
predetermined by the Bureau of Land Management  
Folios F-7, and F-8, Fairbanks Meridian

Swamps, as portrayed, indicate only the wetter areas,  
usually of low relief, as interpreted from aerial photographs



CONTOUR INTERVAL 100 FEET  
DASHED LINES REPRESENT 50 FOOT CONTOURS  
DATUM IS MEAN SEA LEVEL



FOR SALE BY U.S. GEOLOGICAL SURVEY  
FAIRBANKS, ALASKA 99701, DENVER, COLORADO 80225, OR WASHINGTON, D.C. 20242  
A FOLDER DESCRIBING TOPOGRAPHIC MAPS AND SYMBOLS IS AVAILABLE ON REQUEST

ROAD CLASSIFICATION  
No roads or trails in this area

CIRCLE (B-1), ALASKA  
N6515-W14400/15X30  
1955  
MINOR REVISIONS 1968

(CIRCLE A-2)

(CHARLEY RIVER A-6)