

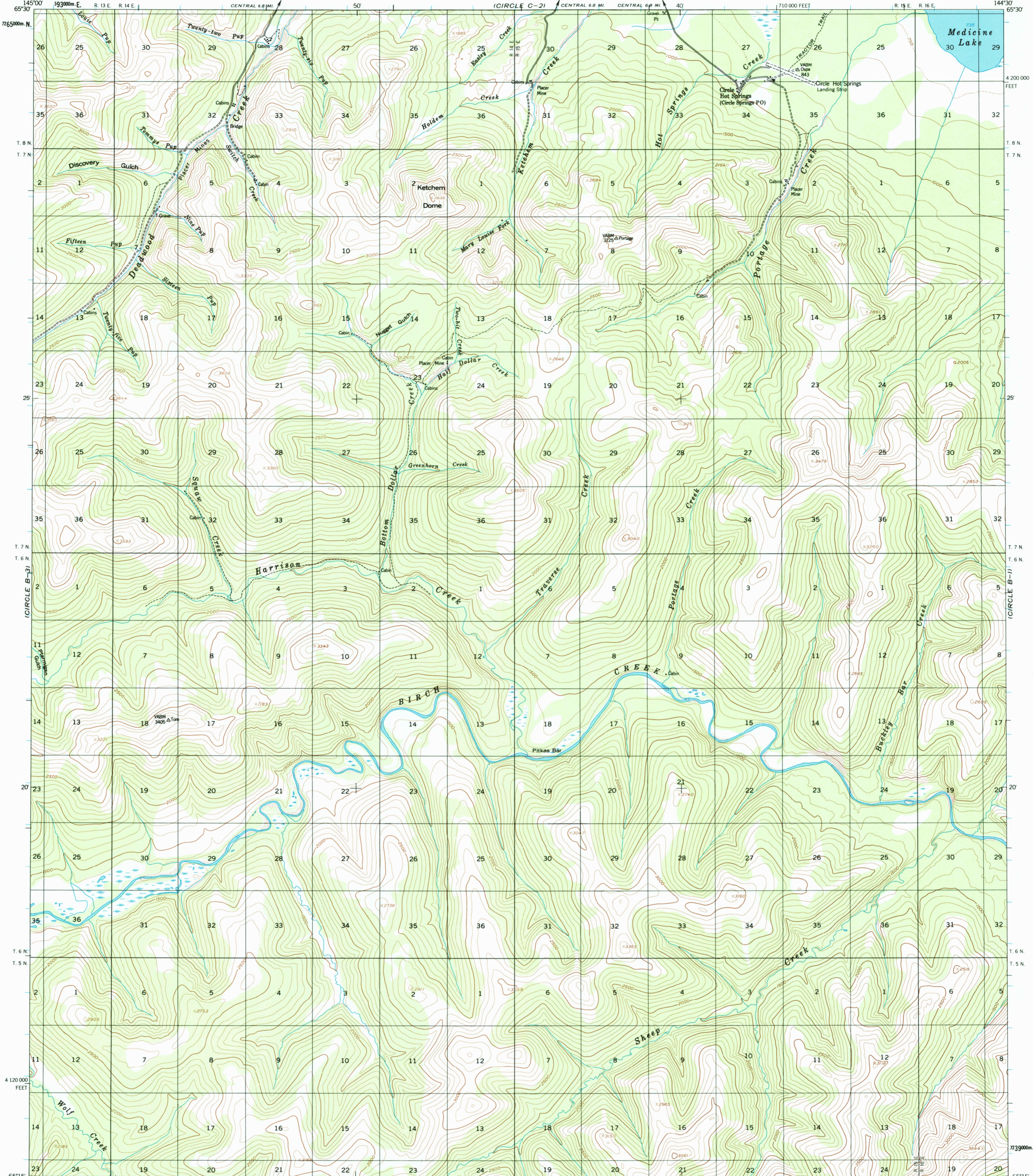
(CIRCLE C-3)



U.S. DEPARTMENT OF THE INTERIOR
U.S. GEOLOGICAL SURVEY

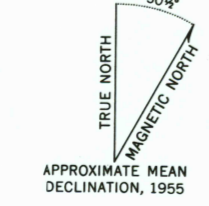
CIRCLE (B-2) QUADRANGLE
ALASKA
1:63 360 SERIES (TOPOGRAPHIC)

(CIRCLE C-1)

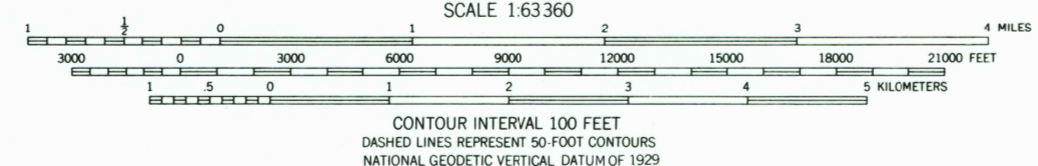


(CIRCLE A-3)

Mapped, edited, and published by the Geological Survey
Control by USGS and USC&GS
Topography by photogrammetric methods from aerial photographs taken 1951, 1953, and 1955, field annotated 1955. Map not field checked
Universal Transverse Mercator projection. 1927 North American datum
10,000-foot grid based on Alaska coordinate system, zone 3
1000-meter Universal Transverse Mercator grid ticks, zone 5, shown in blue
Land lines represent unsurveyed and unmarked locations predetermined by the Bureau of Land Management Folio F-7, Fairbanks Meridian
Swamps, as portrayed, indicate only the wetter areas, usually of low relief, as interpreted from aerial photographs



APPROXIMATE MEAN DECLINATION, 1955
20% TOTAL RECOVERED FIBER



ROAD CLASSIFICATION
Light-duty ——— Unimproved dirt - - - - -



CIRCLE (B-2), ALASKA
N6515-W14430/15X30
1955
MINOR REVISIONS 1971

FOR SALE BY U.S. GEOLOGICAL SURVEY, P.O. BOX 25286, DENVER, COLORADO 80225
A FOLDER DESCRIBING TOPOGRAPHIC MAPS AND SYMBOLS IS AVAILABLE ON REQUEST

RECEIVED
AUG 31 2002

USGS/IFMID
HISTORICAL MAP ARCHIVES

