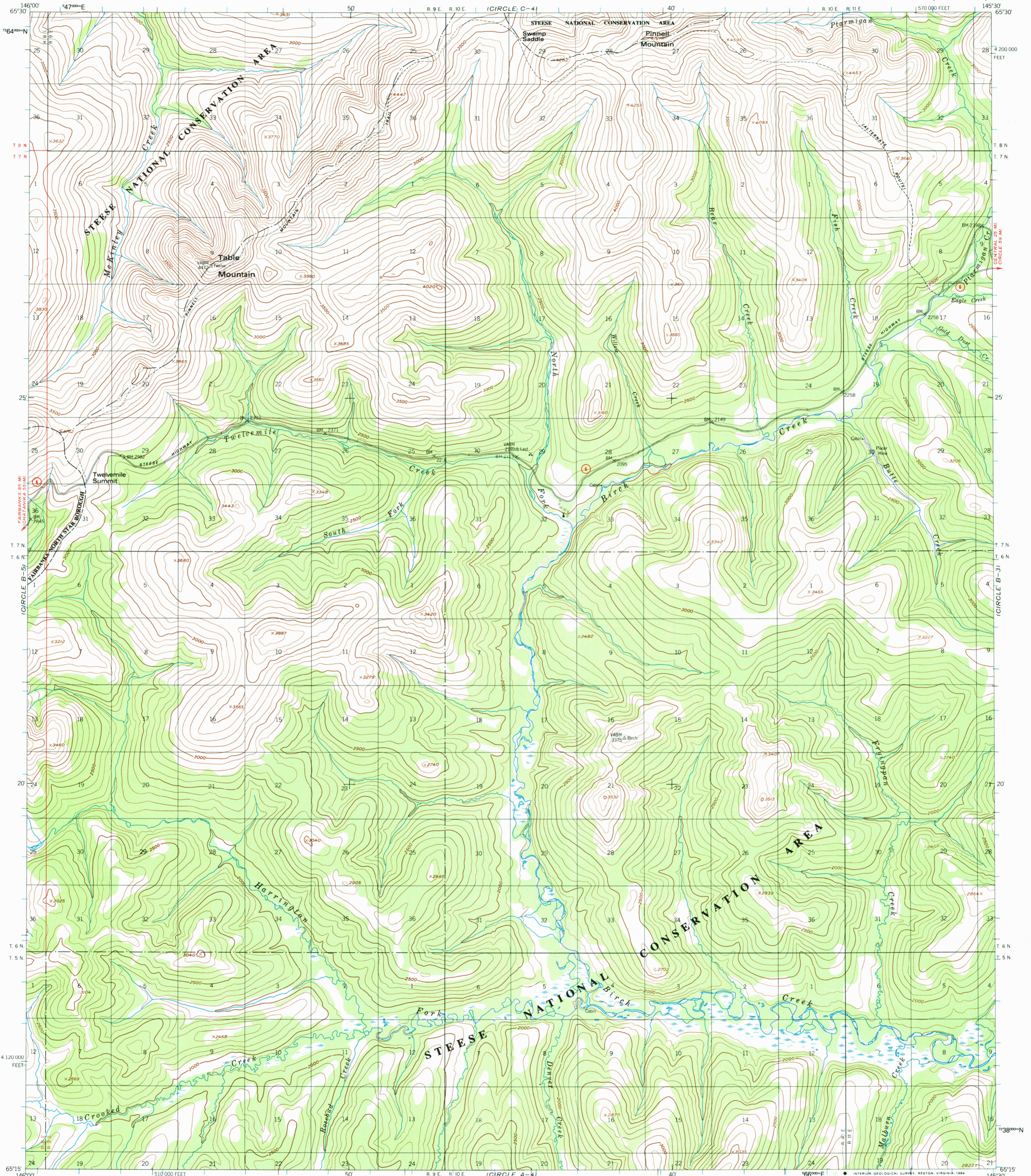


CIRCLE C-5)

UNITED STATES
DEPARTMENT OF THE INTERIOR
GEOLOGICAL SURVEY

CIRCLE (B-4) QUADRANGLE
ALASKA
1:63 360 SERIES (TOPOGRAPHIC)

CIRCLE C-3)



CIRCLE A-5)

Mapped, edited, and published by the Geological Survey
Control by USGS and NOS/NOAA

Topography by photogrammetric methods from aerial photographs
taken 1951; field annotated 1952. Map not field checked

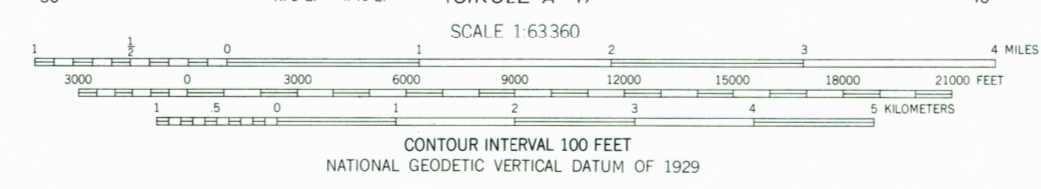
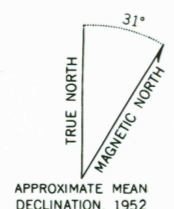
Projection and 1000-meter grid ticks shown in blue:
Universal Transverse Mercator, zone 6
10,000-foot grid ticks based on Alaska coordinate
system, zone 3, 1927 North American Datum
To place on the predicted North American Datum 1983 move
the projection lines 45 meters north and 115 meters east

Gray land lines represent unsurveyed and unmarked locations
pre-determined by the Bureau of Land Management
Folio F-7, Fairbanks Meridian

Swamps, as portrayed, indicate only the wetter areas,
usually of low relief, as interpreted from aerial photographs

Federal reservation boundaries established by the Alaska National
Interest Lands Conservation Act, PL 96-487, Dec. 2, 1980 are
shown as compiled by the administering agencies

There may be private inholdings within the boundaries of
the National or State reservations shown on this map



ROAD CLASSIFICATION

Light-duty ————— Unimproved dirt - - - - -

State Route ○

CIRCLE (B-4), ALASKA
N6155-W14530/15X30
1952
MINOR REVISION 1984

FOR SALE BY U. S. GEOLOGICAL SURVEY
FAIRBANKS, ALASKA 99701, DENVER, COLORADO 80225, OR RESTON, VIRGINIA 22092
A FOLDER DESCRIBING TOPOGRAPHIC MAPS AND SYMBOLS IS AVAILABLE ON REQUEST

RETURN TO:
NHD HISTORICAL MAP ARCHIVES
USGS NATIONAL CENTER, MS-522
RESTON, VA 22092

CIRCLE A-3)