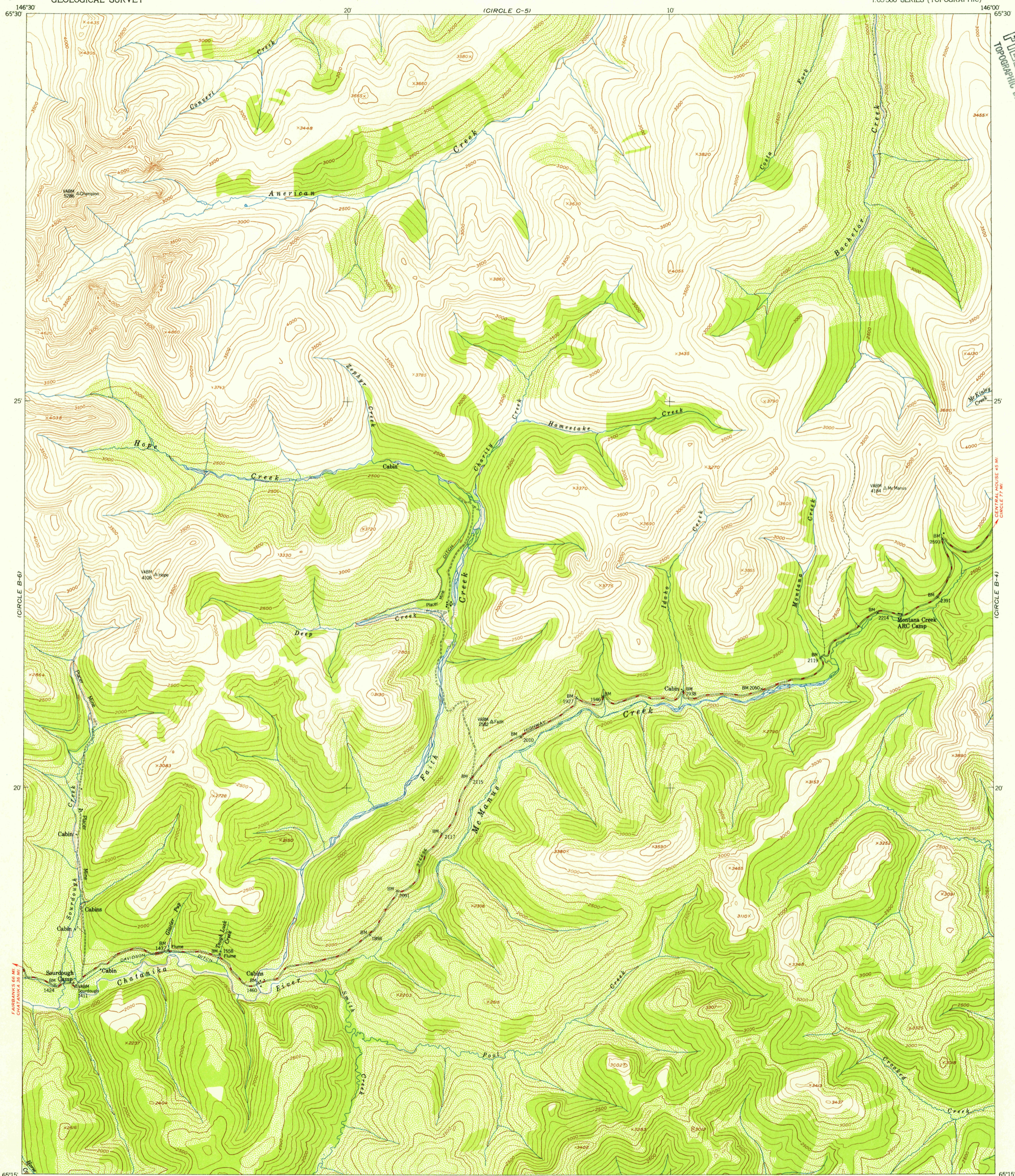
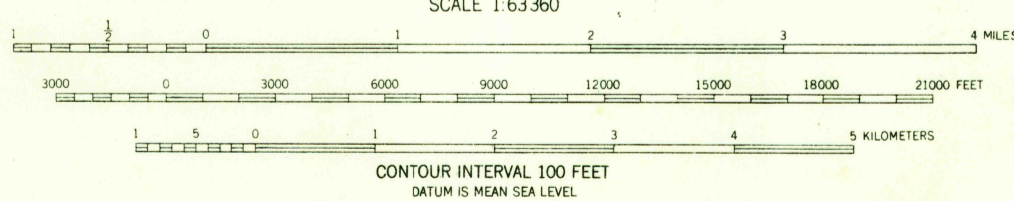
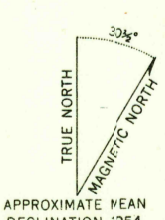


U.S.G.S.
FILE COPY
TOPOGRAPHIC DIVISION



Mapped, edited, and published by the Geological Survey
Control by USGS and USC&GS
Topography from aerial photographs by multiplex methods 1954
Aerial photographs taken 1951
Universal Transverse Mercator projection, zone 6
1927 North American datum
Unchecked elevations are shown in brown



ROAD CLASSIFICATION

ALL WEATHER ROADS	DRY WEATHER ROADS
Hard-surface	None Improved dirt None
Other	None Unimproved dirt
	Trails

FOR SALE BY U.S. GEOLOGICAL SURVEY
FAIRBANKS, ALASKA FEDERAL CENTER, DENVER, COLORADO WASHINGTON 25, D. C.
A FOLDER DESCRIBING TOPOGRAPHIC MAPS AND SYMBOLS IS AVAILABLE ON REQUEST

U.S.G.S.
FILE COPY
TOPOGRAPHIC DIVISION
CIRCLE (B-5), ALASKA
N6515-W14600/15X30
1954
USGS
Historical File
Topographic Division

AUG 16 1955
2110