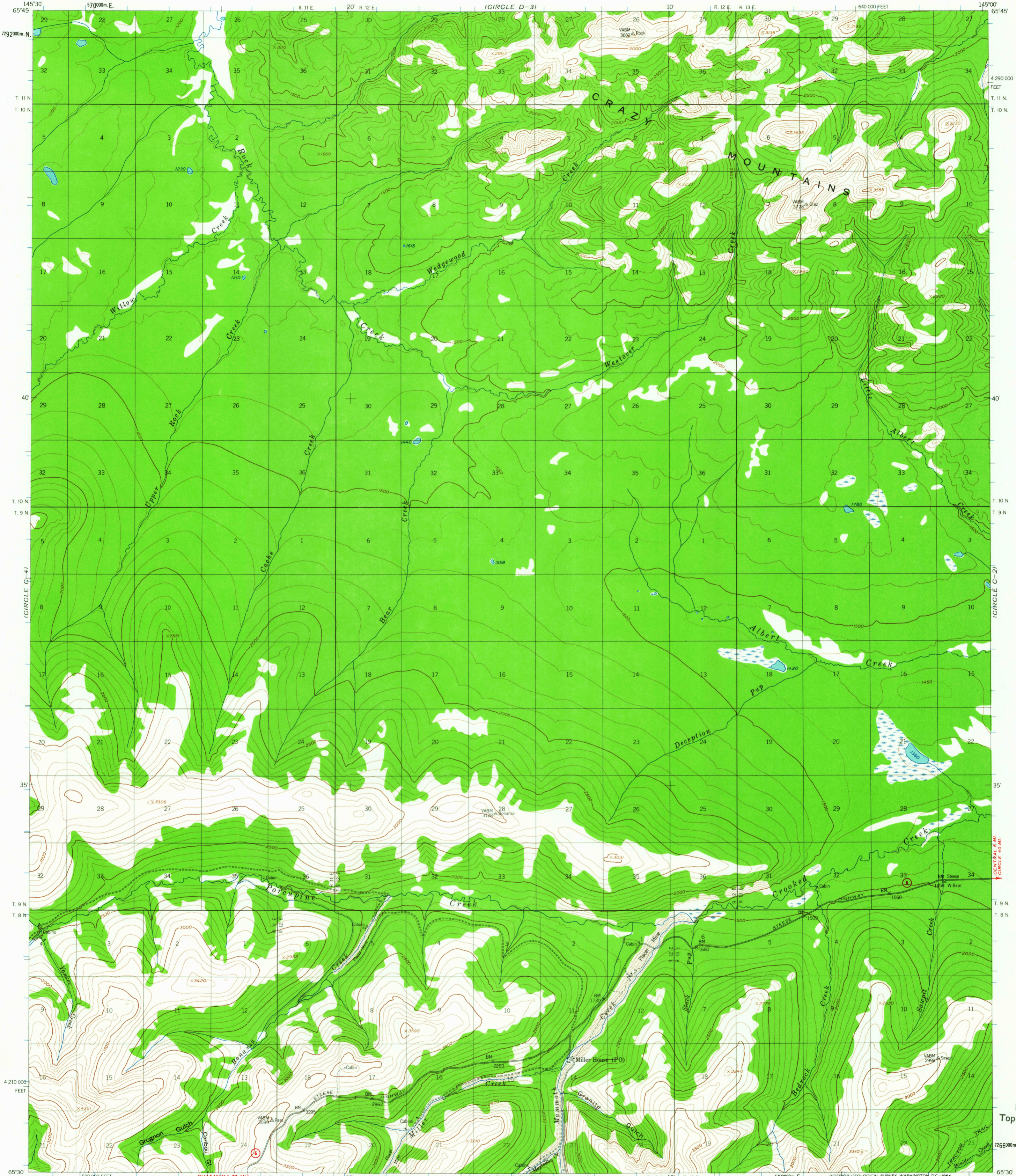


(CIRCLE D-4)

UNITED STATES  
DEPARTMENT OF THE INTERIOR  
GEOLOGICAL SURVEY

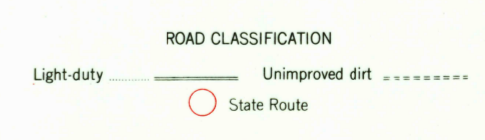
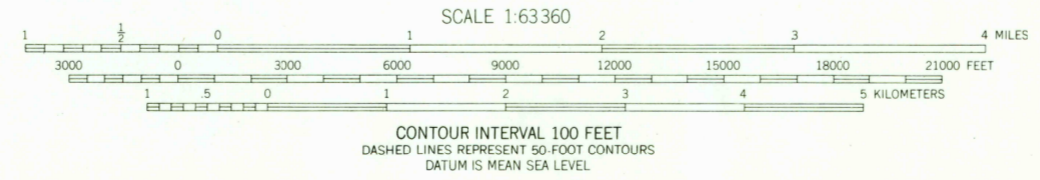
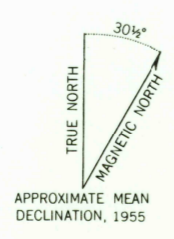
CIRCLE (C-3) QUADRANGLE  
ALASKA  
1:63360 SERIES (TOPOGRAPHIC)

(CIRCLE D-2)



(CIRCLE B-4)

Mapped, edited, and published by the Geological Survey  
Control by USGS and USC&GS  
Topography by photogrammetric methods from aerial photographs taken 1951 and 1953, field annotated 1955. Map not field checked  
Universal Transverse Mercator projection, 1927 North American Datum 10,000-foot grid based on Alaska coordinate system, zone 3 1000-meter Universal Transverse Mercator grid ticks, zone 6, shown in blue  
Lanc lines represent unsurveyed and unmarked locations predetermined by the Bureau of Land Management Folio F-7, Fairbanks Meridian  
Swamps, as portrayed, indicate only the wetter areas, usually of low relief, as interpreted from aerial photographs



FOR SALE BY U.S. GEOLOGICAL SURVEY  
FAIRBANKS, ALASKA DENVER 25, COLORADO WASHINGTON 25, D. C.  
A FOLDER DESCRIBING TOPOGRAPHIC MAPS AND SYMBOLS IS AVAILABLE ON REQUEST

U.S.G.S.  
FILE COPY  
TOPOGRAPHIC DIVISION

CIRCLE (C-3), ALASKA  
N6530-W14500/15X30  
1955  
MINOR REVISIONS 1963

USGS  
Historical File  
Topographic Division

(CIRCLE B-2)

2975  
MAY 18 1964